



SZABO SCANDIC

Part of Europa Biosite

Produktinformation



Forschungsprodukte & Biochemikalien



Zellkultur & Verbrauchsmaterial



Diagnostik & molekulare Diagnostik



Laborgeräte & Service

Weitere Information auf den folgenden Seiten!
See the following pages for more information!



Lieferung & Zahlungsart

siehe unsere [Liefer- und Versandbedingungen](#)

Zuschläge

- Mindermengenzuschlag
- Trockeneiszuschlag
- Gefahrgutzuschlag
- Expressversand

SZABO-SCANDIC HandelsgmbH

Quellenstraße 110, A-1100 Wien

T. +43(0)1 489 3961-0

F. +43(0)1 489 3961-7

mail@szabo-scandic.com

www.szabo-scandic.com

[linkedin.com/company/szaboscandic](https://www.linkedin.com/company/szaboscandic) 

Rabbit anti-ATP1A1 / Na⁺ K⁺ ATPase alpha 1 antibody, clone SQab1875 (monoclonal)

Clone no. SQab1875

MONOSAN

Product name	Rabbit anti-ATP1A1 / Na ⁺ K ⁺ ATPase alpha 1 antibody, clone SQab1875 (monoclonal)
Host	Rabbit
Applications	FC, IHC-P, IP, WB
Species reactivity	Human, Mouse, Rat, African green monkey, Bovine, Chicken, Dog, Pig
Conjugate	-
Immunogen	Synthetic peptide around the N-terminus of Human ATP1A1 / Na ⁺ K ⁺ ATPase alpha 1.
Isotype	-
Clonality	Monoclonal
Clone number	SQab1875
Size	100 ul
Concentration	n/a
Format	Purification with Protein A.
Storage buffer	PBS, 0.01% Sodium azide, 40% Glycerol and 0.05% BSA.
Storage until expiry date	-20°C

FOR RESEARCH USE ONLY. NOT FOR USE IN DIAGNOSTIC PROCEDURES

Rabbit anti-ATP1A1 / Na⁺ K⁺ ATPase alpha 1 antibody, clone SQab1875 (monoclonal)

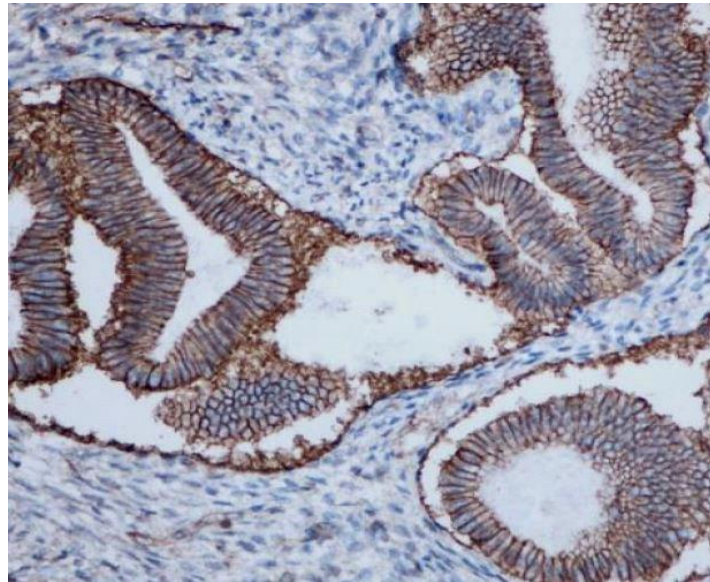
Clone no. SQab1875

MONOSAN

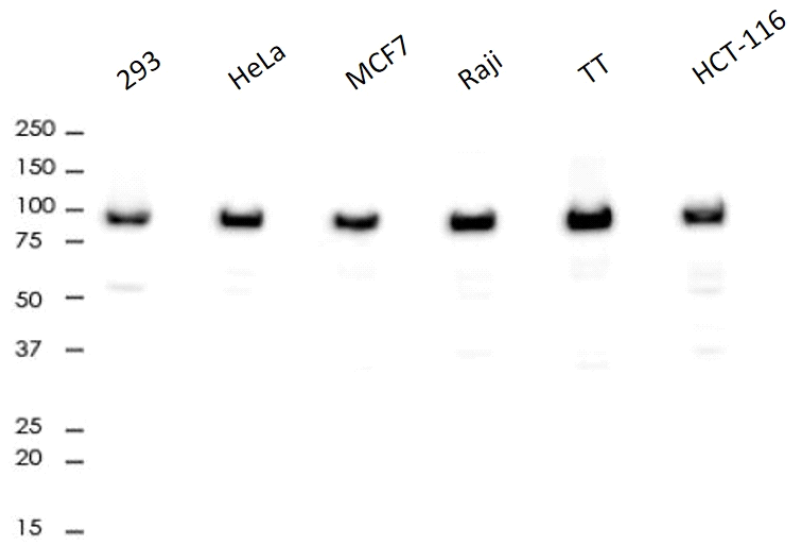
Additional info

Application note: IHC-P: Antigen Retrieval: Heat mediated was performed using Tris/EDTA buffer pH 9.0.* The dilutions indicate recommended starting dilutions and the optimal dilutions or concentrations should be determined by the scientist. Storage instruction: For continuous use, store undiluted antibody at 2-8°C for up to a week. For long-term storage, aliquot and store at -20°C. Storage in frost free freezers is not recommended. Avoid repeated freeze/thaw cycles. Suggest spin the vial prior to opening. The antibody solution should be gently mixed before use. Background: ATP1A protein belongs to the family of P-type cation transport ATPases, and to the subfamily of Na⁺/K⁺ -ATPases. Na⁺/K⁺ -ATPase is an integral membrane protein responsible for establishing and maintaining the electrochemical gradients of Na and K ions across the plasma membrane. These gradients are essential for osmoregulation, for sodium-coupled transport of a variety of organic and inorganic molecules, and for electrical excitability of nerve and muscle. This enzyme is composed of two subunits, a large catalytic subunit (alpha) and a smaller glycoprotein subunit (beta). The catalytic subunit of Na⁺/K⁺ -ATPase is encoded by multiple genes. This gene encodes an alpha 1 subunit. Multiple transcript variants encoding different isoforms have been found for this gene. [provided by RefSeq, May 2009]

Images



Immunohistochemistry: Formalin-fixed and paraffin-embedded endometrium tissue stained with anti-ATP1A1 / Na+ K+ ATPase alpha 1 antibody [SQab1875] at 1:10,000 dilution. Antigen Retrieval: Heat mediated was performed using Tris/EDTA buffer pH 9.0.



Western blot: 10 µg of 293, HeLa, MCF7, Raji, TT and HCT-116 cell lysates stained with anti-ATP1A1 / Na+ K+ ATPase alpha 1 antibody [SQab1875] at 1:2000 dilution.

References

- 1. -
- 2. -
- 3. -
- 4. -
- 5. -

FOR RESEARCH USE ONLY. NOT FOR USE IN DIAGNOSTIC PROCEDURES