



SZABO SCANDIC

Part of Europa Biosite

Produktinformation



Forschungsprodukte & Biochemikalien



Zellkultur & Verbrauchsmaterial



Diagnostik & molekulare Diagnostik



Laborgeräte & Service

Weitere Information auf den folgenden Seiten!
See the following pages for more information!



Lieferung & Zahlungsart

siehe unsere [Liefer- und Versandbedingungen](#)

Zuschläge

- Mindermengenzuschlag
- Trockeneiszuschlag
- Gefahrgutzuschlag
- Expressversand

SZABO-SCANDIC HandelsgmbH

Quellenstraße 110, A-1100 Wien

T. +43(0)1 489 3961-0

F. +43(0)1 489 3961-7

mail@szabo-scandic.com

www.szabo-scandic.com

[linkedin.com/company/szaboscandic](https://www.linkedin.com/company/szaboscandic) 

Rabbit anti-CREB antibody, clone SQab1877 (monoclonal)

Clone no. SQab1877

MONOSAN

Product name	Rabbit anti-CREB antibody, clone SQab1877 (monoclonal)
Host	Rabbit
Applications	FC, ICC/IF, IHC-P, IP, WB
Species reactivity	Human
Conjugate	-
Immunogen	Synthetic peptide corresponding to aa. 200-300 of Human CREB.
Isotype	-
Clonality	Monoclonal
Clone number	SQab1877
Size	100 ul
Concentration	n/a
Format	Purification with Protein A.
Storage buffer	PBS, 0.01% Sodium azide, 40% Glycerol and 0.05% BSA.
Storage until expiry date	-20°C

FOR RESEARCH USE ONLY. NOT FOR USE IN DIAGNOSTIC PROCEDURES

Rabbit anti-CREB antibody, clone SQab1877 (monoclonal)

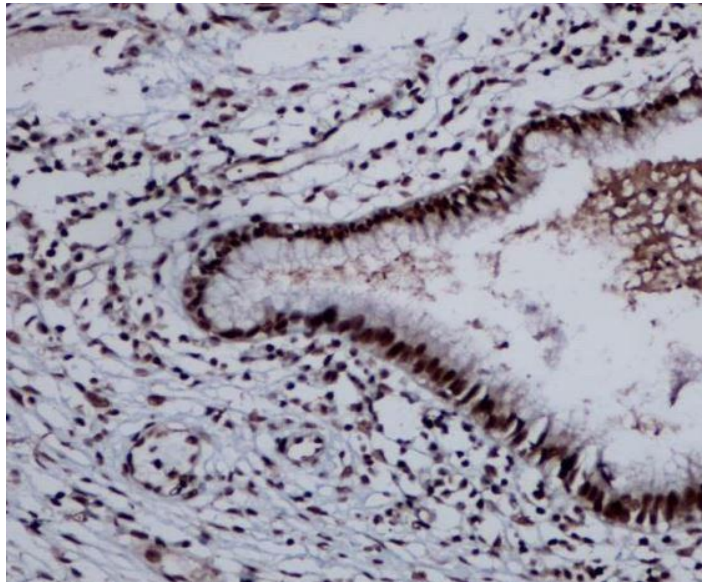
Clone no. SQab1877

MONOSAN

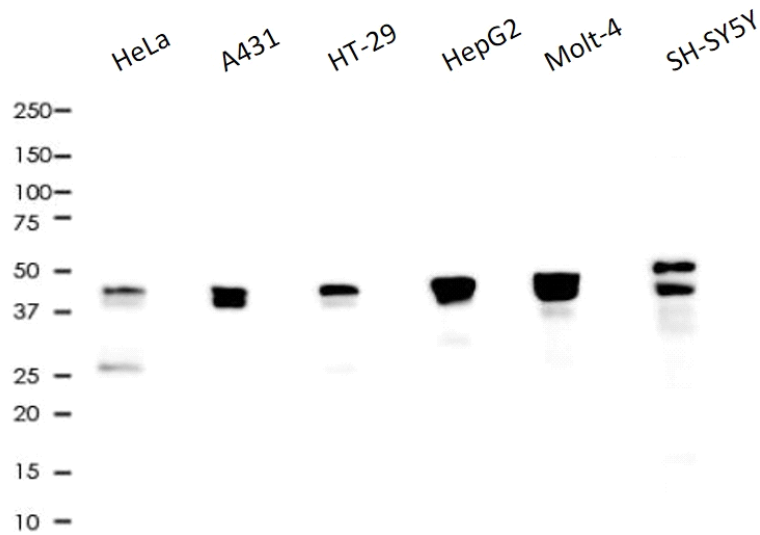
Additional info

Application note: IHC-P: Antigen Retrieval: Heat mediated was performed using Tris/EDTA buffer pH 9.0.* The dilutions indicate recommended starting dilutions and the optimal dilutions or concentrations should be determined by the scientist. Storage instruction: For continuous use, store undiluted antibody at 2-8°C for up to a week. For long-term storage, aliquot and store at -20°C. Storage in frost free freezers is not recommended. Avoid repeated freeze/thaw cycles. Suggest spin the vial prior to opening. The antibody solution should be gently mixed before use. Background: CREB is a transcription factor. It is a member of the leucine zipper family of DNA binding proteins. This protein binds as a homodimer to the cAMP-responsive element, an octameric palindrome. The protein is phosphorylated by several protein kinases, and induces transcription of genes in response to hormonal stimulation of the cAMP pathway. Alternate splicing of this gene results in several transcript variants encoding different isoforms. [provided by RefSeq, Mar 2016]

Images



Immunohistochemistry: Formalin-fixed and paraffin-embedded cervix uteri tissue stained with anti-CREB antibody [SQab1877] at 1:12,000 dilution. Antigen Retrieval: Heat mediated was performed using Tris/EDTA buffer pH 9.0.



Western blot: 10 µg of HeLa, A431, HT-29, HepG2, Molt-4 and SH-SY5Y cell lysates stained with anti-CREB antibody [SQab1877] at 1:1000 dilution.

References

1. -
2. -
3. -
4. -
5. -

FOR RESEARCH USE ONLY. NOT FOR USE IN DIAGNOSTIC PROCEDURES