



# SZABO SCANDIC

Part of Europa Biosite

## Produktinformation



Forschungsprodukte & Biochemikalien



Zellkultur & Verbrauchsmaterial



Diagnostik & molekulare Diagnostik



Laborgeräte & Service

Weitere Information auf den folgenden Seiten!  
See the following pages for more information!



### Lieferung & Zahlungsart

siehe unsere [Liefer- und Versandbedingungen](#)

### Zuschläge

- Mindermengenzuschlag
- Trockeneiszuschlag
- Gefahrgutzuschlag
- Expressversand

### SZABO-SCANDIC HandelsgmbH

Quellenstraße 110, A-1100 Wien

T. +43(0)1 489 3961-0

F. +43(0)1 489 3961-7

[mail@szabo-scandic.com](mailto:mail@szabo-scandic.com)

[www.szabo-scandic.com](http://www.szabo-scandic.com)

[linkedin.com/company/szaboscandic](https://www.linkedin.com/company/szaboscandic) 

Rabbit anti-Cytokeratin 18 antibody, clone SQab18102 (monoclonal)

Clone no. SQab18102

MONOSAN

---

Product name	Rabbit anti-Cytokeratin 18 antibody, clone SQab18102 (monoclonal)
Host	Rabbit
Applications	IHC-P, WB
Species reactivity	Human
Conjugate	-
Immunogen	Synthetic peptide within aa. 330-430 of Human Cytokeratin 18.
Isotype	-
Clonality	Monoclonal
Clone number	SQab18102
Size	100 ul
Concentration	n/a
Format	Purification with Protein A.
Storage buffer	PBS, 0.01% Sodium azide, 40% Glycerol and 0.05% BSA.
Storage until expiry date	-20°C

FOR RESEARCH USE ONLY. NOT FOR USE IN DIAGNOSTIC PROCEDURES

Rabbit anti-Cytokeratin 18 antibody, clone SQab18102 (monoclonal)

Clone no. SQab18102

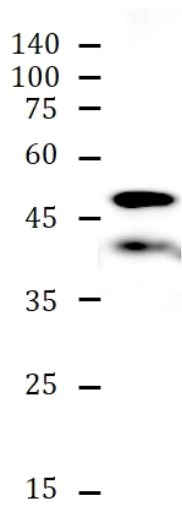
MONOSAN

---

**Additional info**

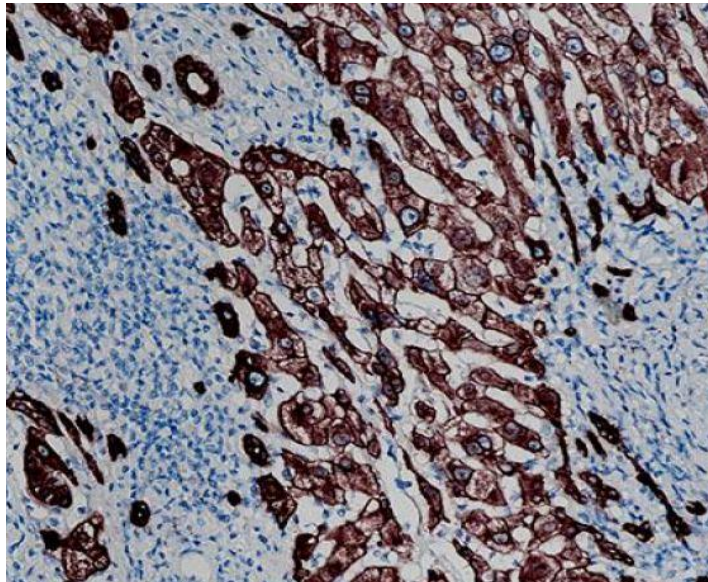
Application note: IHC-P: Antigen Retrieval: Heat mediated was performed using Tris/EDTA buffer (pH 9.0), primary antibody incubate at RT for 30 min.\* The dilutions indicate recommended starting dilutions and the optimal dilutions or concentrations should be determined by the scientist. Storage instruction: For continuous use, store undiluted antibody at 2-8°C for up to a week. For long-term storage, aliquot and store at -20°C. Storage in frost free freezers is not recommended. Avoid repeated freeze/thaw cycles. Suggest spin the vial prior to opening. The antibody solution should be gently mixed before use. Background: Cytokeratin 18, together with its filament partner Cytokeratin 8, are perhaps the most commonly found members of the intermediate filament gene family. They are expressed in single layer epithelial tissues of the body. Mutations in this gene have been linked to cryptogenic cirrhosis. Two transcript variants encoding the same protein have been found for this gene. [provided by RefSeq, Jul 2008]

Images



HCT116

Western blot: HCT116 cell lysate stained with anti-Cytokeratin 18 antibody [SQab18102] at 1:1000 dilution.



Immunohistochemistry: Formalin-fixed and paraffin-embedded liver tissue stained with anti-Cytokeratin 18 antibody [SQab18102]. Antigen Retrieval: Heat mediated was performed using Tris/EDTA buffer (pH 9.0).

References

- 1. -
- 2. -
- 3. -
- 4. -
- 5. -

FOR RESEARCH USE ONLY. NOT FOR USE IN DIAGNOSTIC PROCEDURES