



SZABO SCANDIC

Part of Europa Biosite

Produktinformation



Forschungsprodukte & Biochemikalien



Zellkultur & Verbrauchsmaterial



Diagnostik & molekulare Diagnostik



Laborgeräte & Service

Weitere Information auf den folgenden Seiten!
See the following pages for more information!



Lieferung & Zahlungsart

siehe unsere [Liefer- und Versandbedingungen](#)

Zuschläge

- Mindermengenzuschlag
- Trockeneiszuschlag
- Gefahrgutzuschlag
- Expressversand

SZABO-SCANDIC HandelsgmbH

Quellenstraße 110, A-1100 Wien

T. +43(0)1 489 3961-0

F. +43(0)1 489 3961-7

mail@szabo-scandic.com

www.szabo-scandic.com

[linkedin.com/company/szaboscandic](https://www.linkedin.com/company/szaboscandic) 

Rabbit anti-CD10 antibody, clone SQab18105 (monoclonal)

Clone no. SQab18105

MONOSAN

| | |
|---------------------------|---|
| Product name | Rabbit anti-CD10 antibody, clone SQab18105 (monoclonal) |
| Host | Rabbit |
| Applications | IHC-P |
| Species reactivity | Human |
| Conjugate | - |
| Immunogen | Recombinant protein within aa. 1-500 of Human CD10. |
| Isotype | - |
| Clonality | Monoclonal |
| Clone number | SQab18105 |
| Size | 100 ul |
| Concentration | n/a |
| Format | Purification with Protein A. |
| Storage buffer | PBS, 0.01% Sodium azide, 40% Glycerol and 0.05% BSA. |
| Storage until expiry date | -20°C |

FOR RESEARCH USE ONLY. NOT FOR USE IN DIAGNOSTIC PROCEDURES

Rabbit anti-CD10 antibody, clone SQab18105 (monoclonal)

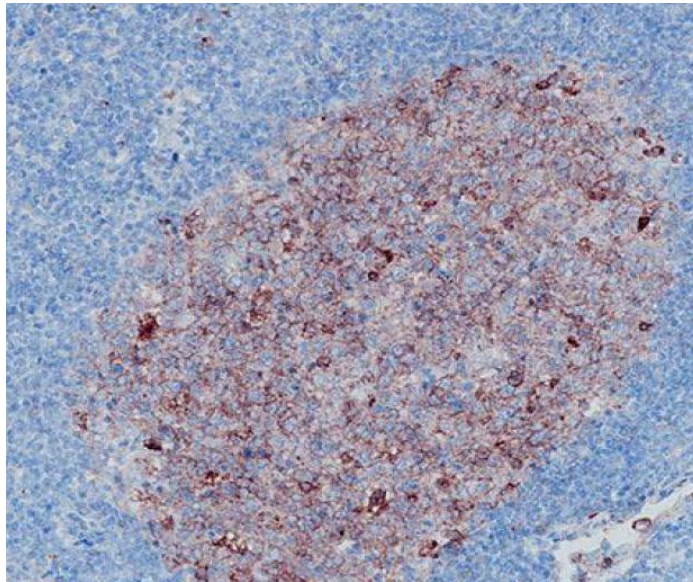
Clone no. SQab18105

MONOSAN

Additional info

Application note: IHC-P: Antigen Retrieval: Heat mediated was performed using Tris/EDTA buffer (pH 9.0), primary antibody incubate at RT for 30 min.* The dilutions indicate recommended starting dilutions and the optimal dilutions or concentrations should be determined by the scientist. Storage instruction: For continuous use, store undiluted antibody at 2-8°C for up to a week. For long-term storage, aliquot and store at -20°C. Storage in frost free freezers is not recommended. Avoid repeated freeze/thaw cycles. Suggest spin the vial prior to opening. The antibody solution should be gently mixed before use. Background: CD10 is a type II transmembrane glycoprotein and a common acute lymphocytic leukemia antigen that is an important cell surface marker in the diagnosis of human acute lymphocytic leukemia (ALL). The encoded protein is present on leukemic cells of pre-B phenotype, which represent 85% of cases of ALL. This protein is not restricted to leukemic cells, however, and is found on a variety of normal tissues. The protein is a neutral endopeptidase that cleaves peptides at the amino side of hydrophobic residues and inactivates several peptide hormones including glucagon, enkephalins, substance P, neurotensin, oxytocin, and bradykinin. [provided by RefSeq, Aug 2017]

Images



Immunohistochemistry: Formalin-fixed and paraffin-embedded tonsil tissue stained with anti-CD10 antibody [SQab18105]. Antigen Retrieval: Heat mediated was performed using Tris/EDTA buffer (pH 9.0).

0

0

References

1. -
2. -
3. -
4. -
5. -

FOR RESEARCH USE ONLY. NOT FOR USE IN DIAGNOSTIC PROCEDURES