



# SZABO SCANDIC

Part of Europa Biosite

## Produktinformation



Forschungsprodukte & Biochemikalien



Zellkultur & Verbrauchsmaterial



Diagnostik & molekulare Diagnostik



Laborgeräte & Service

Weitere Information auf den folgenden Seiten!  
See the following pages for more information!



### Lieferung & Zahlungsart

siehe unsere [Liefer- und Versandbedingungen](#)

### Zuschläge

- Mindermengenzuschlag
- Trockeneiszuschlag
- Gefahrgutzuschlag
- Expressversand

### SZABO-SCANDIC HandelsgmbH

Quellenstraße 110, A-1100 Wien

T. +43(0)1 489 3961-0

F. +43(0)1 489 3961-7

[mail@szabo-scandic.com](mailto:mail@szabo-scandic.com)

[www.szabo-scandic.com](http://www.szabo-scandic.com)

[linkedin.com/company/szaboscandic](https://www.linkedin.com/company/szaboscandic)

Rabbit anti-ERBB2 / HER2 antibody, clone SQab1890 (monoclonal)

Clone no. SQab1890

MONOSAN

---

|                           |  |
|---------------------------|--|
| Product name              | Rabbit anti-ERBB2 / HER2 antibody, clone SQab1890 (monoclonal) |
| Host                      | Rabbit   |
| Applications              | IHC-P  |
| Species reactivity        | Human  |
| Conjugate                 | -  |
| Immunogen                 | Synthetic peptide around the C-terminus of Human HER2 / ErbB2. |
| Isotype                   | -  |
| Clonality                 | Monoclonal   |
| Clone number              | SQab1890   |
| Size                      | 100 ul   |
| Concentration             | n/a  |
| Format                    | Purification with Protein A.                                   |
| Storage buffer            | PBS, 0.01% Sodium azide, 40% Glycerol and 0.05% BSA.           |
| Storage until expiry date | -20°C  |

FOR RESEARCH USE ONLY. NOT FOR USE IN DIAGNOSTIC PROCEDURES

Rabbit anti-ERBB2 / HER2 antibody, clone SQab1890 (monoclonal)

Clone no. SQab1890

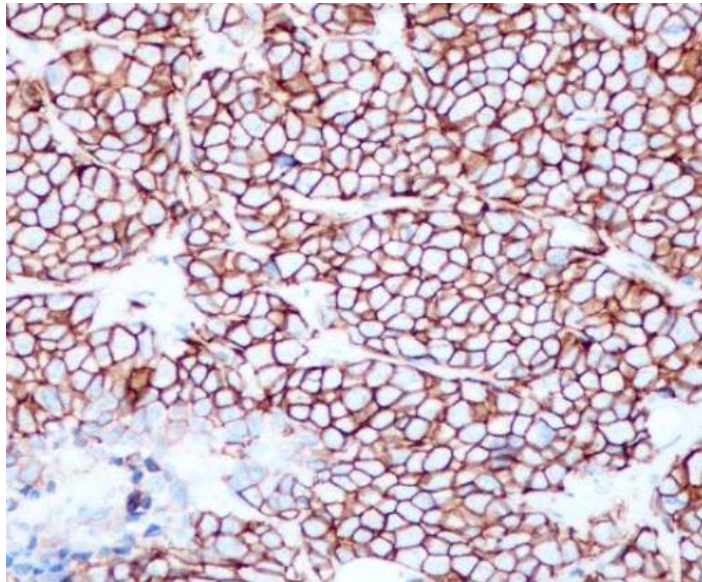
MONOSAN

---

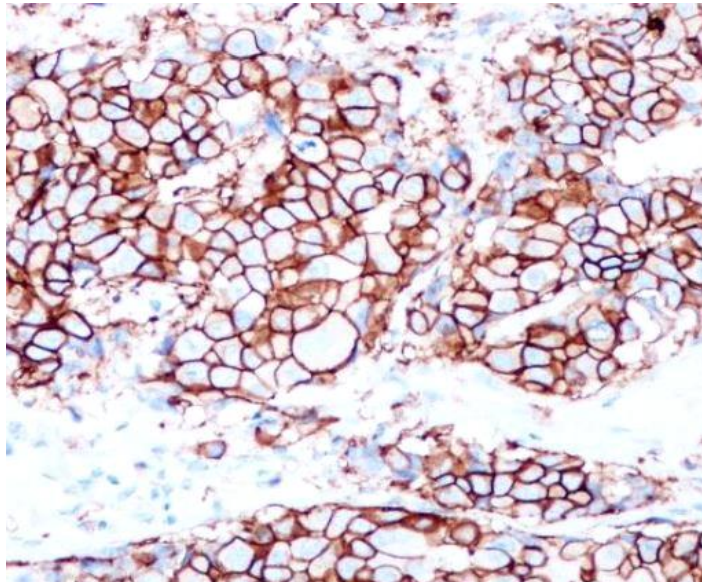
**Additional info**

Application note: IHC-P: Antigen Retrieval: Heat mediated was performed using Tris/EDTA buffer (pH 9.0)\* The dilutions indicate recommended starting dilutions and the optimal dilutions or concentrations should be determined by the scientist. Storage instruction: For continuous use, store undiluted antibody at 2-8°C for up to a week. For long-term storage, aliquot and store at -20°C. Storage in frost free freezers is not recommended. Avoid repeated freeze/thaw cycles. Suggest spin the vial prior to opening. The antibody solution should be gently mixed before use. Background: This gene encodes a member of the epidermal growth factor (EGF) receptor family of receptor tyrosine kinases. This protein has no ligand binding domain of its own and therefore cannot bind growth factors. However, it does bind tightly to other ligand-bound EGF receptor family members to form a heterodimer, stabilizing ligand binding and enhancing kinase-mediated activation of downstream signalling pathways, such as those involving mitogen-activated protein kinase and phosphatidylinositol-3 kinase. Allelic variations at amino acid positions 654 and 655 of isoform a (positions 624 and 625 of isoform b) have been reported, with the most common allele, Ile654/Ile655, shown here. Amplification and/or overexpression of this gene has been reported in numerous cancers, including breast and ovarian tumors. Alternative splicing results in several additional transcript variants, some encoding different isoforms and others that have not been fully characterized. [provided by RefSeq, Jul 2008]

Images



Immunohistochemistry: Formalin-fixed and paraffin-embedded Human breast cancer tissue stained with anti-ERBB2 / HER2 antibody [SQab1890] at 1:500 dilution. Antigen Retrieval: Heat mediated was performed using Tris/EDTA buffer (pH 9.0).



Immunohistochemistry: Formalin-fixed and paraffin-embedded Human breast cancer tissue stained with anti-ERBB2 / HER2 antibody [SQab1890] at 1:500 dilution. Antigen Retrieval: Heat mediated was performed using Tris/EDTA buffer (pH 9.0).

References

1. -
2. -
3. -
4. -
5. -

FOR RESEARCH USE ONLY. NOT FOR USE IN DIAGNOSTIC PROCEDURES