



SZABO SCANDIC

Part of Europa Biosite

Produktinformation



Forschungsprodukte & Biochemikalien



Zellkultur & Verbrauchsmaterial



Diagnostik & molekulare Diagnostik



Laborgeräte & Service

Weitere Information auf den folgenden Seiten!
See the following pages for more information!



Lieferung & Zahlungsart

siehe unsere [Liefer- und Versandbedingungen](#)

Zuschläge

- Mindermengenzuschlag
- Trockeneiszuschlag
- Gefahrgutzuschlag
- Expressversand

SZABO-SCANDIC HandelsgmbH

Quellenstraße 110, A-1100 Wien

T. +43(0)1 489 3961-0

F. +43(0)1 489 3961-7

mail@szabo-scandic.com

www.szabo-scandic.com

[linkedin.com/company/szaboscandic](https://www.linkedin.com/company/szaboscandic) 

Rabbit anti-Actin antibody, clone SQab18109 (monoclonal)

Clone no. SQab18109

MONOSAN

Product name	Rabbit anti-Actin antibody, clone SQab18109 (monoclonal)
Host	Rabbit
Applications	IHC-P, WB
Species reactivity	Human, Mouse
Conjugate	-
Immunogen	Synthetic peptide around the N-terminus of Human Actin.
Isotype	-
Clonality	Monoclonal
Clone number	SQab18109
Size	100 ul
Concentration	n/a
Format	Purification with Protein A.
Storage buffer	PBS, 0.01% Sodium azide, 40% Glycerol and 0.05% BSA.
Storage until expiry date	-20°C

FOR RESEARCH USE ONLY. NOT FOR USE IN DIAGNOSTIC PROCEDURES

Rabbit anti-Actin antibody, clone SQab18109 (monoclonal)

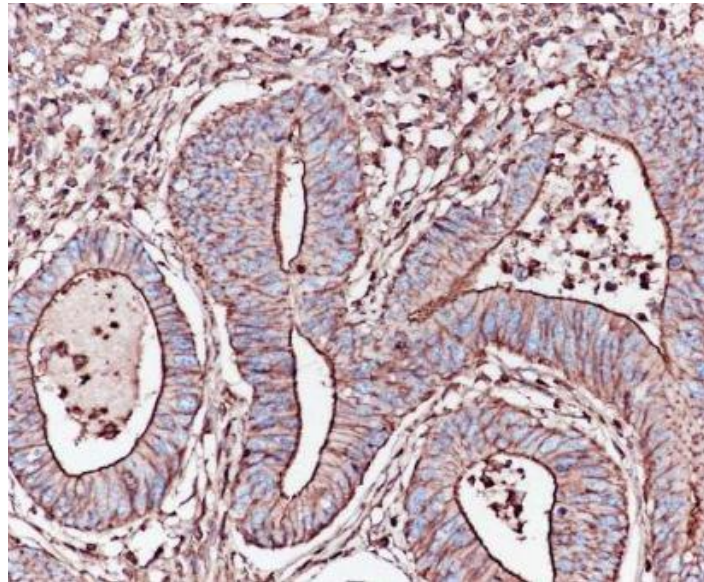
Clone no. SQab18109

MONOSAN

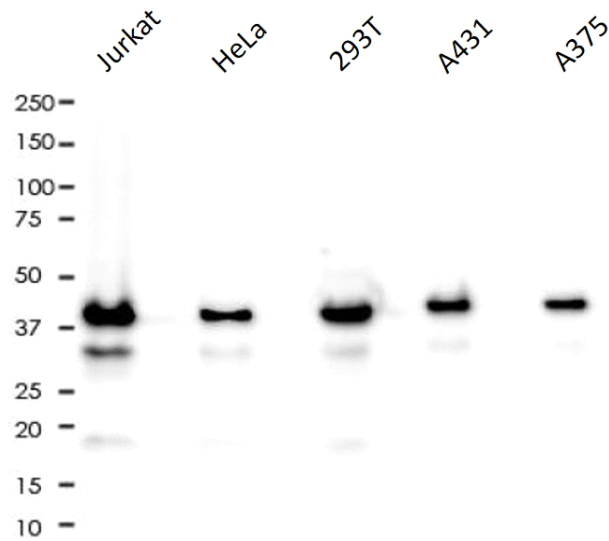
Additional info

Application note: IHC-P: Antigen Retrieval: Heat mediated was performed using Tris/EDTA buffer (pH 9.0).* The dilutions indicate recommended starting dilutions and the optimal dilutions or concentrations should be determined by the scientist. Storage instruction: For continuous use, store undiluted antibody at 2-8°C for up to a week. For long-term storage, aliquot and store at -20°C. Storage in frost free freezers is not recommended. Avoid repeated freeze/thaw cycles. Suggest spin the vial prior to opening. The antibody solution should be gently mixed before use. Background: Actin is a highly conserved ubiquitous globular protein (G-actin) that polymerizes to form fibrous F-actin microfilaments. In higher eucaryotes several actin isoforms have been identified, that fall into three classes. Alpha actin is a structural component of the contractile apparatus of muscle cells or muscle-derived cells. Beta actin and gamma actin play roles in regulation of cell motility in other cell types. Specific subcellular structures such as stress fibers, focal adhesions, filopodia etc., are formed by involvement of actin cytoskeleton.

Images



Immunohistochemistry: Formalin-fixed and paraffin-embedded Human colonic adenocarcinoma stained with anti-Actin antibody [SQab18109] at 1:1600 dilution. Antigen Retrieval: Heat mediated was performed using Tris/EDTA buffer (pH 9.0).



Western blot: 10 µg of Jurkat, HeLa, 293T, A431 and A375 cell lysates stained with anti-Actin antibody [SQab18109] at 1:1000 dilution.

References

- 1. -
- 2. -
- 3. -
- 4. -
- 5. -

FOR RESEARCH USE ONLY. NOT FOR USE IN DIAGNOSTIC PROCEDURES