



SZABO SCANDIC

Part of Europa Biosite

Produktinformation



Forschungsprodukte & Biochemikalien



Zellkultur & Verbrauchsmaterial



Diagnostik & molekulare Diagnostik



Laborgeräte & Service

Weitere Information auf den folgenden Seiten!
See the following pages for more information!



Lieferung & Zahlungsart

siehe unsere [Liefer- und Versandbedingungen](#)

Zuschläge

- Mindermengenzuschlag
- Trockeneiszuschlag
- Gefahrgutzuschlag
- Expressversand

SZABO-SCANDIC HandelsgmbH

Quellenstraße 110, A-1100 Wien

T. +43(0)1 489 3961-0

F. +43(0)1 489 3961-7

mail@szabo-scandic.com

www.szabo-scandic.com

[linkedin.com/company/szaboscandic](https://www.linkedin.com/company/szaboscandic) 

Rabbit anti-CD35 / CR1 antibody, clone SQab19151 (monoclonal)

Clone no. SQab19151

MONOSAN

Product name	Rabbit anti-CD35 / CR1 antibody, clone SQab19151 (monoclonal)
Host	Rabbit
Applications	IHC-P
Species reactivity	Human
Conjugate	-
Immunogen	Synthetic peptide within aa. 1939-2039 of Human CD35.
Isotype	-
Clonality	Monoclonal
Clone number	SQab19151
Size	100 ul
Concentration	n/a
Format	Purification with Protein A.
Storage buffer	PBS, 0.01% Sodium azide, 40% Glycerol and 0.05% BSA.
Storage until expiry date	-20°C

FOR RESEARCH USE ONLY. NOT FOR USE IN DIAGNOSTIC PROCEDURES

Rabbit anti-CD35 / CR1 antibody, clone SQab19151 (monoclonal)

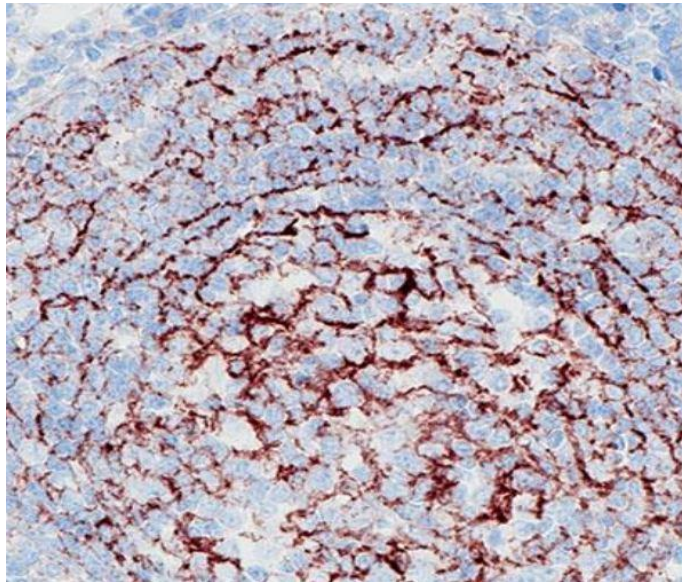
Clone no. SQab19151

MONOSAN

Additional info

Application note: IHC-P: Antigen Retrieval: Heat mediation was performed in Tris/EDTA buffer (pH 9.0), primary antibody incubate at RT (18°C - 25°C) for 30 minutes.* The dilutions indicate recommended starting dilutions and the optimal dilutions or concentrations should be determined by the scientist. Storage instruction: For continuous use, store undiluted antibody at 2-8°C for up to a week. For long-term storage, aliquot and store at -20°C. Storage in frost free freezers is not recommended. Avoid repeated freeze/thaw cycles. Suggest spin the vial prior to opening. The antibody solution should be gently mixed before use. Background: This gene is a member of the receptors of complement activation (RCA) family and is located in the 'cluster RCA' region of chromosome 1. The gene encodes a monomeric single-pass type I membrane glycoprotein found on erythrocytes, leukocytes, glomerular podocytes, and splenic follicular dendritic cells. The Knops blood group system is a system of antigens located on this protein. The protein mediates cellular binding to particles and immune complexes that have activated complement. Decreases in expression of this protein and/or mutations in its gene have been associated with gallbladder carcinomas, mesangiocapillary glomerulonephritis, systemic lupus erythematosus and sarcoidosis. Mutations in this gene have also been associated with a reduction in Plasmodium falciparum rosetting, conferring protection against severe malaria. Alternate allele-specific splice variants, encoding different isoforms, have been characterized. Additional allele specific isoforms, including a secreted form, have been described but have not been fully characterized. [provided by RefSeq, Jul 2008]

Images



Immunohistochemistry: Formalin/PFA-fixed and paraffin-embedded Human tonsil tissue stained with anti-CD35 / CR1 antibody [SQab19151]. Antigen Retrieval: Heat mediation was performed in Tris/EDTA buffer (pH 9.0).

-

0

References

1. -
2. -
3. -
4. -
5. -

FOR RESEARCH USE ONLY. NOT FOR USE IN DIAGNOSTIC PROCEDURES