



SZABO SCANDIC

Part of Europa Biosite

Produktinformation



Forschungsprodukte & Biochemikalien



Zellkultur & Verbrauchsmaterial



Diagnostik & molekulare Diagnostik



Laborgeräte & Service

Weitere Information auf den folgenden Seiten!
See the following pages for more information!



Lieferung & Zahlungsart

siehe unsere [Liefer- und Versandbedingungen](#)

Zuschläge

- Mindermengenzuschlag
- Trockeneiszuschlag
- Gefahrgutzuschlag
- Expressversand

SZABO-SCANDIC HandelsgmbH

Quellenstraße 110, A-1100 Wien

T. +43(0)1 489 3961-0

F. +43(0)1 489 3961-7

mail@szabo-scandic.com

www.szabo-scandic.com

[linkedin.com/company/szaboscandic](https://www.linkedin.com/company/szaboscandic) 

Rabbit anti-TLE1 antibody, clone SQab22275 (monoclonal)

Clone no. SQab22275

MONOSAN

Product name	Rabbit anti-TLE1 antibody, clone SQab22275 (monoclonal)
Host	Rabbit
Applications	IHC-P
Species reactivity	Human
Conjugate	-
Immunogen	Full length protein corresponding to Human TLE1.
Isotype	-
Clonality	Monoclonal
Clone number	SQab22275
Size	100 ul
Concentration	n/a
Format	Purification with Protein A.
Storage buffer	PBS, 0.01% Sodium azide, 40% Glycerol and 0.05%BSA.
Storage until expiry date	-20°C

FOR RESEARCH USE ONLY. NOT FOR USE IN DIAGNOSTIC PROCEDURES

Rabbit anti-TLE1 antibody, clone SQab22275 (monoclonal)

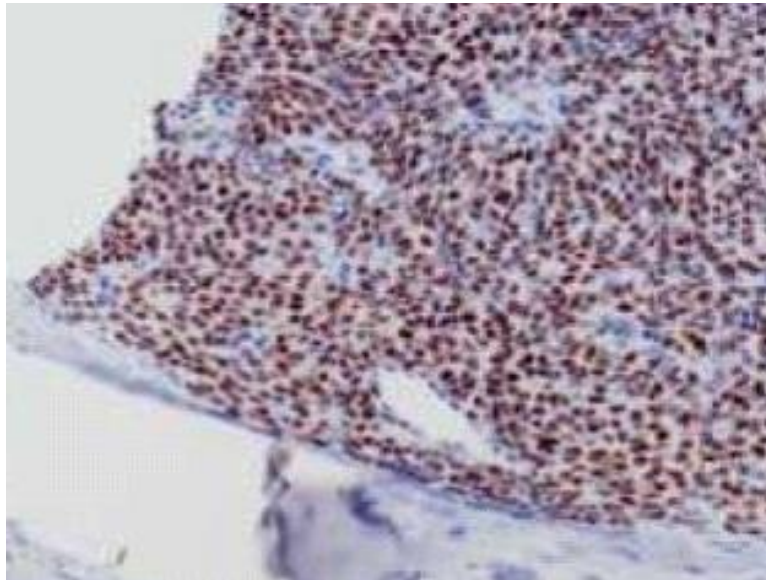
Clone no. SQab22275

MONOSAN

Additional info

Application note: IHC-P: Antigen Retrieval: Heat mediated was performed using Tris/EDTA buffer (pH 9.0). Incubate the samples at RT (18-25°C) for 30 min. * The dilutions indicate recommended starting dilutions and the optimal dilutions or concentrations should be determined by the scientist. Storage instruction: For continuous use, store undiluted antibody at 2-8°C for up to a week. For long-term storage, aliquot and store at -20°C or below. Storage in frost free freezers is not recommended. Avoid repeated freeze/thaw cycles. Suggest spin the vial prior to opening. The antibody solution should be gently mixed before use. Background: Enables identical protein binding activity and transcription corepressor activity. Involved in negative regulation of I-kappaB kinase/NF-kappaB signaling; negative regulation of anoikis; and regulation of gene expression. Located in cytosol and nucleoplasm. Part of beta-catenin-TCF complex. [provided by Alliance of Genome Resources, Apr 2022]

Images



Immunohistochemistry: Formalin/PFA-fixed and paraffin-embedded sections of Human synovial sarcoma stained with anti-TLE1 antibody [SQab22275]. Antigen Retrieval: Heat tissue section in Tris-EDTA buffer (pH 9.0).

-

0

References

1. -
2. -
3. -
4. -
5. -

FOR RESEARCH USE ONLY. NOT FOR USE IN DIAGNOSTIC PROCEDURES