



SZABO SCANDIC

Part of Europa Biosite

Produktinformation



Forschungsprodukte & Biochemikalien



Zellkultur & Verbrauchsmaterial



Diagnostik & molekulare Diagnostik



Laborgeräte & Service

Weitere Information auf den folgenden Seiten!
See the following pages for more information!



Lieferung & Zahlungsart

siehe unsere [Liefer- und Versandbedingungen](#)

Zuschläge

- Mindermengenzuschlag
- Trockeneiszuschlag
- Gefahrgutzuschlag
- Expressversand

SZABO-SCANDIC HandelsgmbH

Quellenstraße 110, A-1100 Wien

T. +43(0)1 489 3961-0

F. +43(0)1 489 3961-7

mail@szabo-scandic.com

www.szabo-scandic.com

[linkedin.com/company/szaboscandic](https://www.linkedin.com/company/szaboscandic) 

Rabbit anti-alpha Fetoprotein antibody, clone SQab30312 (monoclonal)

Clone no. SQab30312

MONOSAN

| | |
|---------------------------|--|
| Product name | Rabbit anti-alpha Fetoprotein antibody, clone SQab30312 (monoclonal) |
| Host | Rabbit |
| Applications | IHC-P |
| Species reactivity | Human |
| Conjugate | - |
| Immunogen | Synthetic peptide of Human alpha Fetoprotein. |
| Isotype | - |
| Clonality | Monoclonal |
| Clone number | SQab30312 |
| Size | 100 ul |
| Concentration | n/a |
| Format | Purification with Protein A. |
| Storage buffer | PBS, 0.01% Sodium azide, 40% Glycerol and 0.05%BSA. |
| Storage until expiry date | -20°C |

FOR RESEARCH USE ONLY. NOT FOR USE IN DIAGNOSTIC PROCEDURES

Rabbit anti-alpha Fetoprotein antibody, clone SQab30312 (monoclonal)

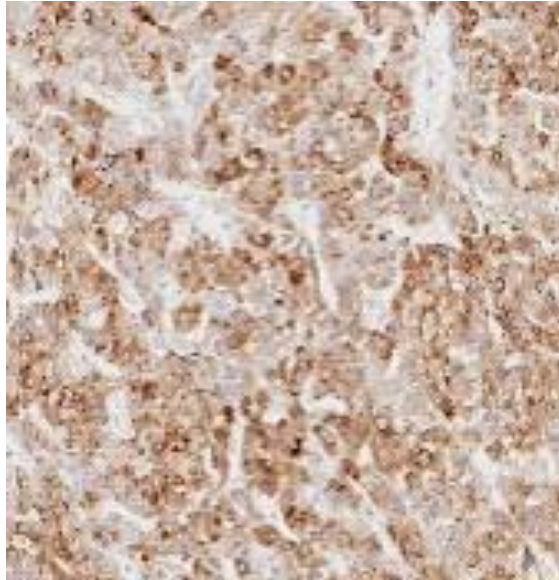
Clone no. SQab30312

MONOSAN

Additional info

Application note: The dilutions indicate recommended starting dilutions and the optimal dilutions or concentrations should be determined by the scientist. Storage instruction: For continuous use, store undiluted antibody at 2-8°C for up to a week. For long-term storage, aliquot and store at -20°C or below. Storage in frost free freezers is not recommended. Avoid repeated freeze/thaw cycles. Suggest spin the vial prior to opening. The antibody solution should be gently mixed before use. Background: This gene encodes alpha-fetoprotein, a major plasma protein produced by the yolk sac and the liver during fetal life. Alpha-fetoprotein expression in adults is often associated with hepatocarcinoma and with teratoma, and has prognostic value for managing advanced gastric cancer. However, hereditary persistence of alpha-fetoprotein may also be found in individuals with no obvious pathology. The protein is thought to be the fetal counterpart of serum albumin, and the alpha-fetoprotein and albumin genes are present in tandem in the same transcriptional orientation on chromosome 4. Alpha-fetoprotein is found in monomeric as well as dimeric and trimeric forms, and binds copper, nickel, fatty acids and bilirubin. The level of alpha-fetoprotein in amniotic fluid is used to measure renal loss of protein to screen for spina bifida and anencephaly. [provided by RefSeq, Oct 2019]

Images



Immunohistochemistry: Formalin-fixed and paraffin-embedded hepatocellular carcinoma stained with anti-alpha Fetoprotein antibody [SQab30312].

-

0

References

1. -
2. -
3. -
4. -
5. -

FOR RESEARCH USE ONLY. NOT FOR USE IN DIAGNOSTIC PROCEDURES