



SZABO SCANDIC

Part of Europa Biosite

Produktinformation



Forschungsprodukte & Biochemikalien



Zellkultur & Verbrauchsmaterial



Diagnostik & molekulare Diagnostik



Laborgeräte & Service

Weitere Information auf den folgenden Seiten!
See the following pages for more information!



Lieferung & Zahlungsart

siehe unsere [Liefer- und Versandbedingungen](#)

Zuschläge

- Mindermengenzuschlag
- Trockeneiszuschlag
- Gefahrgutzuschlag
- Expressversand

SZABO-SCANDIC HandelsgmbH

Quellenstraße 110, A-1100 Wien

T. +43(0)1 489 3961-0

F. +43(0)1 489 3961-7

mail@szabo-scandic.com

www.szabo-scandic.com

[linkedin.com/company/szaboscandic](https://www.linkedin.com/company/szaboscandic) 

Desmin; Clone D33

| Catalog Number | Format | Volume |
|----------------|----------------|--------|
| A00007-0002 | (Ready-To-Use) | 2 ml |
| A00007-0007 | (Ready-To-Use) | 7 ml |
| A00007-0025 | (Ready-To-Use) | 25 ml |
| A00007-C.1 | (Concentrate) | 0.1 ml |
| A00007-C | (Concentrate) | 1 ml |

Intended Use

For In Vitro Diagnostic use. This antibody is intended for the qualitative visualization of the anatomical elements listed in the Specificity section. It is intended to be used within an Immunohistochemistry (IHC) procedure on formalin-fixed paraffin-embedded (FFPE) human tissue followed by visualization by light microscopy. Any diagnostic interpretation of the results of this antibody is to be complemented by morphological studies using proper controls and should be evaluated within the context of the patient's clinical history and other diagnostic tests by a qualified pathologist.

Description

Titer/Working Dilution: Ready-to-Use: No further dilution required.

Concentrate: Suggested dilution is 1:200-400

Species: Mouse

Immunogen: Proteins from human Leiomyoma.

Clone: D33

Isotype: IgG1, Kappa.

Entrez Gene ID: 1674 (Human)

Hu Chromosome Loc.: 2q35

Synonyms: CMD1I, CSM1, CSM2, DES, Intermediate Filament Protein

Mol. Wt. of Antigen: 52kDa

Format: Ready-To-Use antibody has been pretreated and quality controlled to work on formalin-fixed paraffin-embedded as well as acetone fixed cryostat tissue sections. No further titration is required.

Concentrate antibody is provided at 200µg/ml of Ab purified from Bioreactor Concentrate by Protein A/G. Prepared in 10mM PBS with 0.05% BSA & 0.05% Sodium Azide.

Specificity: Desmin, Clone D33 detects cells of normal smooth, skeletal, and cardiac muscles. This antibody reacts with leiomyomas, leiomyosarcoma, rhabdomyomas, rhabdomyosarcoma, and perivascular cells of glomus tumors of the skin.

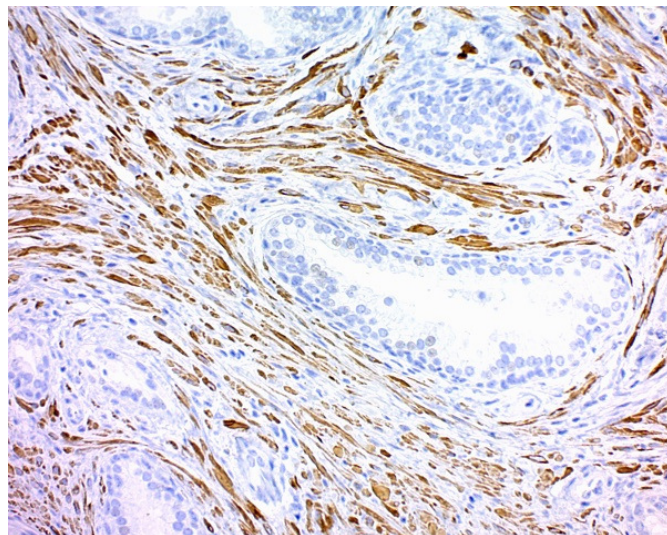
Background: Cytoskeletal intermediate filaments constitute a diverse group of proteins that are expressed in a highly tissue-specific manner. Intermediate filaments are constructed from two-chain α-helical coiled-coil molecules arranged on an imperfect helical lattice, and have been widely used as markers for distinguishing individual cell types within a tissue and identifying the origins of metastatic tumors. Vimentin and Desmin, a related class III intermediate filament, are both expressed during skeletal muscle development. Desmin, a 469 amino acid protein found near the Z line in sarcomeres, is expressed more frequently in adult differentiated state tissues.

Species Reactivity: Human, Rat, Mouse, Hamster, Chicken. Others-not known

Positive Control: SJRH30 cells, Uterus, Leiomyosarcoma, Muscle.

Cellular Localization: Cytoplasmic

Microbiological State: Nonsterile.



Human prostate stained using Desmin; Clone D33. Pretreatment with Tris-EDTA HIER Solution (10x) pH 9.0 for 5 minutes, PolyTek Anti-Mouse Polymerized HRP and DAB Chromogen/Substrate (High Contrast). Counterstained with Hematoxylin, Mayer's (Lillie's Modification). Final magnification 200X.

Materials and Reagents Required but not Provided

- Control tissue and reagents
- Xylene, graded alcohols, and deionized/distilled water
- Antibody Diluent.
- IHC detection system. Suggested: ScyTek Cat# ABZ125 "CRF Anti-Polyvalent HRP Polymer" and ScyTek Cat# ACV500 "DAB Chromogen/Substrate Kit (High Contrast)".
- Wash buffer for rinses (ScyTek Cat# TBT500)
- HIER Retrieval Solution
- Hematoxylin counterstain and bluing reagent (ScyTek Cat# HMM500 and BRT500)
- Mounting medium and coverslips

Note: ScyTek Laboratories has a wide range of IHC reagents and ancillaries that can be found at scytek.com.

Procedure

1. **Tissue Section Pretreatment (Required):** Staining of formalin fixed, paraffin embedded tissue sections is significantly enhanced by pretreatment with pH 8-9 HIER Solution (see ScyTek catalog# ETA or TES for instructions).


2. **Primary Antibody Incubation Time:** We suggest an incubation period of 30 minutes at room temperature. However, depending upon the fixation conditions and the staining system employed, optimal incubation should be determined by the user.

3. **Visualization:** For maximum staining intensity we recommend the "CRF Anti-Polyvalent HRP Polymer" (ScyTek catalog# ABZ125, see IFU for instructions) combined with the "DAB Chromogen/Substrate Bulk Pack (High Contrast)" (ScyTek catalog# ACV500, see IFU for instructions).

Storage and Stability

Do not Freeze. Store at 2-8°C. Return to 2-8° immediately after use. Do not use after expiration date printed on label. Verify visually that antibody has not been contaminated before use. Do not use if reagent becomes cloudy or precipitates.

Storage: 2° C  8° C

 ScyTek Laboratories, Inc.
205 South 600 West
Logan, UT 84321
U.S.A.



Emergo Europe
Prinsessegracht 20
2514 AP The Hague, The Netherlands

Limitations

Immunohistochemistry is a complex technique involving both histological and immunological detection methods. Tissue processing and handling prior to immunostaining can cause inconsistent results. Variations in fixation and embedding or the inherent nature of the tissue specimen may cause variations in results. Endogenous peroxidase activity or pseudoperoxidase activity in erythrocytes and endogenous biotin may cause non-specific staining depending on detection system used. This data sheet's recommendations and procedures were validated using ScyTek IHC reagents and may not be suitable for other detection systems.

Precautions

1. Contains Sodium Azide as a preservative (0.09% w/v), do not ingest. Sodium Azide may react with lead and copper plumbing to form highly explosive metal azides. Upon disposal, flush with large volumes of water to prevent azide build-up in plumbing. This product contains no hazardous material at a reportable concentration according to U.S. 29 CFR 1910.1200, OSHA Hazardous Communication Standard and EC Directive 91/155/EC.
2. Do not pipette by mouth.
3. Avoid contact of reagents and specimens with skin and mucous membranes.
4. Avoid microbial contamination of reagents or increased nonspecific staining may occur.
5. The user must validate any procedures and recommendations that differ from this data sheet.
6. The SDS may be found at scytek.com

References

1. Debus E, et al. EMBO J. 1983; 2:2305-2312.
2. Altmannsberger M, et al. Am J Pathol. 1985; 118:85-95.
3. Kasuya J, Sudo R, Mitaka T, Ikeda M, Tanishita K. Hepatic stellate cell-mediated three-dimensional hepatocyte and endothelial cell triculture model. Tissue Engineering Part A. 2010 Oct 14;17(3-4):361-70.
4. Majumdar K, Tyagi I, Saran RK, Sakhuja P, Sharma A. Medulloblastoma with focal divergent/teratoid differentiation. Brain tumor pathology. 2013 Jan 1;30(1):50-6.
5. Kuru M, Beytut E, Kaya S, Karakurt E, Kacar C. Vaginal Fibrosarcoma in a Brown Swiss Cow. Ataturk Universitesi Vet. Bil. Derg. 2016; 11(3): pg 327-331.
6. Ciftci A, Aker H, Ozer H. Investigation of the Relationship between Malignant Tumors Originated from Peritoneal and Müllerian Epithelium with the Primary and Secondary Müllerian Systems-Immunohistochemical Analysis with Six Markers. Int J Pathol Clin Res. 2017;3:052.
7. Kiremit MC, Acar Ö, Sağlıcan Y, Esen T. Bilateral renal cell carcinoma with leiomyomatous stroma: A rare entity diagnosed synchronously and treated surgically in a staged fashion. Turkish journal of urology. 2017 Dec;43(4):566.
8. Agarwal S, Kakkur A, Damle NA, Kumar C, Sarangi J, Subudhi K, Jain D, Sharma MC. SMARCB1 (INI1)-deficient thyroid carcinoma: A novel entity expanding the spectrum of tumors with INI1 loss. Pathology-Research and Practice. 2020 Apr 1;216(4):152830.
9. Elmaci İ, Altınöz MA, Ozlu BE, Sari R, Er O, Danyeli AE, Karaarslan E. Benign leiomyoma with multiple metastases to vertebrae and calvarium: An index case with comprehensive review of endocrine targets. Neurosurgical review. 2021 Feb;44(1):289-300.

Warranty

No products or "Instructions For Use (IFU)" are to be construed as a recommendation for use in violation of any patents. We make no representations, warranties or assurances as to the accuracy or completeness of information provided on our IFU or website. Our warranty is limited to the actual price paid for the product. ScyTek Laboratories, Inc. is not liable for any property damage, personal injury, time or effort or economic loss caused by our products.

Storage: 2° C



8° C

ScyTek Laboratories, Inc.
205 South 600 West
Logan, UT 84321
U.S.A.Emergo Europe
Prinsessegracht 20
2514 AP The Hague, The Netherlands