



# SZABO SCANDIC

Part of Europa Biosite

## Produktinformation



Forschungsprodukte & Biochemikalien



Zellkultur & Verbrauchsmaterial



Diagnostik & molekulare Diagnostik



Laborgeräte & Service

Weitere Information auf den folgenden Seiten!  
See the following pages for more information!



### Lieferung & Zahlungsart

siehe unsere [Liefer- und Versandbedingungen](#)

### Zuschläge

- Mindermengenzuschlag
- Trockeneiszuschlag
- Gefahrgutzuschlag
- Expressversand

### SZABO-SCANDIC HandelsgmbH

Quellenstraße 110, A-1100 Wien

T. +43(0)1 489 3961-0

F. +43(0)1 489 3961-7

[mail@szabo-scandic.com](mailto:mail@szabo-scandic.com)

[www.szabo-scandic.com](http://www.szabo-scandic.com)

[linkedin.com/company/szaboscandic](https://www.linkedin.com/company/szaboscandic) 

## S-100; Polyclonal (Ready-To-Use)

Catalog Number	Volume
A00036-0002 (Ready-To-Use)	2 ml
A00036-0007 (Ready-To-Use)	7 ml
A00036-0025 (Ready-To-Use)	25 ml
A00036-C.1 (Concentrate)	0.1 ml
A00036-C (Concentrate)	1 ml

### Intended Use

For Research Use Only. This antibody is intended for the qualitative visualization of the anatomical elements listed in the Specificity section. It is intended to be used within an Immunohistochemistry (IHC) procedure on formalin-fixed paraffin-embedded (FFPE) human tissue followed by visualization by light microscopy.

### Description

**Titer/Working Dilution:** Ready-to-Use: No further dilution required.  
Concentrate: 1:75-125

**Species:** Rabbit  
**Immunogen:** Recombinant full-length human S100B protein.  
**Clone:** Polyclonal  
**Isotype:** IgG  
**Entrez Gene ID:** 6285  
**Hu Chromosome Loc.:** 2p16.3  
**Synonyms:** NEF; Protein S100-B; S-100 protein beta chain; S100 calcium binding protein beta (neural); S100 calcium-binding protein B; S100 protein beta chain; S100B; S100beta

**Mol. Wt. of Antigen:** 10-12kDa  
**Format:** Ready-To-Use antibody has been pretitered and quality controlled to work on formalin-fixed paraffin-embedded as well as acetone fixed cryostat tissue sections. No further titration is required.

Concentrate antibody is provided at 200µg/ml of Ab purified from Bioreactor Concentrate by Protein A/G. Prepared in 10mM PBS with 0.05% BSA & 0.05% Sodium Azide.

**Specificity:** This antibody is specific to an epitope located on the beta-chain (i.e. in S-100A and S-100B) but not on the alpha-chain of S-100 (i.e. in S-100A and S-100A0).

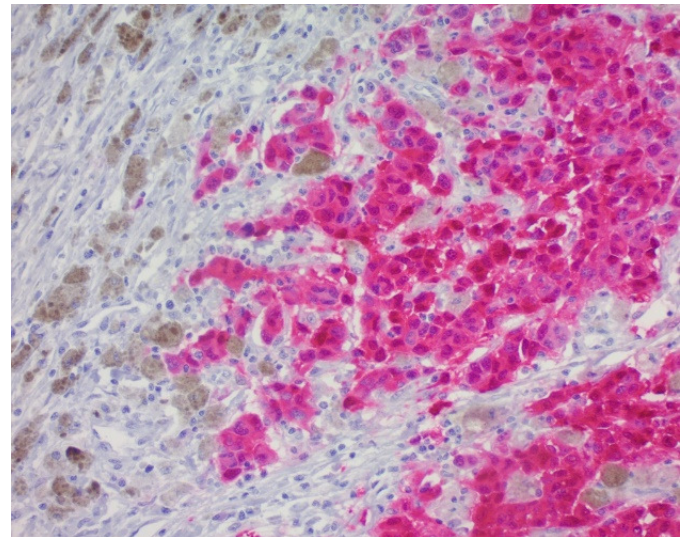
**Background:** S-100 belongs to the family of calcium binding proteins. S-100A and S-100B proteins are two members of the S-100 family. S-100A is composed of an alpha and beta chain whereas S-100B is composed of two beta chains. This antibody can be used to localize S-100A and S-100B in various tissue sections. S-100 protein has been found in normal melanocytes, Langerhans cells, histiocytes, chondrocytes, lipocytes, skeletal and cardiac muscle, Schwann cells, epithelial and myoepithelial cells of the breast, salivary and sweat glands, as well as in glial cells. Neoplasms derived from these cells also express S-100 protein, albeit non-uniformly. A large number of well-differentiated tumors of the salivary gland, adipose and cartilaginous tissue, and Schwann cell-derived tumors express S-100 protein. Almost all malignant melanomas and cases of histiocytosis X are positive for S-100 protein.

**Species Reactivity:** Human, Mouse, Rat and Cow. Others-not known

**Positive Control:** Melanoma, Schwannoma or Brain.

**Cellular Localization:** Cytoplasmic

**Microbiological State:** Nonsterile.



Human Melanoma (cut 5µ thick) stained using S-100; Polyclonal. Pretreatment with Pepsin, Stabilized Solution for 10 minutes at 37°C., PolyTek Anti-Rabbit Polymerized Alk-Phos and Permanent Red Chromogen. Counterstained with Hematoxylin, Mayer's (Lillie's Modification). Magnification 200X.

### Procedure

1. **Tissue Section Pretreatment (Recommended):** Staining of formalin fixed, paraffin embedded tissue sections may be significantly enhanced by pretreatment with Pepsin, Stabilized Solution (ScyTek catalog# PSS060) for 10 minutes at 37°C followed by a rinse in buffer.


2. **Primary Antibody Incubation Time:** We suggest an incubation period of 30 minutes at room temperature. However, depending upon the fixation conditions and the staining system employed, optimal incubation should be determined by the user.


3. **Visualization:** For maximum staining intensity we recommend the "CRF Anti-Polyvalent HRP Polymer" (ScyTek catalog# ABZ008, see IFU for instructions), combined with the "DAB Chromogen/Substrate Bulk Pack (High Contrast)" (ScyTek catalog# ACV500, see IFU for instructions).

### Materials and Reagents Required but not Provided

- Control tissue and reagents
- Xylene, graded alcohols, and deionized/distilled water
- Antibody Diluent
- IHC detection system. Suggested: ScyTek Cat# ABZ125 "CRF Anti-Polyvalent HRP Polymer" and ScyTek Cat# ACV500 "DAB Chromogen/Substrate Kit (High Contrast)".
- Wash buffer for rinses (ScyTek Cat# TBT500)
- Retrieval solution (ScyTek Cat# PSS060)
- Hematoxylin counterstain and bluing reagent (ScyTek Cat# HMM500 and BRT500)
- Mounting medium and coverslips

**Note:** ScyTek Laboratories has a wide range of IHC reagents and ancillaries that can be found at [scytek.com](http://scytek.com).

Storage: 2° C  8° C

 ScyTek Laboratories, Inc.  
205 South 600 West  
Logan, UT 84321  
U.S.A.

CE

EC REP

Emergo Europe  
Prinsessegracht 20  
2514 AP The Hague, The Netherlands

P.O. Box 3286 - Logan, Utah 84323, U.S.A. - Tel. (800) 729-8350 – Tel. (435) 755-9848 - Fax (435) 755-0015 - [www.ScyTek.com](http://www.ScyTek.com)

#### **Storage and Stability**

Do not Freeze. Store at 2-8°C. Return to 2-8° immediately after use. Do not use after expiration date printed on label. Verify visually that antibody has not been contaminated before use. Do not use if reagent becomes cloudy or precipitates.

#### **Limitations**

Immunohistochemistry is a complex technique involving both histological and immunological detection methods. Tissue processing and handling prior to immunostaining can cause inconsistent results. Variations in fixation and embedding or the inherent nature of the tissue specimen may cause variations in results. Endogenous peroxidase activity or pseudoperoxidase activity in erythrocytes and endogenous biotin may cause non-specific staining depending on detection system used. This data sheet's recommendations and procedures were validated using ScyTek IHC reagents and may not be suitable for other detection systems.

#### **Precautions**


1. Contains Sodium Azide as a preservative (0.09% w/v), do not ingest. Sodium Azide may react with lead and copper plumbing to form highly explosive metal azides. Upon disposal, flush with large volumes of water to prevent azide build-up in plumbing. This product contains no hazardous material at a reportable concentration according to U.S. 29 CFR 1910.1200, OSHA Hazardous Communication Standard and EC Directive 91/155/EC.
2. Do not pipette by mouth.
3. Avoid contact of reagents and specimens with skin and mucous membranes.
4. Avoid microbial contamination of reagents or increased nonspecific staining may occur.
5. The user must validate any procedures and recommendations that differ from this data sheet.
6. The SDS may be found at [scytek.com](http://scytek.com)


#### **References**

1. Heizmann, C.W. 1988. Calcium-binding proteins of the EF-type. J. Cardiovasc. Pharmacol. 5: S30-S37.

#### **Warranty**

No products or "Instructions For Use (IFU)" are to be construed as a recommendation for use in violation of any patents. We make no representations, warranties or assurances as to the accuracy or completeness of information provided on our IFU or website. Our warranty is limited to the actual price paid for the product. ScyTek Laboratories, Inc. is not liable for any property damage, personal injury, time or effort or economic loss caused by our products.

Storage: 2° C  8° C

 ScyTek Laboratories, Inc.  
205 South 600 West  
Logan, UT 84321  
U.S.A.

EC REP

Emergo Europe  
Prinsessegracht 20  
2514 AP The Hague, The Netherlands