



# SZABO SCANDIC

Part of Europa Biosite

## Produktinformation



Forschungsprodukte & Biochemikalien



Zellkultur & Verbrauchsmaterial



Diagnostik & molekulare Diagnostik



Laborgeräte & Service

Weitere Information auf den folgenden Seiten!  
See the following pages for more information!



### Lieferung & Zahlungsart

siehe unsere [Liefer- und Versandbedingungen](#)

### Zuschläge

- Mindermengenzuschlag
- Trockeneiszuschlag
- Gefahrgutzuschlag
- Expressversand

### SZABO-SCANDIC HandelsgmbH

Quellenstraße 110, A-1100 Wien

T. +43(0)1 489 3961-0

F. +43(0)1 489 3961-7

[mail@szabo-scandic.com](mailto:mail@szabo-scandic.com)

[www.szabo-scandic.com](http://www.szabo-scandic.com)

[linkedin.com/company/szaboscandic](https://www.linkedin.com/company/szaboscandic) 

# S-100; Clone 4C4.9

## (Ready-To-Use)

<b>Availability/Contents:</b>	<u>Item #</u>	<u>Volume</u>
	A00087-0002	2 ml
	A00087-0007	7 ml
	A00087-0025	25 ml

**Description:**

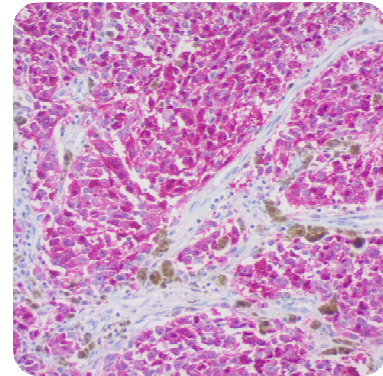
Species:	Mouse
Immunogen:	Purified bovine brain S100 protein
Clone:	4C4.9
Isotype:	IgG2a, kappa
Entrez Gene ID:	6271 (Human); 431787 (Cow); 20193 (Mouse); 295214 (Rat)
Hu Chromosome Loc.:	1q21.3
Synonyms:	Bpb; NEF; S100-A1; S100 Alpha Chain; S100 Beta Chain; S100 Calcium Binding Protein A1; S100 Calcium Binding Protein B; S100 Calcium Binding Protein Beta Neural
Mol. Weight of Antigen:	10-12kDa
Format:	This antibody has been pretitered and quality controlled to work on formalin-fixed paraffin-embedded as well as acetone fixed cryostat tissue sections. No further titration is required.
Specificity:	S-100 protein has been found in normal melanocytes, Langerhans cells, histiocytes, chondrocytes, lipocytes, skeletal and cardiac muscle, Schwann cells, epithelial and myoepithelial cells of the breast, salivary and sweat glands, as well as in glial cells. Neoplasms derived from these cells also express S-100 protein, albeit non-uniformly. A large number of well-differentiated tumors of the salivary gland, adipose and cartilaginous tissue, and Schwann cell-derived tumors express S-100 protein. Almost all malignant melanomas and cases of histiocytosis X are positive for S-100 protein.
Background:	S100 belongs to the family of calcium binding proteins. S100A and S100B proteins are two members of the S100 family. S100A is composed of an alpha and beta chain whereas S100B is composed of two beta chains. Despite the fact that S-100 protein is a ubiquitous substance, its demonstration is of great value in the identification of several neoplasms, particularly melanomas and their metastases.
Species Reactivity:	Human, Mouse, Rat, Cow. Others not known.
Positive Control:	Brain and Melanoma.
Cellular Localization:	Cytoplasmic
Titer/ Working Dilution:	No further dilution is required.
Microbiological State:	This product is not sterile.

Storage: 2° C  8° C

 ScyTek Laboratories, Inc.  
205 South 600 West  
Logan, UT 84321  
U.S.A.

**CE**  
EC REP  
Emergo Europe  
Prinsessegracht 20  
2514 AP The Hague, The Netherlands

**Uses/Limitations:** Not to be taken internally.  
 For Research Use Only.  
 This product is intended for qualitative immunohistochemistry with normal and neoplastic formalin-fixed, paraffin-embedded tissue sections, to be viewed by light microscopy.  
 Do not use if reagent becomes cloudy.  
 Do not use past expiration date.  
 Non-Sterile.



Formalin-fixed, paraffin-embedded human melanoma stained with S100; Clone 4C4.9.

**Ordering Information and Current Pricing at [www.scytek.com](http://www.scytek.com)**


**Procedure:**


1. **Tissue Section Pretreatment (Highly Recommended):** Staining of formalin fixed, paraffin embedded tissue sections is significantly enhanced by pretreatment with Citrate Plus (ScyTek catalog# CPL500).
2. **Primary Antibody Incubation Time:** We suggest an incubation period of 30 minutes at room temperature. However, depending upon the fixation conditions and the staining system employed, optimal incubation should be determined by the user.
3. **Visualization:** For maximum staining intensity we recommend the “UltraTek HRP Anti-Polyvalent Lab Pack” (ScyTek catalog# UHP125, see IFU for instructions) combined with the “DAB Chromogen/Substrate Bulk Pack (High Contrast)” (ScyTek catalog# ACV500, see IFU for instructions).

**Precautions:** Contains Sodium Azide as a preservative (0.09% w/v).  
 Do not pipette by mouth.  
 Avoid contact of reagents and specimens with skin and mucous membranes.  
 Avoid microbial contamination of reagents or increased nonspecific staining may occur.  
 This product contains no hazardous material at a reportable concentration according to U.S. 29 CFR 1910.1200, OSHA Hazardous Communication Standard and EC Directive 91/155/EC.

**References:**

1. Pierini A, Cinti F, Binanti D, Pisani G. Primary leiomyosarcoma of the jugular vein in a dog. Open Veterinary Journal. 2017;7(1):61-4.
2. Kuru M, Beytut E, Kaya S, Karakurt E, Kacar C. Vaginal Fibrosarcoma in a Brown Swiss Cow. Ataturk Universitesi Vet. Bil. Derg. 2016; 11(3): pg 327-331.
3. Altun A, Saraydin SU, Soylu S, Inan DS, Yasti C, Ozdenkaya Y, Koksall B, Duger C, Isbir C, Turan M. Chemopreventive Effects of Hydatid Disease on Experimental Breast Cancer. Asian Pacific Journal of Cancer Prevention. 2015;16(4):1391-5.
4. Güler B, Özyılmaz F, Tokuç B, Can N, Taştekin E. Histopathological Features of Gastrointestinal Stromal Tumors and the Contribution of DOG1 Expression to the Diagnosis. Balkan medical journal. 2015 Oct;32(4):388.
5. Basaran R, Kaksi M, Gur E, Efendioğlu M, Balkuv E, Sav A. Monostotic fibrous dysplasia involving occipital bone: a case report and review of literature. The Pan African medical journal. 2014;19.
6. Ersoy O, Sekmen U, Goksel S, Hamzaoglu H, Paksoy M. Schwannoma in Ascending Colon: A Rare Cause of Abdominal Pain. Case Reports in Clinical Medicine. 2014 May 12;2014.
7. Gündüz M, Yurtçu M, Toy H, Abasiyanik A, Demirci Ş. Immunohistochemical and morphometric evaluation of neuronal dysfunction in pelviureteral junction obstruction. Journal of pediatric urology. 2013 Jun 30;9(3):359-63.

Storage: 2° C  8° C



ScyTek Laboratories, Inc.  
 205 South 600 West  
 Logan, UT 84321  
 U.S.A.

CE

EMERGO  
 Emergo Europe  
 Prinsessegracht 20  
 2514 AP The Hague, The Netherlands

Instructions For Use  
A00087-IFU-RUO

Rev. Date: June 5, 2017


Revision: 3


Page 3 of 3

P.O. Box 3286 - Logan, Utah 84323, U.S.A. - Tel. (800) 729-8350 – Tel. (435) 755-9848 - Fax (435) 755-0015 - [www.scytek.com](http://www.scytek.com)

**Warranty:**

No products or “Instructions For Use (IFU)” are to be construed as a recommendation for use in violation of any patents. We make no representations, warranties or assurances as to the accuracy or completeness of information provided on our IFU or website. Our warranty is limited to the actual price paid for the product. ScyTek Laboratories, Inc. is not liable for any property damage, personal injury, time or effort or economic loss caused by our products. Immunohistochemistry is a complex technique involving both histological and immunological detection methods. Tissue processing and handling prior to immunostaining can cause inconsistent results. Variations in fixation and embedding or the inherent nature of the tissue specimen may cause variations in results. Endogenous peroxidase activity or pseudoperoxidase activity in erythrocytes and endogenous biotin may cause non-specific staining depending on detection system used.

Storage: 2° C  8° C



ScyTek Laboratories, Inc.  
205 South 600 West  
Logan, UT 84321  
U.S.A.

CE

EC REP

Emergo Europe  
Prinsessegracht 20  
2514 AP The Hague, The Netherlands