



SZABO SCANDIC

Part of Europa Biosite

Produktinformation



Forschungsprodukte & Biochemikalien



Zellkultur & Verbrauchsmaterial



Diagnostik & molekulare Diagnostik



Laborgeräte & Service

Weitere Information auf den folgenden Seiten!
See the following pages for more information!



Lieferung & Zahlungsart

siehe unsere [Liefer- und Versandbedingungen](#)

Zuschläge

- Mindermengenzuschlag
- Trockeneiszuschlag
- Gefahrgutzuschlag
- Expressversand

SZABO-SCANDIC HandelsgmbH

Quellenstraße 110, A-1100 Wien

T. +43(0)1 489 3961-0

F. +43(0)1 489 3961-7

mail@szabo-scandic.com

www.szabo-scandic.com

[linkedin.com/company/szaboscandic](https://www.linkedin.com/company/szaboscandic) 

MART-1; Clone M2-7C10 (Ready-To-Use)

Availability/Contents:	<u>Item #</u>	<u>Volume</u>
	A00115-0002	2 ml
	A00115-0007	7 ml
	A00115-0025	25 ml

Description:

Species: Mouse

Immunogen: Recombinant human MART-1 protein was used to generate the MART-1 antibody.

Clone: M2-7C10

Isotype: Mouse IgG2b, Kappa

Format: This antibody has been pretitered and quality controlled to work on formalin-fixed paraffin-embedded as well as acetone fixed cryostat tissue sections. No further titration is required.

Specificity: The clone M2-7C10 MART-1 antibody labels melanomas and other tumors showing melanocyte differentiation.

Background: MART-1 (Melanoma Antigen Recognized by T cells 1), also known as Melan-A, is an 18 kDa melanocyte differentiation antigen recognized by autologous cytotoxic T lymphocytes. MART-1 is expressed in melanosomes and the endoplasmic reticulum. MART-1 is the most widely used marker for identifying malignant melanoma, the most deadly form of skin cancer, and facilitating complete removal of the primary tumor (Campoli, 2012). In this regard, MART-1 is used both as a confirmatory marker for melanocyte differentiation in S100 (protein present in melanocytes) positive lesions and a primary marker to evaluate the extent of melanocyte tumors (Ohsie, 2012, Collins, 2012). MART-1 specific monoclonal antibodies have high sensitivity (75-92%) and specificity (95-100%) for melanoma (Campoli, 2012, Oshie et.al, 2012).
The clone M2-7C10 MART-1 antibody labels melanomas and other tumors showing melanocyte differentiation, and is widely used for assessing melanomas (Campoli, 2012, Ohsie, 2012, Collins, 2012). Analysis of melanoma lesions with this antibody shows that there is significant heterogeneity of expression of MART-1 both as a percentage of cells and in intensity of expression (Marincola, 1996). The reactivity of the MART-1 antibody is not restricted to melanoma, and the antibody has also been shown to label some mesenchymal tumors and sarcomas (Campoli, 2012).
The exact eptiope recognized by this MART-1 antibody has not been mapped. However, the MART-1 epitope recognized by this antibody appears to be different from that recognized by the M2-9E3 MART-1 antibody clone (Kawakami, 1997). Researchers often use more than one antibody against a given specificity to help follow up and validate results. Hence, it may be useful to use both the A00115 and A00116 antibodies in parallel to obtain additional information about MART-1 expression.


Species Reactivity: Human. Clone M2-7C10 does not react with mouse or rat.


Positive Control: Metastatic melanoma in lymph nodes.

Cellular Localization: Cytoplasmic.

Titer/Working Dilution: No further dilution is required.

Microbiological State: This product is not sterile.

Storage: 2° C  8° C

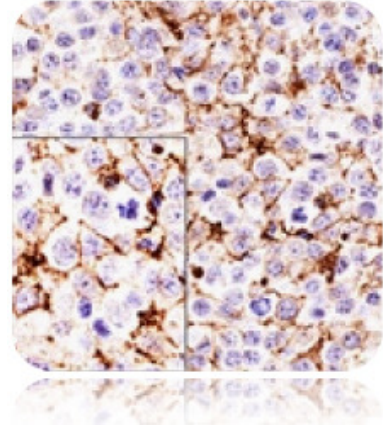


ScyTek Laboratories, Inc.
205 South 600 West
Logan, UT 84321
U.S.A.

CE

EC REP EmergoEurope (31)(0) 70 345-8570
Molsnstraat 15
2513 BH Hague, The Netherlands

Uses/Limitations: Not to be taken internally.
 For Research Use Only.
 This product is intended for qualitative immunohistochemistry with normal and neoplastic formalin-fixed, paraffin-embedded tissue sections, to be viewed by light microscopy.
 Do not use if reagent becomes cloudy.
 Do not use past expiration date.
 Use caution when handling reagents.
 Non-Sterile.



Ordering Information and Current Pricing at www.scytek.com


Procedure:


1. **Tissue Section Pretreatment:** Staining of formalin fixed, paraffin embedded tissue sections is enhanced by pretreatment with Citrate Plus (ScyTek catalog# CPL500) or Citrate Buffer (10x), pH 6.0 (ScyTek Catalog# CBB500, see IFU for instructions).
2. **Primary Antibody Incubation Time:** We suggest an incubation period of 30 minutes at room temperature. However, depending upon the fixation conditions and the staining system employed, optimal incubation should be determined by the user.
3. **Visualization:** For maximum staining intensity we recommend the “UltraTek HRP Anti-Polyvalent Lab Pack” (ScyTek catalog# UHP125, see IFU for instructions) combined with the “DAB Chromogen/Substrate Bulk Pack (High Contrast)” (ScyTek catalog# ACV500, see IFU for instructions).

Precautions: Contains Sodium Azide as a preservative (0.09% w/v).
 Do not pipette by mouth.
 Avoid contact of reagents and specimens with skin and mucous membranes.
 Avoid microbial contamination of reagents or increased nonspecific staining may occur.
 This product contains no hazardous material at a reportable concentration according to U.S. 29 CFR 1910.1200, OSHA Hazardous Communication Standard and EC Directive 91/155/EC.

References:

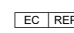
1. Marincola FM et al. 19:192-205 J Immunother 19:192-205 (1996).
2. Kawakami Y et al. J Immunol Methods 202:13-25 (1997).
3. Campoli et al. Mohs Micrographic Surgery for the Treatment of Cutaneous Melanoma. In: Mohs Micrographic Surgery. Nouri K (Editor) 211-223 (2012), DOI: 10.1007/978-1-4471-2152-7_18
4. Ohsie et al. Tissue-Based Protein Biomarkers in Melanoma: Immunohistochemistry: (A) Diagnosis. In Diagnostic and Prognostic Biomarkers and Therapeutic Targets in Melanoma Current Clinical Pathology, Murphy MJ (Editor). 159-176 (2012), 159-176, DOI: 10.1007/978-1-60761-433-3_12.
5. Collins et al. J Cutan Pathol 39:637-643 (2012).
6. Hoashi et al. JBC 380:14006-14016 (2005).
7. Mihic-Probst et al. PLoS ONE PLoS ONE 7: e33571 (2012). doi:10.1371/journal.pone.0033571.

Storage: 2° C  8° C




ScyTek Laboratories, Inc.
 205 South 600 West
 Logan, UT 84321
 U.S.A.




 EmergoEurope (31)(0) 70 345-8570
 Molsnstraat 15
 2513 BH Hague, The Netherlands

Warranty:

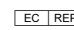
No products or “Instructions For Use (IFU)” are to be construed as a recommendation for use in violation of any patents. We make no representations, warranties or assurances as to the accuracy or completeness of information provided on our IFU or website. Our warranty is limited to the actual price paid for the product. ScyTek Laboratories, Inc. is not liable for any property damage, personal injury, time or effort or economic loss caused by our products. Immunohistochemistry is a complex technique involving both histological and immunological detection methods. Tissue processing and handling prior to immunostaining can cause inconsistent results. Variations in fixation and embedding or the inherent nature of the tissue specimen may cause variations in results. Endogenous peroxidase activity or pseudoperoxidase activity in erythrocytes and endogenous biotin may cause non-specific staining depending on detection system used.

Storage: 2° C  8° C



ScyTek Laboratories, Inc.
205 South 600 West
Logan, UT 84321
U.S.A.

CE

 EmergoEurope (31)(0) 70 345-8570
Molsnstraat 15
2513 BH Hague, The Netherlands