



# SZABO SCANDIC

Part of Europa Biosite

## Produktinformation



Forschungsprodukte & Biochemikalien



Zellkultur & Verbrauchsmaterial



Diagnostik & molekulare Diagnostik



Laborgeräte & Service

Weitere Information auf den folgenden Seiten!  
See the following pages for more information!



### Lieferung & Zahlungsart

siehe unsere [Liefer- und Versandbedingungen](#)

### Zuschläge

- Mindermengenzuschlag
- Trockeneiszuschlag
- Gefahrgutzuschlag
- Expressversand

### SZABO-SCANDIC HandelsgmbH

Quellenstraße 110, A-1100 Wien

T. +43(0)1 489 3961-0

F. +43(0)1 489 3961-7

[mail@szabo-scandic.com](mailto:mail@szabo-scandic.com)

[www.szabo-scandic.com](http://www.szabo-scandic.com)

[linkedin.com/company/szaboscandic](https://www.linkedin.com/company/szaboscandic) 

# Brilliant Cresyl Blue (1.5% in 0.85% Saline)

**Description:** Brilliant Cresyl Blue (1.5% in 0.85% Saline) is a supravital hematology stain for counting reticulocytes in peripheral blood smears. The number of reticulocytes in the blood is a simple measure of erythropoietic performance. Reticulocytes are immature erythrocytes that contain nuclear remnants of basophilic ribonucleoproteins which decreases as the reticulocyte matures. When stained, reticulocytes appear to contain dark blue granules or filaments.

**Expected Results**

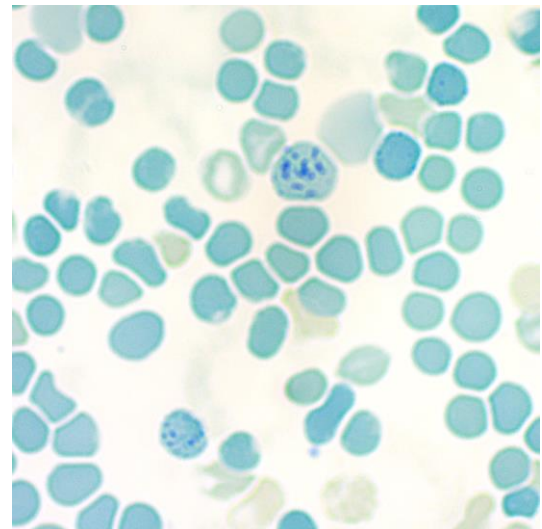
Reticulocytes:	Blue/Green with Dark Blue Granules.
Erythrocytes:	Blue/Green
Leukocyte:	Light Blue

**Uses/Limitations:**

- Not to be taken internally.
- For Research Use Only.
- Histological applications.
- Do not use if reagent precipitates.
- Do not use past expiration date.
- Use caution when handling reagents.
- Non-Sterile.

**Control Tissue:** Blood


Ordering Information and Current Pricing at [www.scytek.com](http://www.scytek.com)




<b>Availability:</b>	<u>Item #</u>	<u>Volume</u>
	BCS500	500ml
	BCS999	1000ml
	BCS3800	1 Gallon

**Precautions:**

- Avoid contact with skin and eyes.
- Harmful if swallowed.
- Follow all Federal, State, and local regulations regarding disposal.

Storage: 18° C  25° C

 ScyTek Laboratories, Inc.  
205 South 600 West  
Logan, UT 84321  
U.S.A.

**CE**  
EC REP  
Emergo Europe  
Prinsessegracht 20  
2514 AP The Hague, The Netherlands

# Instructions For Use

## BCS-IFU-RUO

Rev. Date: 4/27/20

Revision: 2

Page 2 of 2

P.O. Box 3286 - Logan, Utah 84323, U.S.A. - Tel. (800) 729-8350 – Tel. (435) 755-9848 - Fax (435) 755-0015 - [www.scytek.com](http://www.scytek.com)

### Working Solution Notes:

- Brilliant Cresyl Blue (1.5% in 0.85% Saline) may be used as is or diluted with physiological saline (0.85% w/v saline in deionized water) to suit staining intensity preferences. Working diluted stain should be used right away.
  - o Physiological saline solution: Add 8.5g of Sodium chloride to 1L deionized water.
- Filter solution before use if excess stain precipitate is seen.

### Procedure (Glass Tube):

1. Pipette a volume of Brilliant Cresyl Blue in the bottom of a glass tube followed by an equal volume of uncoagulated blood and mix well.
2. Incubate mixture for 5-15 minutes in a warm water bath.
3. Mix well prior to preparing smear.
4. Prepare 2-3 glass slide smears and let dry.
5. Clear slide and mount in synthetic resin
6. Count per standard procedure

### Procedure (Glass Slide):

1. Pipette a volume of Brilliant Cresyl Blue in the bottom of a glass slide followed by an equal volume of uncoagulated blood and mix well.
2. Place immediately in a warm humidity chamber and incubate mixture for 5-15 minutes.
3. Mix well prior to preparing smear.
4. Prepare smear and let dry.
5. Clear slide and mount in synthetic resin.
6. Count per standard procedure

Storage: 18° C



25° C

ScyTek Laboratories, Inc.  
205 South 600 West  
Logan, UT 84321  
U.S.A.

EC REP

Emergo Europe  
Prinsessegracht 20  
2514 AP The Hague, The Netherlands