



# SZABO SCANDIC

Part of Europa Biosite

## Produktinformation



Forschungsprodukte & Biochemikalien



Zellkultur & Verbrauchsmaterial



Diagnostik & molekulare Diagnostik



Laborgeräte & Service

Weitere Information auf den folgenden Seiten!  
See the following pages for more information!



### Lieferung & Zahlungsart

siehe unsere [Liefer- und Versandbedingungen](#)

### Zuschläge

- Mindermengenzuschlag
- Trockeneiszuschlag
- Gefahrgutzuschlag
- Expressversand

### SZABO-SCANDIC HandelsgmbH

Quellenstraße 110, A-1100 Wien

T. +43(0)1 489 3961-0

F. +43(0)1 489 3961-7

[mail@szabo-scandic.com](mailto:mail@szabo-scandic.com)


[www.szabo-scandic.com](http://www.szabo-scandic.com)

[linkedin.com/company/szaboscandic](https://www.linkedin.com/company/szaboscandic) 

# IgG (Immunoglobulin Gamma Heavy Chain) (B-Cell Marker); Clone B33/20 (Concentrate)

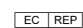
<b>Availability/Contents:</b>	<u>Item #</u>	<u>Volume</u>
<b>Description:</b>	RA0142-C.5	0.5 ml
Species:	Mouse	
Immunogen:	Purified human Ig Gamma Chain	
Clone:	B33/20	
Isotype:	IgG1, kappa	
Entrez Gene ID:	3500 (IGHG1), 3501 (IGHG2), 3502 (IGHG3), 3503 (IGHG4) (Human)	
Hu Chromosome Loc.:	14q32.33	
Synonyms:	G1m Marker; G2m Marker; G3m Marker; G4m Marker; HDC; Heavy Chain Disease Protein; Human Immunoglobulin G; Ig gamma1/2/3/4 Chain C Region; IGHG1; IGHG2; IGHG3; IGHG4; Immunoglobulin Heavy Constant Gamma 1/2/3/4	
Mol. Weight of Antigen:	75kDa	
Format:	200µg/ml of Ab purified from Bioreactor Concentrate by Protein A/G. Prepared in 10mM PBS with 0.05% BSA & 0.05% azide.	
Specificity:	Recognizes a protein of 75kDa, identified as gamma heavy chain of human immunoglobulins. Its epitope maps in the CH2 domain of the Fc region of IgG. It reacts with all sub-classes of gamma chain of human immunoglobulins. It does not cross-react with alpha (IgA), mu (IgM), epsilon (IgE), or delta (IgD), heavy chains, T-cells, monocytes, granulocytes, or erythrocytes.	
Background:	This monoclonal antibody is useful in the identification of leukemias, plasmacytomas, and certain non-Hodgkin's lymphomas. The most common feature of these malignancies is the restricted expression of a single heavy chain class. Demonstration of clonality in lymphoid infiltrates indicates that the infiltrate is clonal and therefore malignant.	
Species Reactivity:	Human. Others not known.	
Positive Control:	293T, Raji or hPBL cells. Tonsil or Spleen.	
Cellular Localization:	Cytoplasm, Cell Surface and Secreted.	
Titer/ Working Dilution:	Immunohistochemistry (Frozen and Formalin-fixed): 0.5-1 µg/ml	
	Flow Cytometry:	0.5-1 µg/million cells
	Immunofluorescence:	0.5-1 µg/ml
	Western Blotting:	0.5-1 µg/ml
	Immunoprecipitation:	0.5-1 µg/500µg protein lysate
Microbiological State:	This product is not sterile.	

Storage: 2° C  8° C

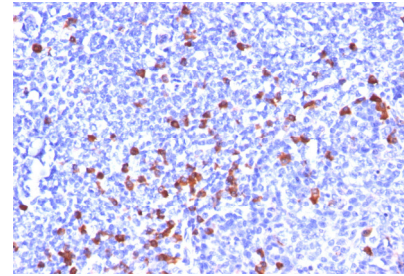


ScyTek Laboratories, Inc.  
 205 South 600 West  
 Logan, UT 84321  
 U.S.A.



 EmergoEurope (31)(0) 70 345-8570  
 Molsnstraat 15  
 2513 BH Hague, The Netherlands

**Uses/Limitations:** Not to be taken internally.  
 For Research Use Only.  
 This product is intended for qualitative immunohistochemistry with normal and neoplastic formalin-fixed, paraffin-embedded tissue sections, to be viewed by light microscopy.  
 Do not use if reagent becomes cloudy.  
 Do not use past expiration date.  
 Non-Sterile.



Formalin-paraffin human tonsil stained with IgG; Clone B33/20.


**Ordering Information and Current Pricing at [www.scytek.com](http://www.scytek.com)**


**Procedure:**

1. **Tissue Section Pretreatment (Required):** Staining of formalin fixed, paraffin embedded tissue sections is significantly enhanced by pretreatment with Citrate Plus (ScyTek catalog# CPL500).
2. **Primary Antibody Incubation Time:** We suggest an incubation period of 30 minutes at room temperature. However, depending upon the fixation conditions and the staining system employed, optimal incubation should be determined by the user.
3. **Visualization:** For maximum staining intensity we recommend the “UltraTek HRP Anti-Polyvalent Lab Pack” (ScyTek catalog# UHP125, see IFU for instructions) combined with the “DAB Chromogen/Substrate Bulk Pack (High Contrast)” (ScyTek catalog# ACV500, see IFU for instructions).

**Precautions:** Contains Sodium Azide as a preservative (0.09% w/v).  
 Do not pipette by mouth.  
 Avoid contact of reagents and specimens with skin and mucous membranes.  
 Avoid microbial contamination of reagents or increased nonspecific staining may occur.  
 This product contains no hazardous material at a reportable concentration according to U.S. 29 CFR 1910.1200, OSHA Hazardous Communication Standard and EC Directive 91/155/EC.

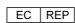
**Warranty:** No products or “Instructions For Use (IFU)” are to be construed as a recommendation for use in violation of any patents. We make no representations, warranties or assurances as to the accuracy or completeness of information provided on our IFU or website. Our warranty is limited to the actual price paid for the product. ScyTek Laboratories, Inc. is not liable for any property damage, personal injury, time or effort or economic loss caused by our products. Immunohistochemistry is a complex technique involving both histological and immunological detection methods. Tissue processing and handling prior to immunostaining can cause inconsistent results. Variations in fixation and embedding or the inherent nature of the tissue specimen may cause variations in results. Endogenous peroxidase activity or pseudoperoxidase activity in erythrocytes and endogenous biotin may cause non-specific staining depending on detection system used.

Storage: 2° C  8° C



ScyTek Laboratories, Inc.  
 205 South 600 West  
 Logan, UT 84321  
 U.S.A.



 EmergoEurope (31)(0) 70 345-8570  
 Molsnstraat 15  
 2513 BH Hague, The Netherlands