



SZABO SCANDIC

Part of Europa Biosite

Produktinformation



Forschungsprodukte & Biochemikalien



Zellkultur & Verbrauchsmaterial



Diagnostik & molekulare Diagnostik



Laborgeräte & Service

Weitere Information auf den folgenden Seiten!
See the following pages for more information!



Lieferung & Zahlungsart

siehe unsere [Liefer- und Versandbedingungen](#)

Zuschläge

- Mindermengenzuschlag
- Trockeneiszuschlag
- Gefahrgutzuschlag
- Expressversand

SZABO-SCANDIC HandelsgmbH

Quellenstraße 110, A-1100 Wien

T. +43(0)1 489 3961-0

F. +43(0)1 489 3961-7

mail@szabo-scandic.com

www.szabo-scandic.com

[linkedin.com/company/szaboscandic](https://www.linkedin.com/company/szaboscandic) 

DOG-1 / TMEM16A (Marker for Gastrointestinal Stromal Tumors); Clone DG1/447 & DOG-1.1 (Concentrate)

Availability/Contents:

<u>Item #</u>	<u>Volume</u>
RA0364-C.5	0.5 ml

Description:

Species: Mouse

Immunogen: Recombinant human DOG-1 protein (DG1/447); A synthetic peptide from human DOG-1 protein (MSDFVDWVIPDIPKDISQQIHKEKVLVVELFMREEQDKQQLLETCKMEKERQKDEPPCNHH NTKACPDSLGSPPASHAYHGGVL), conjugated to a carrier protein (DOG-1.1).

Clone: DG1/447 & DOG-1.1

Isotype: IgG1, kappa (DG1/447 & DOG-1.1)

Entrez Gene ID: 55107 (Human)

Hu Chromosome Loc.: 11q13.3

Synonyms: Anoctamin 1, Calcium Activated Chloride Channel, Discovered On Gastrointestinal Stromal Tumors Protein 1,TAOS2, ORAOV2, TMEM16A.

Mol. Weight of Antigen: ~114kDa

Format: 200µg/ml of Ab purified from Bioreactor Concentrate by Protein A/G. Prepared in 10mM PBS with 0.05% BSA & 0.05% azide.

Specificity: This monoclonal antibody recognizes Human DOG1. It is a sensitive and specific immunohistochemical marker for GIST, comparable with c-Kit, with the additional benefit of detecting c-Kit-negative GISTs. It is also a sensitive marker for unusual GIST subgroups lacking c-Kit or PDGFRA mutations.

Background: Expression of DOG-1 protein is elevated in the gastrointestinal stromal tumors (GIST's), c-Kit signaling-driven mesenchymal tumors of the GI tract. DOG-1 is rarely expressed in other soft tissue tumors, which, due to appearance, may be difficult to diagnose. Immunoreactivity for DOG-1 has been reported in 97.8% of scorable GIST's, including all c-Kit negative GIST's. Overexpression of DOG-1 has been suggested to aid in the identification of GISTs, including platelet-derived growth factor alpha receptor mutants that fail to express c-Kit antigen. The overall sensitivity of DOG1 and c-Kit in GIST's is nearly identical: 94.4% vs. 94.7%.

Species Reactivity: Human. Others not known.

Positive Control: Gastrointestinal Stromal Tumor (GIST) or testicular germ cell tumor. Melanocytes in the basal layer of the epidermis and mast cells in the dermis of normal skin.

Cellular Localization: Cell Surface and cytoplasmic

Titer/ Working Dilution: Immunohistochemistry (Frozen and Formalin-fixed): 0.5-1 µg/ml
Flow Cytometry: 0.5-1 µg/million cells
Immunofluorescence: 0.5-1 µg/ml
Western Blotting: 0.5-1 µg/ml
Immunoprecipitation: 0.5-1 µg/500µg protein lysate

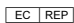
Microbiological State: This product is not sterile.

Storage: 2° C  8° C

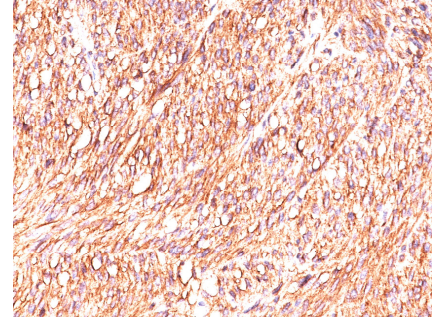


ScyTek Laboratories, Inc.
205 South 600 West
Logan, UT 84321
U.S.A.

CE

 EmergoEurope (31)(0) 70 345-8570
Molsnstraat 15
2513 BH Hague, The Netherlands

Uses/Limitations: Not to be taken internally.
For Research Use Only.
This product is intended for qualitative immunohistochemistry with normal and neoplastic formalin-fixed, paraffin-embedded tissue sections, to be viewed by light microscopy.
Do not use if reagent becomes cloudy.
Do not use past expiration date.
Non-Sterile.



Ordering Information and Current Pricing at www.scytek.com

Formalin-fixed, paraffin-embedded GIST (20X) stained with DOG1; Clone DG1/447 & DOG-1.1.

Procedure:

- Tissue Section Pretreatment (Required):** Staining of formalin fixed, paraffin embedded tissue sections is significantly enhanced by pretreatment with Citrate Plus (ScyTek catalog# CPL500).
- Primary Antibody Incubation Time:** We suggest an incubation period of 30 minutes at room temperature. However, depending upon the fixation conditions and the staining system employed, optimal incubation should be determined by the user.
- Visualization:** For maximum staining intensity we recommend the “UltraTek HRP Anti-Polyvalent Lab Pack” (ScyTek catalog# UHP125, see IFU for instructions) combined with the “DAB Chromogen/Substrate Bulk Pack (High Contrast)” (ScyTek catalog# ACV500, see IFU for instructions).

Precautions: Contains Sodium Azide as a preservative (0.09% w/v).
Do not pipette by mouth.
Avoid contact of reagents and specimens with skin and mucous membranes.
Avoid microbial contamination of reagents or increased nonspecific staining may occur.
This product contains no hazardous material at a reportable concentration according to U.S. 29 CFR 1910.1200, OSHA Hazardous Communication Standard and EC Directive 91/155/EC.


References:

- Espinosa I, et. al. Am J Surg Pathol 2008;32:210–218.

Warranty:

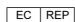
No products or “Instructions For Use (IFU)” are to be construed as a recommendation for use in violation of any patents. We make no representations, warranties or assurances as to the accuracy or completeness of information provided on our IFU or website. Our warranty is limited to the actual price paid for the product. ScyTek Laboratories, Inc. is not liable for any property damage, personal injury, time or effort or economic loss caused by our products. Immunohistochemistry is a complex technique involving both histological and immunological detection methods. Tissue processing and handling prior to immunostaining can cause inconsistent results. Variations in fixation and embedding or the inherent nature of the tissue specimen may cause variations in results. Endogenous peroxidase activity or pseudoperoxidase activity in erythrocytes and endogenous biotin may cause non-specific staining depending on detection system used.

Storage: 2° C  8° C



ScyTek Laboratories, Inc.
205 South 600 West
Logan, UT 84321
U.S.A.

CE

 EmergoEurope (31)(0) 70 345-8570
Molsnstraat 15
2513 BH Hague, The Netherlands