



SZABO SCANDIC

Part of Europa Biosite

Produktinformation



Forschungsprodukte & Biochemikalien



Zellkultur & Verbrauchsmaterial



Diagnostik & molekulare Diagnostik



Laborgeräte & Service

Weitere Information auf den folgenden Seiten!
See the following pages for more information!



Lieferung & Zahlungsart

siehe unsere [Liefer- und Versandbedingungen](#)

Zuschläge

- Mindermengenzuschlag
- Trockeneiszuschlag
- Gefahrgutzuschlag
- Expressversand

SZABO-SCANDIC HandelsgmbH

Quellenstraße 110, A-1100 Wien

T. +43(0)1 489 3961-0

F. +43(0)1 489 3961-7


mail@szabo-scandic.com


www.szabo-scandic.com

[linkedin.com/company/szaboscandic](https://www.linkedin.com/company/szaboscandic) 

hCG Holo (Pregnancy & Choriocarcinoma Marker); Clone HCGab/52 (Concentrate)

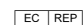
Availability/Contents:	<u>Item #</u>	<u>Volume</u>
	RA0399-C.5	0.5 ml
Description:		
Species:	Mouse	
Immunogen:	Purified hCG protein	
Clone:	HCGab/52	
Isotype:	IgG1, kappa	
Entrez Gene ID:	1081 & 1082 (Human)	
Hu Chromosome Loc.:	CGA (hCG-alpha) & CGB (hCG-beta)	
Synonyms:	CG-alpha; CGA; Chorionic Gonadotrophin Alpha; Follicle Stimulating Hormone Alpha; Follitropin Alpha; FSH-alpha; FSHA; GPH Alpha; GPHA1; LHA; LH-alpha; Luteinizing Hormone Alpha; Lutropin Alpha; Thyroid Stimulating Hormone Alpha; Thyrotropin Alpha; TSHA; CG-beta; CGB3; CGB5; CGB7; CGB8; Choriogonadotropin Subunit beta; hCGB	
Mol. Weight of Antigen:	~35kDa (intact hCG)	
Format:	200µg/ml of Ab purified from Bioreactor Concentrate by Protein A/G. Prepared in 10mM PBS with 0.05% BSA & 0.05% azide.	
Specificity:	This antibody is very specific because it reacts ONLY with intact hCG and not with either the free alpha- or free beta-chain of hCG.	
Background:	hCG is a glycoprotein and is composed of two non-identical, non-covalently linked polypeptide chains designated as the alpha and beta subunits. The alpha subunit is identical to that of thyroid stimulating hormone (TSH), follicle stimulating hormone (FSH), and luteinizing hormone (LH). hCG is secreted in large quantities by normal trophoblasts. It is present only in trace amounts in non-pregnant urine and sera, but rises sharply during pregnancy. Anti-hCG detects cells and tumors of trophoblastic origin such as choriocarcinoma. Large cell carcinoma and adenocarcinoma of the lung demonstrate anti-hCG positivity in 90% and 60% of cases, respectively. Twenty percent of lung squamous cell carcinomas are positive. hCG expression by non-trophoblastic tumors may indicate aggressive behavior.	
Species Reactivity:	Human. Others not known.	
Positive Control:	JAR or TT Cells. Placenta.	
Cellular Localization:	Cytoplasmic, Secreted	
Titer/ Working Dilution:	Immunohistochemistry (Formalin-fixed):	0.5-1 µg/ml
	Western Blotting (non-reducing):	0.5-1 µg/ml
Microbiological State:	This product is not sterile.	

Storage: 2° C  8° C

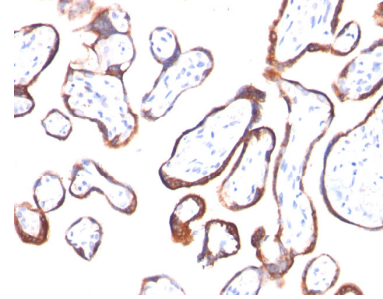


ScyTek Laboratories, Inc.
 205 South 600 West
 Logan, UT 84321
 U.S.A.



 EmergoEurope (31)(0) 70 345-8570
 Molsnstraat 15
 2513 BH Hague, The Netherlands

Uses/Limitations: Not to be taken internally.
 For Research Use Only.
 This product is intended for qualitative immunohistochemistry with normal and neoplastic formalin-fixed, paraffin-embedded tissue sections, to be viewed by light microscopy.
 Do not use if reagent becomes cloudy.
 Do not use past expiration date.
 Non-Sterile.



Formalin-fixed, paraffin-embedded human placenta stained with hCG; Clone HCGab/52. Note membrane staining.

Ordering Information and Current Pricing at www.scytek.com

Procedure:

1. **Tissue Section Pretreatment (Required):** Staining of formalin fixed, paraffin embedded tissue sections is significantly enhanced by pretreatment with Citrate Plus (ScyTek catalog# CPL500).
2. **Primary Antibody Incubation Time:** We suggest an incubation period of 30 minutes at room temperature. However, depending upon the fixation conditions and the staining system employed, optimal incubation should be determined by the user.
3. **Visualization:** For maximum staining intensity we recommend the “UltraTek HRP Anti-Polyvalent Lab Pack” (ScyTek catalog# UHP125, see IFU for instructions) combined with the “DAB Chromogen/Substrate Bulk Pack (High Contrast)” (ScyTek catalog# ACV500, see IFU for instructions).

Precautions: Contains Sodium Azide as a preservative (0.09% w/v).
 Do not pipette by mouth.
 Avoid contact of reagents and specimens with skin and mucous membranes.
 Avoid microbial contamination of reagents or increased nonspecific staining may occur.
 This product contains no hazardous material at a reportable concentration according to U.S. 29 CFR 1910.1200, OSHA Hazardous Communication Standard and EC Directive 91/155/EC.


References:


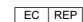
1. McDonald EA et. al. Endocrinology 150:4358-65 (2009).

Warranty:

No products or “Instructions For Use (IFU)” are to be construed as a recommendation for use in violation of any patents. We make no representations, warranties or assurances as to the accuracy or completeness of information provided on our IFU or website. Our warranty is limited to the actual price paid for the product. ScyTek Laboratories, Inc. is not liable for any property damage, personal injury, time or effort or economic loss caused by our products. Immunohistochemistry is a complex technique involving both histological and immunological detection methods. Tissue processing and handling prior to immunostaining can cause inconsistent results. Variations in fixation and embedding or the inherent nature of the tissue specimen may cause variations in results. Endogenous peroxidase activity or pseudoperoxidase activity in erythrocytes and endogenous biotin may cause non-specific staining depending on detection system used.

Storage: 2° C  8° C

 ScyTek Laboratories, Inc.
 205 South 600 West
 Logan, UT 84321
 U.S.A.

  EmergoEurope (31)(0) 70 345-8570
 Molsnstraat 15
 2513 BH Hague, The Netherlands