



SZABO SCANDIC

Part of Europa Biosite

Produktinformation



Forschungsprodukte & Biochemikalien



Zellkultur & Verbrauchsmaterial



Diagnostik & molekulare Diagnostik



Laborgeräte & Service

Weitere Information auf den folgenden Seiten!
See the following pages for more information!



Lieferung & Zahlungsart

siehe unsere [Liefer- und Versandbedingungen](#)

Zuschläge

- Mindermengenzuschlag
- Trockeneiszuschlag
- Gefahrgutzuschlag
- Expressversand

SZABO-SCANDIC HandelsgmbH

Quellenstraße 110, A-1100 Wien

T. +43(0)1 489 3961-0

F. +43(0)1 489 3961-7

mail@szabo-scandic.com

www.szabo-scandic.com

[linkedin.com/company/szaboscandic](https://www.linkedin.com/company/szaboscandic) 

Chromogranin A / CHGA (Neuroendocrine Marker); Clone SPM585 (Concentrate)

| | | |
|-------------------------------|----------------------|----------------------|
| Availability/Contents: | <u>Item #</u> | <u>Volume</u> |
| | RA0513-C.1 | 0.1 ml |
| | RA0513-C.5 | 0.5 ml |
| | RA0513-C1 | 1 ml |

Description:

Species: Mouse.

Immunogen: Human pheochromocytoma.

Clone: SPM585

Isotype: IgG1, kappa.

Entrez Gene ID: 1113

Hu Chromosome Loc.: 14q32.12

Synonyms: Beta-Granin; CGA; CHGA; Chromogranin A Parathyroid Secretory Protein 1; ER-37; Pancreastatin; Parastatin; Parathyroid Secretory Protein 1; Pituitary Secretory Protein I; SP-I; Vasostatin I or II.

Mol. Weight of Antigen: 68-75kDa.

Format: 200ug/ml of Ab purified from Bioreactor Concentrate by Protein A/G. Prepared in 10mM PBS with 0.05% BSA & 0.05% azide.

Specificity: Recognizes the Chromogranin A protein.

Background: Chromogranin A is present in neuroendocrine cells throughout the body, including the neuroendocrine cells of the large and small intestine, adrenal medulla and pancreatic islets. It is an excellent marker for carcinoid tumors, pheochromocytomas, paragangliomas, and other neuroendocrine tumors. Co-expression of chromogranin A and neuron specific enolase (NSE) is common in neuroendocrine neoplasms. Reportedly, co-expression of certain keratins and chromogranin indicates neuroendocrine lineage. The presence of strong anti-chromogranin staining and absence of anti-keratin staining should raise the possibility of paraganglioma. The co-expression of chromogranin and NSE is typical of neuroendocrine neoplasms. Most pituitary adenomas and prolactinomas readily express chromogranin.


Species Reactivity: Human & monkey. Does not react with mouse & rat. Others not known.


Positive Control: PC12 cells. Adrenal gland, bowel, thyroid, pancreas, or pheochromocytoma.

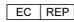
Cellular Localization: Finely granular cytoplasmic.

Titer/ Working Dilution: Immunohistochemistry (Frozen and Formalin-fixed): 0.5-1 µg/ml
 Flow Cytometry: 0.5-1 µg/million cells
 Immunofluorescence: 0.5-1 µg/ml

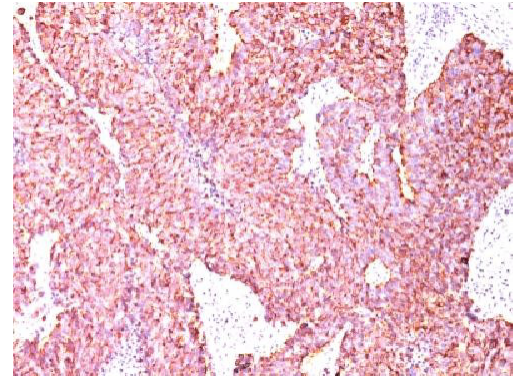
Microbiological State: This product is not sterile.

Storage: 2° C  8° C

 ScyTek Laboratories, Inc.
 205 South 600 West
 Logan, UT 84321
 U.S.A.

CE

 Emergo Europe
 Prinsessegracht 20
 2514 AP The Hague, The Netherlands

Uses/Limitations: Not to be taken internally.
 For Research Use Only.
 This product is intended for qualitative immunohistochemistry with normal and neoplastic formalin-fixed, paraffin-embedded tissue sections, to be viewed by light microscopy.
 Do not use if reagent becomes cloudy.
 Do not use past expiration date.
 Non-Sterile.



FFPE human Small Cell Lung Carcinoma stained with Chromogranin A; Clone SPM585.

Ordering Information and Current Pricing at www.scytek.com

Procedure:


1. **Tissue Section Pretreatment (Required):** Staining of formalin fixed, paraffin embedded tissue sections is significantly enhanced by pretreatment with Citrate Plus (ScyTek catalog# CPL500).
2. **Primary Antibody Incubation Time:** We suggest an incubation period of 30 minutes at room temperature. However, depending upon the fixation conditions and the staining system employed, optimal incubation should be determined by the user.
3. **Visualization:** For maximum staining intensity we recommend the “CRF Anti-Polyvalent HRP Polymer (DAB) Lab Pack” (ScyTek catalog# CPP125, see IFU for instructions), combined with the “DAB Chromogen/Substrate Bulk Pack (High Contrast)” (ScyTek catalog# ACV500, see IFU for instructions).


Precautions: Contains Sodium Azide as a preservative (0.09% w/v).
 Do not pipette by mouth.
 Avoid contact of reagents and specimens with skin and mucous membranes.
 Avoid microbial contamination of reagents or increased nonspecific staining may occur.
 This product contains no hazardous material at a reportable concentration according to U.S. 29 CFR 1910.1200, OSHA Hazardous Communication Standard and EC Directive 91/155/EC.

References:

1. Bruke et. al. Am J Surg Pathol 13: 828, 1989.2. Delagi et. al. Mol Cell Probe 3: 87, 1989.

Warranty: No products or “Instructions For Use (IFU)” are to be construed as a recommendation for use in violation of any patents. We make no representations, warranties or assurances as to the accuracy or completeness of information provided on our IFU or website. Our warranty is limited to the actual price paid for the product. ScyTek Laboratories, Inc. is not liable for any property damage, personal injury, time or effort or economic loss caused by our products. Immunohistochemistry is a complex technique involving both histological and immunological detection methods. Tissue processing and handling prior to immunostaining can cause inconsistent results. Variations in fixation and embedding or the inherent nature of the tissue specimen may cause variations in results. Endogenous peroxidase activity or pseudoperoxidase activity in erythrocytes and endogenous biotin may cause non-specific staining depending on detection system used.

Storage: 2° C  8° C



ScyTek Laboratories, Inc.
 205 South 600 West
 Logan, UT 84321
 U.S.A.

CE

EC REP

Emergo Europe
 Prinsessegracht 20
 2514 AP The Hague, The Netherlands