



SZABO SCANDIC

Part of Europa Biosite

Produktinformation



Forschungsprodukte & Biochemikalien



Zellkultur & Verbrauchsmaterial



Diagnostik & molekulare Diagnostik



Laborgeräte & Service

Weitere Information auf den folgenden Seiten!
See the following pages for more information!



Lieferung & Zahlungsart

siehe unsere [Liefer- und Versandbedingungen](#)

Zuschläge

- Mindermengenzuschlag
- Trockeneiszuschlag
- Gefahrgutzuschlag
- Expressversand

SZABO-SCANDIC HandelsgmbH

Quellenstraße 110, A-1100 Wien

T. +43(0)1 489 3961-0

F. +43(0)1 489 3961-7

mail@szabo-scandic.com

www.szabo-scandic.com

[linkedin.com/company/szaboscandic](https://www.linkedin.com/company/szaboscandic) 

Brefeldin A

GEF inhibitor
Catalog No. SIH-225



Discovery through partnership | Excellence through quality

Overview

Product Name

Brefeldin A

Description

GEF inhibitor

Purity

>98%

CAS No.

20350-15-6

Molecular Formula

C₁₁H₁₁O₁

Molecular Weight

280.36

Properties

Storage Temperature

-20°C

Shipping Temperature

Shipped Ambient

Product Type

Inhibitor

Solubility

Soluble to 10 mM in ethanol and to 50 mM in DMSO

Source

Synthetic

Appearance

White Crystalline Solid

SMILES

C[C@H]1CCC/C=C/[C@@H]2C[C@@H](C[C@H]2[C@H](/C=C/C(=O)O1)O)O

InChI

InChI=1S/C₁₆H₂₄O₄/c1-11-5-3-2-4-6-12-9-13(17)10-14(12)15(18)7-8-16(19)20-11/h4,6-8,11-15,17-18H,2-3,5,9-10H₂,1H₃/b6-4+,

InChIKey

KQNZDYYTLMIZCT-PNFJWZTBSA-N

Safety Phrases

Classification: Harmful. May be harmful if inhaled, swallowed or absorbed through skin.

Safety Phrases:

S22 - Do not breathe dust

S24/25 - Avoid contact with skin and eyes

S36/37/39 - Wear suitable protective clothing, gloves and eye/face protection

Risk Phrases:

R68- Possible risk of irreversible effects

Hazard Phrases:

H301

Precautionary Phrases:

P301 + P310

Cite This Product

Brefeldin A (StressMarq Biosciences Inc., Victoria BC CANADA, Catalog # SIH-225)

Biological Description

Alternative Names

Cyanaein

Research Areas

Cancer, Apoptosis

PubChem ID

5287620

Scientific Background

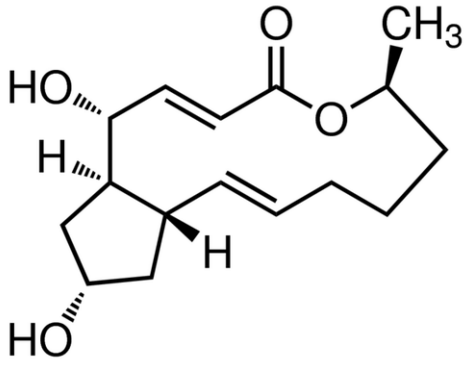
Brefeldin A is a reversible inhibitor of proteins from the endoplasmic reticulum (ER) to the golgi. In mammalian and yeast cells, Brefeldin A targets certain GTP-exchange factors responsible for activating a GTPase called Arf1p (1, 2).

References

1. Klausner R.D., Donaldson J.G., Lippincott-Schwartz J. (1992) J Cell Biol. 116(5): 1071-1080.
 2. Nebenfuhr A., Ritzenthaler C., and Robinson D.G. (2002) Plant Physiol. 130(3): 1102-1108.
-

Product Images

Chemical structure of Brefeldin A (SIH-225), a Inhibits intracellular transport. CAS #: 20350-15-6. Molecular Formula: C₁₆H₂₄O₄. Molecular Weight: 280.36 g/mol.



Product Citations (0)

Currently there are no citations for this product.

Reviews

There are no reviews yet.