



SZABO SCANDIC

Part of Europa Biosite

Produktinformation



Forschungsprodukte & Biochemikalien



Zellkultur & Verbrauchsmaterial



Diagnostik & molekulare Diagnostik



Laborgeräte & Service

Weitere Information auf den folgenden Seiten!
See the following pages for more information!



Lieferung & Zahlungsart

siehe unsere [Liefer- und Versandbedingungen](#)

Zuschläge

- Mindermengenzuschlag
- Trockeneiszuschlag
- Gefahrgutzuschlag
- Expressversand

SZABO-SCANDIC HandelsgmbH

Quellenstraße 110, A-1100 Wien

T. +43(0)1 489 3961-0

F. +43(0)1 489 3961-7

mail@szabo-scandic.com

www.szabo-scandic.com

[linkedin.com/company/szaboscandic](https://www.linkedin.com/company/szaboscandic) 

C2 Ceramide

Cell permeable ceramide analog
Catalog No. SIH-232



Discovery through partnership | Excellence through quality

Overview

Product Name

C2 Ceramide

Description

Cell permeable ceramide analog

Purity

>98%

CAS No.

3102-57-6

Molecular Formula

C₂₄H₄₄N₂O₂

Molecular Weight

341.53

Properties

Storage Temperature

-20°C

Shipping Temperature

Shipped Ambient

Product Type

Inducer

Solubility

Soluble to 100 mM in DMSO and to 100 mM in ethanol

Source

Synthetic

Appearance

White Solid

SMILES

CCCCCCCCCCCC/C=C/[C@H]([C@H](CO)NC(=O)C)O

InChI

InChI=1S/C20H39NO3/c1-3-4-5-6-7-8-9-10-11-12-13-14-15-16-20(24)19(17-22)21-18(2)23/h15-16,19-20,22,24H,3-14,17H2,1-2H3,(H,21,2

3)/b16-15+

InChIKey

BLTCBVOJNKKFKC-QUDYQQOWSA-N

Safety Phrases

Classification: Caution: Substance not yet fully tested.

Safety Phrases:

S22 - Do not breathe dust

S24/25 - Avoid contact with skin and eyes

S36/37/39 - Wear suitable protective clothing, gloves and eye/face protection

Cite This Product

C2 Ceramide (StressMarq Biosciences Inc., Victoria BC CANADA, Catalog # SIH-232)

Biological Description

Alternative Names

N-[(2S,3R,4E)-1,3-Dihydroxy-4-octadecen-2-yl]acetamide, N-Acetylsphingosine

Research Areas

Cancer, Apoptosis

PubChem ID

5497136

Scientific Background

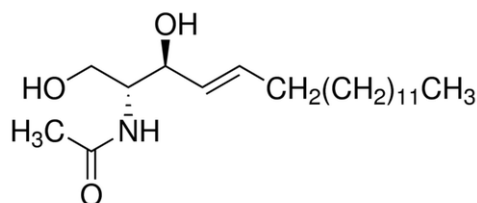
Ceramides are a family of lipid molecules that are found in high concentrations within the cell membrane. They act as a signaling molecule. It is also a potent modulator of cell proliferation and differentiation.

References

1. Haimovitz A., et al. (1994) J Exp Med. 180(2): 525-535.

Product Images

Chemical structure of C2 Ceramide (SIH-232), a Cell permeable ceramide analog.
CAS #: 3102-57-6. Molecular Formula: C₂₀H₃₉NO₃. Molecular Weight: 341.53 g/mol.



Product Citations (0)

Currently there are no citations for this product.

Reviews

There are no reviews yet.