



SZABO SCANDIC

Part of Europa Biosite

Produktinformation



Forschungsprodukte & Biochemikalien



Zellkultur & Verbrauchsmaterial



Diagnostik & molekulare Diagnostik



Laborgeräte & Service

Weitere Information auf den folgenden Seiten!
See the following pages for more information!



Lieferung & Zahlungsart

siehe unsere [Liefer- und Versandbedingungen](#)

Zuschläge

- Mindermengenzuschlag
- Trockeneiszuschlag
- Gefahrgutzuschlag
- Expressversand

SZABO-SCANDIC HandelsgmbH

Quellenstraße 110, A-1100 Wien

T. +43(0)1 489 3961-0

F. +43(0)1 489 3961-7

mail@szabo-scandic.com

www.szabo-scandic.com

[linkedin.com/company/szaboscandic](https://www.linkedin.com/company/szaboscandic) 

Amlodipine

L-type Ca channel blocker
Catalog No. SIH-315



Discovery through partnership | Excellence through quality

Overview

Product Name

Amlodipine

Description

L-type Ca channel blocker

Purity

>98%

CAS No.

111470-99-6

Molecular Formula

C₂₀H₂₅ClN₂O₅

Molecular Weight

567.05

Properties

Storage Temperature

-20°C

Shipping Temperature

Shipped Ambient

Product Type

Inhibitor

Solubility

Soluble to 100 mM in DMSO and to 10 mM in water

Source

Synthetic

Appearance

White Solid

SMILES

CCOC(=O)C1=C(NC(=C(C1C2=CC=CC=C2Cl)C(=O)OC)C)COC(=O)C

InChI

InChI=1S/C20H25ClN2O5/c1-4-28-20(25)18-15(11-27-10-9-22)23-12(2)16(19(24)26-3)17(18)13-7-5-6-8-14(13)21/h5-8,17,23H,4,9-11

InChIKey

HTIQEAQVCYTUBX-UHFFFAOYSA-N

Safety Phrases

Classification: Harmful. May be harmful if inhaled, swallowed or absorbed through skin.

Safety Phrases:

S22 - Do not breathe dust

S24/25 - Avoid contact with skin and eyes

S36/37/39 - Wear suitable protective clothing, gloves and eye/face protection

Risk Phrases:

R22 - Harmful if swallowed

R62 - Possible risk of impaired fertility

Hazard Phrases:

H302-H315-H319-H335

Precautionary Phrases:

P261-P305 + P351 + P338

Cite This Product

Amlodipine (StressMarq Biosciences Inc., Victoria BC CANADA, Catalog # SIH-315)

Biological Description

Alternative Names

3-Ethyl 5-methyl 2-[(2-aminoethoxy)methyl]-4-(2-chlorophenyl)-6-methyl-1,4-dihydro-3,5-pyridinedicarboxylate, Norvasc

Research Areas

Calcium Channels, Ion Channels, Neuroscience, Voltage-Gated Calcium Channels

PubChem ID

2162

Scientific Background

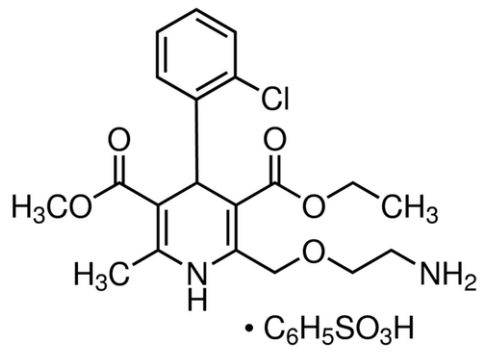
Amlodipine is a long-acting calcium channel blocker used as an anti-hypertensive and in the treatment of angina. It acts by relaxing the smooth muscle in the arterial wall, decreasing total peripheral resistance and hence reducing blood pressure.

References

1. Luksa J., Josic D., Kremser M., Kopitar Z and Milutinovic S. (1997) J Chromatography. B, Biomed Sci and App. 693(2): 367-375.
 2. Bahl V.K., Jadhav U.M., Thacker H.P. (2009) Am J Cardiovasc Drugs. 9(3): 135-142.
-

Product Images

Chemical structure of Amlodipine (SIH-315), a L-type Ca channel blocker. CAS #: 111470-99-6. Molecular Formula: $C_{20}H_{25}ClN_2O_5 \cdot C_6H_5SO_3H$. Molecular Weight: 567.05 g/mol.



Product Citations (0)

Currently there are no citations for this product.

Reviews

There are no reviews yet.