



# SZABO SCANDIC

Part of Europa Biosite

## Produktinformation



Forschungsprodukte & Biochemikalien



Zellkultur & Verbrauchsmaterial



Diagnostik & molekulare Diagnostik



Laborgeräte & Service

Weitere Information auf den folgenden Seiten!  
See the following pages for more information!



### Lieferung & Zahlungsart

siehe unsere [Liefer- und Versandbedingungen](#)

### Zuschläge

- Mindermengenzuschlag
- Trockeneiszuschlag
- Gefahrgutzuschlag
- Expressversand

### SZABO-SCANDIC HandelsgmbH

Quellenstraße 110, A-1100 Wien

T. +43(0)1 489 3961-0

F. +43(0)1 489 3961-7

[mail@szabo-scandic.com](mailto:mail@szabo-scandic.com)

[www.szabo-scandic.com](http://www.szabo-scandic.com)

[linkedin.com/company/szaboscandic](https://www.linkedin.com/company/szaboscandic) 

## Rottlerin

Autophagy inducer  
Catalog No. SIH-394



Discovery through partnership | Excellence through quality

### Overview

---

#### Product Name

Rottlerin

#### Description

Autophagy inducer

#### Purity

>98%

#### CAS No.

82-08-6

#### Molecular Formula

C<sub>11</sub>H<sub>10</sub>O<sub>1</sub>

#### Molecular Weight

516.55

### Properties

---

#### Storage Temperature

-20°C

#### Shipping Temperature

Shipped Ambient

#### Product Type

Inducer

#### Solubility

Soluble to 2 mM in ethanol and to 20 mM in DMSO.

#### Source

Synthetic

#### Appearance

Orange to brown solid.

#### SMILES

C1=CC=CC=C1/C=C/C(C2=C(C(=C(C3=C2OC(C)(C)C=C3)O)CC4=C(C(=C(C(=C4O)C(C)=O)O)C)O)O)=O

#### InChI

InChI=1S/C30H28O8/c1-15-24(33)19(27(36)22(16(2)31)25(15)34)14-20-26(35)18-12-13-30(3,4)38-29(18)23(28(20)37)21(32)11-10-17-8-6-5

## InChIKey

DEZFNHCVIZBHBI-ZHACJKMWSA-N

## Safety Phrases

Classification: Not WHMIS controlled.

Safety Phrases:

S22 - Do not breathe dust.

S24/25 - Avoid contact with skin and eyes.

S36/37/39 - Wear suitable protective clothing, gloves and eye/face protection.

## Cite This Product

Rottlerin (StressMarq Biosciences Inc., Victoria BC CANADA, Catalog # SIH-394)

## Biological Description

### Alternative Names

3'-[(8-Cinnamoyl-5,7-dihydroxy-2,2-dimethyl-2H-1-benzopyran-6-yl)methyl]-2',4',6'-trihydroxy-5'-methylacetophenone

### Research Areas

Cancer, Autophagy

### PubChem ID

5281847

### Scientific Background

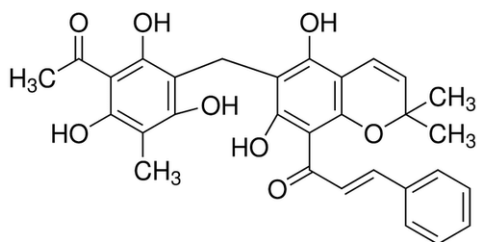
Rottlerin has been shown to inhibit protein kinase C as well as CAM kinase III. It is also a potent activator of many K<sup>+</sup> channels which are Ca<sup>2+</sup>-activated. Studies have illustrated Rottlerin to act as a mitochondrial uncoupler which depolarizes membrane potential. Lastly, Rottlerin can induce autophagy by inhibition of mTORC1 signalling.

### References

1. Gschwendt M. et al. (1994) Biochem Biophys Res Commun. 199(1): 93-8.
2. Wu S., et al. (2007) J Cell Physiol. 210(3): 655-66.
3. Soltoff S. (2001) J Biol Chem. 276(41): 37986-92.
4. Balgi A., et al. (2009) PLoS One. 4(9): e7124.

## Product Images

Chemical structure of Rottlerin (SIH-394), a Autophagy inducer. CAS #: 82-08-6.  
Molecular Formula: C<sub>30</sub>H<sub>28</sub>O<sub>8</sub>. Molecular Weight: 516.55 g/mol.



## Product Citations (0)

---

Currently there are no citations for this product.

## Reviews

---

There are no reviews yet.