



# SZABO SCANDIC

Part of Europa Biosite

## Produktinformation



Forschungsprodukte & Biochemikalien



Zellkultur & Verbrauchsmaterial



Diagnostik & molekulare Diagnostik



Laborgeräte & Service

Weitere Information auf den folgenden Seiten!  
See the following pages for more information!



### Lieferung & Zahlungsart

siehe unsere [Liefer- und Versandbedingungen](#)

### Zuschläge

- Mindermengenzuschlag
- Trockeneiszuschlag
- Gefahrgutzuschlag
- Expressversand

### SZABO-SCANDIC HandelsgmbH

Quellenstraße 110, A-1100 Wien

T. +43(0)1 489 3961-0

F. +43(0)1 489 3961-7

[mail@szabo-scandic.com](mailto:mail@szabo-scandic.com)

[www.szabo-scandic.com](http://www.szabo-scandic.com)

[linkedin.com/company/szaboscandic](https://www.linkedin.com/company/szaboscandic) 

## C8 Ceramide

Protein kinase activator  
Catalog No. SIH-499



Discovery through partnership | Excellence through quality

### Overview

---

#### Product Name

C8 Ceramide

#### Description

Protein kinase activator

#### Purity

>98% (TLC)

#### CAS No.

74713-59-0

#### Molecular Formula

C<sub>18</sub>H<sub>34</sub>N<sub>2</sub>O<sub>2</sub>

#### Molecular Weight

425.7

### Properties

---

#### Storage Temperature

-20°C

#### Shipping Temperature

Shipped Ambient

#### Product Type

Activator

#### Solubility

Soluble in DMSO (25 mg/ml) or 100% ethanol (25 mg/ml)

#### Source

Synthetic

#### Appearance

White waxy solid

#### SMILES

CCCCCCCCCCCC/C=C/[C@H]([C@H](CO)NC(=O)CCCCCCC)O

#### InChI

InChI=1S/C<sub>26</sub>H<sub>51</sub>N<sub>2</sub>O<sub>3</sub>/c1-3-5-7-9-10-11-12-13-14-15-16-18-19-21-25(29)24(23-28)27-26(30)22-20-17-8-6-4-2/h19,21,24-25,28-29H,3-18,

## InChIKey

APDLCSPGWPLYEQ-WRBRXSDHSA-N

## Safety Phrases

Classification:

Not a hazardous substance or mixture.

Safety Phrases:

S22 - Do not breathe dust.

S24/25 - Avoid contact with skin and eyes.

S36/37/39 - Wear suitable protective clothing, gloves and eye/face protection.

## Cite This Product

C8 Ceramide (StressMarq Biosciences Inc., Victoria BC CANADA, Catalog # SIH-499)

## Biological Description

### Alternative Names

C8-Ceramide

### Research Areas

Cell Signaling

### PubChem ID

5702614

### Scientific Background

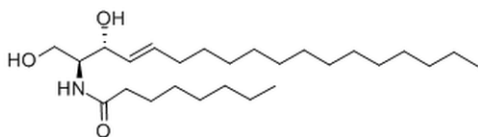
C8 Ceramide is a biologically active ceramide analog. It is a protein kinase activator. It has also been shown to induce phosphorylation of EGF, as well as, apoptosis in vitro.

### References

1. Józefowski S., et al. (2010) J. Immun. (Baltimore, Md.: 1950). 185(11): 69606973.
2. Gusain A., et al. (2012) Mol.Neurobio. 45(3): 455464.

## Product Images

Chemical structure of C8 Ceramide (SIH-499), a Protein kinase activator. CAS #: 74713-59-0. Molecular Formula: C<sub>26</sub>H<sub>51</sub>NO<sub>3</sub>. Molecular Weight: 425.7 g/mol.



## Product Citations (0)

---

Currently there are no citations for this product.

## Reviews

---

There are no reviews yet.