



# SZABO SCANDIC

Part of Europa Biosite

## Produktinformation



Forschungsprodukte & Biochemikalien



Zellkultur & Verbrauchsmaterial



Diagnostik & molekulare Diagnostik



Laborgeräte & Service

Weitere Information auf den folgenden Seiten!  
See the following pages for more information!



### Lieferung & Zahlungsart

siehe unsere [Liefer- und Versandbedingungen](#)

### Zuschläge

- Mindermengenzuschlag
- Trockeneiszuschlag
- Gefahrgutzuschlag
- Expressversand

### SZABO-SCANDIC HandelsgmbH

Quellenstraße 110, A-1100 Wien

T. +43(0)1 489 3961-0

F. +43(0)1 489 3961-7

[mail@szabo-scandic.com](mailto:mail@szabo-scandic.com)

[www.szabo-scandic.com](http://www.szabo-scandic.com)

[linkedin.com/company/szaboscandic](https://www.linkedin.com/company/szaboscandic) 

## Anti-AHA1 Antibody [25F2.D10]

Rat Anti-Mouse AHA1 Monoclonal IgG2a Kappa  
Catalog No. SMC-173



Discovery through partnership | Excellence through quality

### Overview

---

#### Product Name

AHA1 Antibody

#### Description

Rat Anti-Mouse AHA1 Monoclonal IgG2a Kappa

#### Species Reactivity

Human, Mouse, Rat

#### Applications

WB, IHC, ICC/IF, IP, ELISA

#### Antibody Dilution

WB (1:1000), IHC (1:100), ICC/IF (1:1000), IP ( 1:1000); optimal dilutions for assays should be determined by the user.

#### Host Species

Rat

#### Immunogen Species

Mouse

#### Immunogen

Mouse Aha1

#### Concentration

1.59 mg/ml

#### Conjugates

Alkaline Phosphatase, APC, ATTO 390, ATTO 488, ATTO 565, ATTO 594, ATTO 633, ATTO 655, ATTO 680, ATTO 700, Biotin, FITC, HRP, PE/ATTO 594, PerCP, RPE, Streptavidin, Unconjugated

### Properties

---

#### Storage Buffer

0.02M potassium phosphate, 0.15M sodium chloride, pH7.2

#### Storage Temperature

-20°C, 4°C

#### Shipping Temperature

Blue Ice or 4°C

#### Purification

---

Protein G Purified

---

**Clonality**

---

Monoclonal

---

**Clone Number**

---

25F2.D10

---

**Isotype**

---

IgG2a Kappa

---

**Specificity**

---

Detects ~38kDa. Can run up to 45kDa on SDS Page.

---

**Cite This Product**

---

Rat Anti-Mouse AHA1 Monoclonal, Clone 25F2.D10 (StressMarq Biosciences Inc., Victoria BC CANADA, Catalog # SMC-173)

---

**Certificate Of Analysis**

---

1 µg/ml of SMC-173 was sufficient for detection of Aha1 in 10 µg of rat tissue lysate by colorimetric immunoblot analysis using Goat anti-rat IgG:HRP as the secondary antibody.

---

**Biological Description**

---

**Alternative Names**

Aha 1 Antibody, Ahsa1 Antibody, p38 Antibody, HSPC322 Antibody, C14orf3 Antibody, Activator of HSP90 ATPase Antibody, Activator of 90 kDa heat shock protein ATPase homolog 1 Antibody

---

**Research Areas**

---

Cancer, Heat Shock, Cell Signaling, Chaperones, Trafficking

---

**Cellular Localization**

---

Cytoplasm, Endoplasmic Reticulum

---

**Accession Number**

---

NP\_666148.1

---

**Gene ID**

---

217737

---

**Swiss Prot**

---

Q8BK64

---

**Scientific Background**

---

Aha1 is a member of the HSP90 cochaperone family, and is thought to stimulate HSP90 ATPase activity by competing with p23 and other co-chaperones for HSP90 binding (1, 2). It may affect a step in the endoplasmic reticulum to Golgi trafficking. Aha1 also interacts with HSPCA/HSP90 and with the cytoplasmic tail of the vesicular stomatitis virus glycoproteins (VSV G) (3). Aha1 is expressed in numerous tissues, including the brain, heart, skeletal muscle, and kidney, and at low levels, the liver and placenta. Aha1 might be a potential therapeutic strategy to increase sensitivity to HSP inhibitors (4).

---

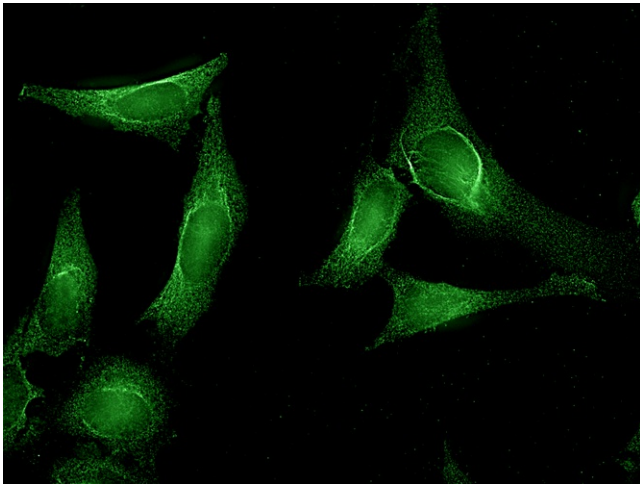
**References**

---

1. Hainzl O., Lapina M.C., Buchner J., Richter K. (2009) J Biol Chem. Epub.
2. Harst A., Lin H., Obermann W.M. (2005) Biochem J. 387 (pt.3): 789-796.

3. Lotz G.P., Brychzy A., Heinz S., Obermann W.M. (2008) J Cell Sci. 121(pt.5): 717-723.
4. Holmes J.L., Sharp S.Y., Hobbs S., Workman P. (2008) Cancer Res. 68(4): 1188-1197.

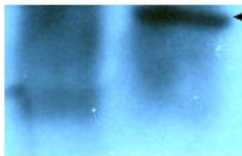
## Product Images



Immunocytochemistry/Immunofluorescence analysis using Rat Anti-Aha1 Monoclonal Antibody, Clone 25F2.D10 (SMC-173). Tissue: HeLa cells. Species: Human. Primary Antibody: Rat Anti-Aha1 Monoclonal Antibody (SMC-173) at 1:1000. Secondary Antibody: FITC Goat Anti-Rat (green).

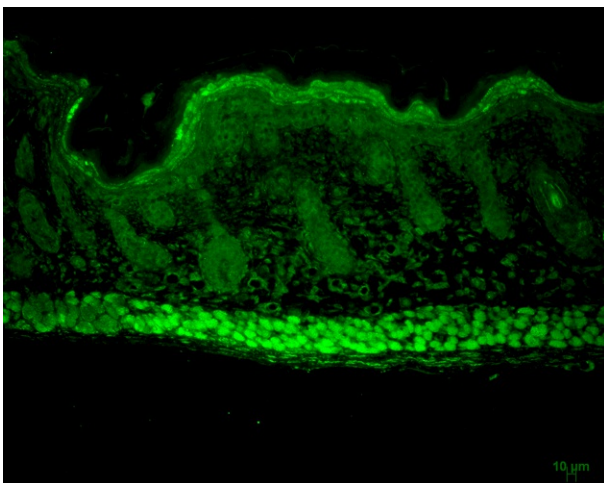
Control IP

36kD -

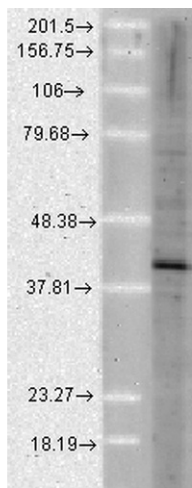


Aha1

Immunoprecipitation analysis using Rat Anti-Aha1 Monoclonal Antibody, Clone 25F2.D10 (SMC-173). Tissue: HeLa cells. Species: Human. Primary Antibody: Rat Anti-Aha1 Monoclonal Antibody (SMC-173) at 1:1000.



Immunohistochemistry analysis using Rat Anti-Aha1 Monoclonal Antibody, Clone 25F2.D10 (SMC-173). Tissue: backskin. Species: Mouse. Fixation: Bouin's Fixative and paraffin-embedded. Primary Antibody: Rat Anti-Aha1 Monoclonal Antibody (SMC-173) at 1:100 for 1 hour at RT. Secondary Antibody: FITC Goat Anti-Rat (green) at 1:50 for 1 hour at RT. Localization: Uppermost epidermis staining, and muscle.



Western Blot analysis of Human Cell lysates showing detection of Aha1 protein using Rat Anti-Aha1 Monoclonal Antibody, Clone 25F2.D10 (SMC-173). Load: 15  $\mu$ g protein. Block: 1.5% BSA for 30 minutes at RT. Primary Antibody: Rat Anti-Aha1 Monoclonal Antibody (SMC-173) at 1:1000 for 2 hours at RT. Secondary Antibody: Sheep Anti-Mouse IgG: HRP for 1 hour at RT.

## Product Citations (0)

---

Currently there are no citations for this product.

## Reviews

---

There are no reviews yet.