



SZABO SCANDIC

Part of Europa Biosite

Produktinformation



Forschungsprodukte & Biochemikalien



Zellkultur & Verbrauchsmaterial



Diagnostik & molekulare Diagnostik



Laborgeräte & Service

Weitere Information auf den folgenden Seiten!
See the following pages for more information!



Lieferung & Zahlungsart

siehe unsere [Liefer- und Versandbedingungen](#)

Zuschläge

- Mindermengenzuschlag
- Trockeneiszuschlag
- Gefahrgutzuschlag
- Expressversand

SZABO-SCANDIC HandelsgmbH

Quellenstraße 110, A-1100 Wien

T. +43(0)1 489 3961-0

F. +43(0)1 489 3961-7

mail@szabo-scandic.com

www.szabo-scandic.com

[linkedin.com/company/szaboscandic](https://www.linkedin.com/company/szaboscandic) 

Anti-MDC1 Antibody [P2B11]

Mouse Anti-Mouse MDC1 Monoclonal IgG1
Catalog No. SMC-197



Discovery through partnership | Excellence through quality

Overview

Product Name

MDC1 Antibody

Description

Mouse Anti-Mouse MDC1 Monoclonal IgG1

Species Reactivity

Human, Mouse, Bovine, Chimpanzee

Applications

WB, ICC/IF

Antibody Dilution

WB (1:2000), ICC/IF (1:100); optimal dilutions for assays should be determined by the user.

Host Species

Mouse

Immunogen Species

Mouse

Immunogen

GST-tagged recombinant protein corresponding to mouse MDC1 at and around the N-terminus

Concentration

1 mg/ml

Conjugates

Alkaline Phosphatase, APC, ATTO 390, ATTO 488, ATTO 565, ATTO 594, ATTO 633, ATTO 655, ATTO 680, ATTO 700, Biotin, FITC, HRP, PE/ATTO 594, PerCP, RPE, Streptavidin, Unconjugated

Properties

Storage Buffer

PBS pH7.4, 50% glycerol, 0.09% sodium azide

Storage Temperature

-20°C

Shipping Temperature

Blue Ice or 4°C

Purification

Protein G Purified

Clonality

Monoclonal

Clone Number

P2B11

Isotype

IgG1

Specificity

Detects ~184kDa. This antibody recognizes MDC1 at and around the N-terminus.

Cite This Product

Mouse Anti-Mouse MDC1 Monoclonal, Clone P2B11 (StressMarq Biosciences Inc., Victoria BC CANADA, Catalog # SMC-197)

Certificate Of Analysis

0.5 µg/ml of SMC-197 was sufficient for detection of MDC1 in 10 µg of HeLa cell lysate by ECL immunoblot analysis.

Biological Description

Alternative Names

Nuclear factor with BRCT domains1 Antibody, mediator of DNA damage checkpoint 1 Antibody

Research Areas

Cancer, Cell Signaling, Epigenetics, Oxidative Stress

Cellular Localization

Nucleus

Accession Number

NP_001010833.2

Gene ID

240087

Swiss Prot

Q5PSV9

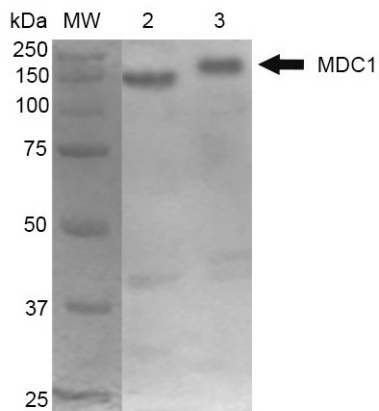
Scientific Background

MDC1, mediator of DNA damage checkpoint protein 1, plays a role in checkpoint mediated cell cycle arrest in response to DNA damage, within S phase and G2/M. It is also thought to act as a scaffold protein during recruitment of DNA repair and signal transduction proteins to discrete foci of DNA damage that are marked by phosphorylation of histone H2A.X on S139.

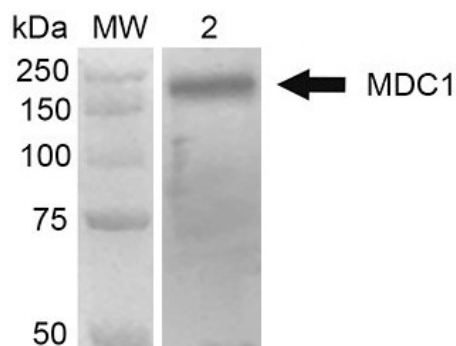
References

1. Lou Z., et al. (2004) J Biol Chem. 279(45): 46359-46362.
 2. Luo K., Yuan J, Lou Z. (2011) J Biol Chem. 286(32): 28192-28199.
 3. Strauss C., Halevy T., Macarov M., Argaman L., and Goldbery M. (2011) DNA Repair (Amst.). 10(8): 806-814.
 4. Wilson K.A., et al. (2011) Mol Cancer Res. 9(6): 766-781.
-

Product Images



Western Blot analysis of Mouse Cortex and Cerebellum showing detection of 184 kDa MDC1 protein using Mouse Anti-MDC1 Monoclonal Antibody, Clone P2B11 (SMC-197). Lane 1: MW ladder. Lane 2: Mouse Cortex. Lane 3: Mouse Cerebellum. Load: 10 μ g. Block: 5% Skim Milk in 1X TBST. Primary Antibody: Mouse Anti-MDC1 Monoclonal Antibody (SMC-197) at 1:1000 for 2 hours RT. Secondary Antibody: Goat Anti-Mouse HRP:IgG at 1:2000 for 60 min at RT. Color Development: ECL solution for 5 min in RT. Predicted/Observed Size: 184 kDa.



Western Blot analysis of Human 293Trap cell lysates showing detection of 184 kDa MDC1 protein using Mouse Anti-MDC1 Monoclonal Antibody, Clone P2B11 (SMC-197). Lane 1: MW ladder. Lane 2: 293Trap cell lysates. Load: 30 μ g. Block: 5% Skim Milk in 1X TBST. Primary Antibody: Mouse Anti-MDC1 Monoclonal Antibody (SMC-197) at 1:1000 for 2 hours RT. Secondary Antibody: Goat Anti-Mouse HRP:IgG at 1:2000 for 60 min at RT. Color Development: ECL solution for 5 min in RT. Predicted/Observed Size: 184 kDa.

Product Citations (0)

Currently there are no citations for this product.

Reviews

There are no reviews yet.