



# SZABO SCANDIC

Part of Europa Biosite

## Produktinformation



Forschungsprodukte & Biochemikalien



Zellkultur & Verbrauchsmaterial



Diagnostik & molekulare Diagnostik



Laborgeräte & Service

Weitere Information auf den folgenden Seiten!  
See the following pages for more information!



### Lieferung & Zahlungsart

siehe unsere [Liefer- und Versandbedingungen](#)

### Zuschläge

- Mindermengenzuschlag
- Trockeneiszuschlag
- Gefahrgutzuschlag
- Expressversand

### SZABO-SCANDIC HandelsgmbH

Quellenstraße 110, A-1100 Wien

T. +43(0)1 489 3961-0

F. +43(0)1 489 3961-7

[mail@szabo-scandic.com](mailto:mail@szabo-scandic.com)

[www.szabo-scandic.com](http://www.szabo-scandic.com)

[linkedin.com/company/szaboscandic](https://www.linkedin.com/company/szaboscandic) 

# Anti-CENP-A Antibody [5A7-2E11]

Mouse Anti-Human CENP-A Monoclonal IgG1  
Catalog No. SMC-202



Discovery through partnership | Excellence through quality

## Overview

---

### Product Name

CENP-A Antibody

### Description

Mouse Anti-Human CENP-A Monoclonal IgG1

### Species Reactivity

Human

### Applications

WB, ICC/IF

### Antibody Dilution

WB (1:1000), ICC/IF (1:100); optimal dilutions for assays should be determined by the user.

### Host Species

Mouse

### Immunogen Species

Human

### Immunogen

Synthetic peptide corresponding to a portion of human CENP-A

### Concentration

1 mg/ml

### Conjugates

Alkaline Phosphatase, APC, ATTO 390, ATTO 488, ATTO 565, ATTO 594, ATTO 633, ATTO 655, ATTO 680, ATTO 700, Biotin, FITC, HRP, PE/ATTO 594, PerCP, RPE, Streptavidin, Unconjugated

## Properties

---

### Storage Buffer

PBS, 50% glycerol, 0.09% sodium azide

### Storage Temperature

-20°C

### Shipping Temperature

Blue Ice or 4°C

### Purification

---

Protein G Purified

---

**Clonality**

---

Monoclonal

---

**Clone Number**

---

5A7-2E11

---

**Isotype**

---

IgG1

---

**Specificity**

---

Detects ~18kDa. Recognizes Human CENP-A.

---

**Cite This Product**

---

Mouse Anti-Human CENPA Monoclonal, Clone 5A7-2E11 (StressMarq Biosciences Inc., Victoria BC CANADA, Catalog # SMC-202)

---

**Certificate Of Analysis**

---

1 µg/ml of SMC-202 was sufficient for detection of CENPA in 20 µg of U2OS cell lysate by colorimetric immunoblot analysis using Goat anti-mouse IgG:HRP as the secondary antibody.

---

**Biological Description**

---

**Alternative Names**

---

CENP A Antibody, cenpa Antibody, Centromere auto antigen A Antibody, Histone H3 like centromeric protein A Antibody

---

**Research Areas**

---

Cell Signaling, Epigenetics

---

**Cellular Localization**

---

centromere, Chromosome, kinetochore, Nucleus

---

**Accession Number**

---

NP\_001035891.1

---

**Gene ID**

---

1058

---

**Swiss Prot**

---

P49450

---

**Scientific Background**

---

A replicated chromosome includes two kinetochores that control chromosome segregation during mitosis. The Centromere Protein-A, CENP-A, is a Histone H3-like protein that contains a C-terminal H3-like domain, which is required for centromere localization of CENP-A, and an antigenic N-terminal domain. CENP-A, originally isolated from HeLa cells, is essential for kinetochore targeting of CENP-C. In the presence of DNA CENP-A forms an octa-meric complex with histones H4, H2A, H2B. CENP-A specifically localizes to active centromeres and is a component of specialized centromeric nucleosomes, on which kinetochores are assembled. CENP-A is essential for nucleosomal packaging of centromeric DNA at interphase and functions as a centromere formation marker on the chromosome.

---

**References**

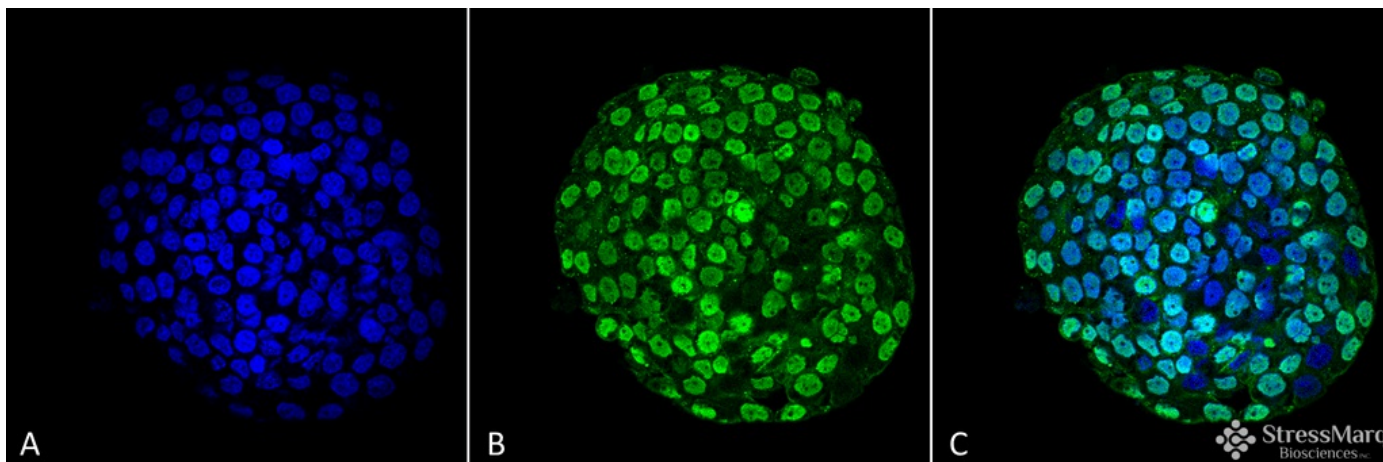
---

1. Rieder C.L., et al. (1998) Trends Cell Biol. 8: 310-318.

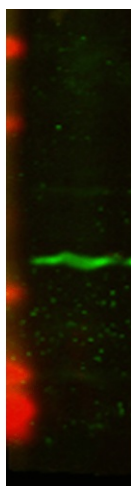
2. Choo K.H. (2000) Trends Cell Biol. 10: 182-188.
3. Muro Y., et al. (2000) Clin. Exp. Immunol. 120: 218-223.
4. Howman E.V., et al. (2000) Proc. Natl. Acad. Sci. USA 97: 1148-1153.

## Product Images

---



Immunocytochemistry/Immunofluorescence analysis using Mouse Anti-CENP-A Monoclonal Antibody, Clone 5A7-2E11 (SMC-202). Tissue: Colon cancer cell line (HT-29). Species: Human. Fixation: 4% Formaldehyde for 15 min at RT. Primary Antibody: Mouse Anti-CENP-A Monoclonal Antibody (SMC-202) at 1:100 for 60 min at RT. Secondary Antibody: Goat Anti-Mouse ATTO 488 at 1:100 for 60 min at RT. Counterstain: DAPI (blue) nuclear stain at 1:5000 for 5 min RT. Localization: Nucleus. Magnification: 60X.



Western Blot analysis of Human U2OS cell lysate showing detection of CENP-A protein using Mouse Anti-CENP-A Monoclonal Antibody, Clone 5A7-2E11 (SMC-202). Primary Antibody: Mouse Anti-CENP-A Monoclonal Antibody (SMC-202) at 1:1000.

## Product Citations (0)

---

Currently there are no citations for this product.

## Reviews

---

There are no reviews yet.