



SZABO SCANDIC

Part of Europa Biosite

Produktinformation



Forschungsprodukte & Biochemikalien



Zellkultur & Verbrauchsmaterial



Diagnostik & molekulare Diagnostik



Laborgeräte & Service

Weitere Information auf den folgenden Seiten!
See the following pages for more information!



Lieferung & Zahlungsart

siehe unsere [Liefer- und Versandbedingungen](#)

Zuschläge

- Mindermengenzuschlag
- Trockeneiszuschlag
- Gefahrgutzuschlag
- Expressversand

SZABO-SCANDIC HandelsgmbH

Quellenstraße 110, A-1100 Wien

T. +43(0)1 489 3961-0

F. +43(0)1 489 3961-7

mail@szabo-scandic.com

www.szabo-scandic.com

[linkedin.com/company/szaboscandic](https://www.linkedin.com/company/szaboscandic) 

Anti-EndoPDI Antibody [2E7/7]

Mouse Anti-Human EndoPDI Monoclonal IgG2a
Catalog No. SMC-204



Discovery through partnership | Excellence through quality

Overview

Product Name

EndoPDI Antibody

Description

Mouse Anti-Human EndoPDI Monoclonal IgG2a

Species Reactivity

Human

Applications

WB, IHC, ICC/IF, IP, ELISA

Antibody Dilution

WB (1:200); optimal dilutions for assays should be determined by the user.

Host Species

Mouse

Immunogen Species

Human

Immunogen

Synthesized peptide - 12 amino acids long (ADGEDGQDPHSK) corresponding to residues 52 - 63 of the EndoPDI protein

Concentration

1 mg/ml

Conjugates

Alkaline Phosphatase, APC, ATTO 390, ATTO 488, ATTO 565, ATTO 594, ATTO 633, ATTO 655, ATTO 680, ATTO 700, Biotin, FITC, HRP, PE/ATTO 594, PerCP, RPE, Streptavidin, Unconjugated

Properties

Storage Buffer

PBS pH7.4, 50% glycerol, 0.09% sodium azide

Storage Temperature

-20°C

Shipping Temperature

Blue Ice or 4°C

Purification

Protein G Purified

Clonality

Monoclonal

Clone Number

2E7/7

Isotype

IgG2a

Specificity

Detects ~48kDa.

Cite This Product

Mouse Anti-Human PDI Monoclonal, Clone 2E7/7 (StressMarq Biosciences Inc., Victoria BC CANADA, Catalog # SMC-204)

Certificate Of Analysis

1 µg/ml of SMC-204 was sufficient for detection of EndoPDI in 20 µg of heat shocked HeLa cell lysate by colorimetric immunoblot analysis using Goat anti -mouse IgG:HRP as the secondary antibody.

Biological Description

Alternative Names

Thioredoxin domain containing 5; ERP46; UNQ364; MGC3178; FLJ21353; FLJ90810; thioredoxin related protein; endothelial protein disulphide isomeras Antibody

Research Areas

Cell Signaling, Chaperones, Organelle Markers, Trafficking

Cellular Localization

Endoplasmic Reticulum, Endoplasmic reticulum lumen

Accession Number

NP_001139021

Gene ID

81567

Swiss Prot

Q8NBS9

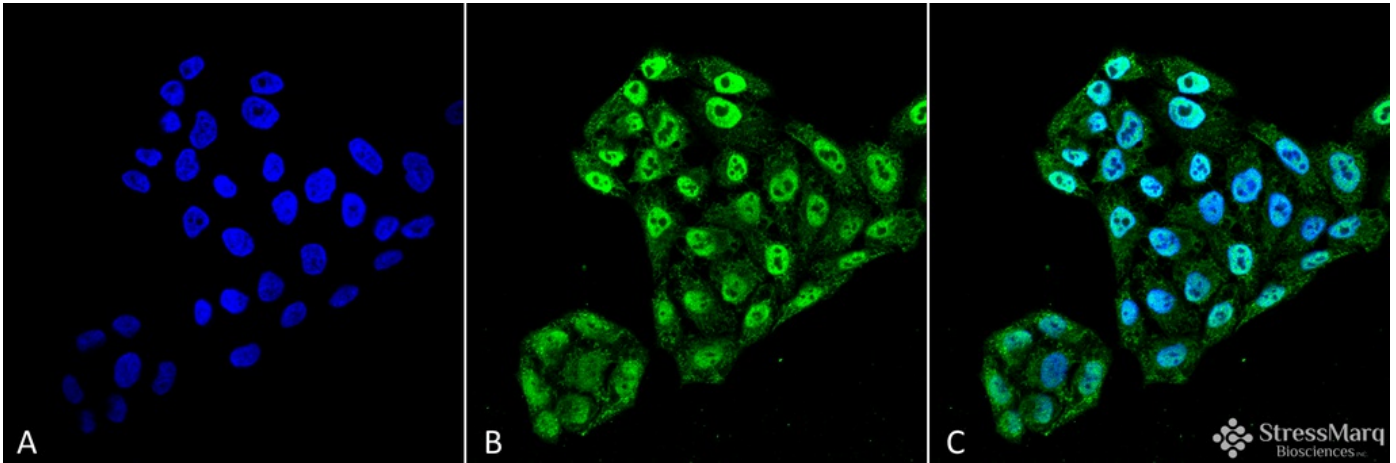
Scientific Background

Endothelial protein disulfide isomerase (EndoPDI) is a thioredoxin member of the protein disulfide isomerase family of chaperones. This enzyme has been localized to the endoplasmic reticulum in primary endothelial cells, but colocalizes with nucleoli in the nuclei of breast, colon, and renal cancer cells. EndoPDI mRNA and protein expression is induced by hypoxia and exhibits a protective effect on endothelial cells during hypoxia (1).

References

1. Sullivan D.C., et al. (2003) J Biol Chem. 278 (47) 47079-47088.

Product Images



Immunocytochemistry/Immunofluorescence analysis using Mouse Anti-EndoPDI Monoclonal Antibody, Clone 2E7/7 (SMC-204). Tissue: Cervical Cancer cell line (HeLa). Species: Human. Fixation: 4% Formaldehyde for 15 min at RT. Primary Antibody: Mouse Anti-EndoPDI Monoclonal Antibody (SMC-204) at 1:100 for 60 min at RT. Secondary Antibody: Goat Anti-Mouse ATTO 488 at 1:100 for 60 min at RT. Counterstain: DAPI (blue) nuclear stain at 1:5000 for 5 min RT. Localization: Nucleus, Endoplasmic Reticulum, Endoplasmic Reticulum Lumen. Magnification: 60X.

Product Citations (0)

Currently there are no citations for this product.

Reviews

There are no reviews yet.