



# SZABO SCANDIC

Part of Europa Biosite

## Produktinformation



Forschungsprodukte & Biochemikalien



Zellkultur & Verbrauchsmaterial



Diagnostik & molekulare Diagnostik



Laborgeräte & Service

Weitere Information auf den folgenden Seiten!  
See the following pages for more information!



### Lieferung & Zahlungsart

siehe unsere [Liefer- und Versandbedingungen](#)

### Zuschläge

- Mindermengenzuschlag
- Trockeneiszuschlag
- Gefahrgutzuschlag
- Expressversand

### SZABO-SCANDIC HandelsgmbH

Quellenstraße 110, A-1100 Wien

T. +43(0)1 489 3961-0

F. +43(0)1 489 3961-7

[mail@szabo-scandic.com](mailto:mail@szabo-scandic.com)

[www.szabo-scandic.com](http://www.szabo-scandic.com)

[linkedin.com/company/szaboscandic](https://www.linkedin.com/company/szaboscandic) 

## Anti-Slo2.2 Antibody [S3-26]

Mouse Anti-Rat Slo2.2 Monoclonal IgG1  
Catalog No. SMC-323



Discovery through partnership | Excellence through quality

### Overview

---

#### Product Name

Slo2.2 Antibody

#### Description

Mouse Anti-Rat Slo2.2 Monoclonal IgG1

#### Species Reactivity

Human, Mouse, Rat

#### Applications

WB, IHC, ICC/IF

#### Antibody Dilution

WB (1:1000), IHC (1:1000), ICC/IF (1:100); optimal dilutions for assays should be determined by the user.

#### Host Species

Mouse

#### Immunogen Species

Rat

#### Immunogen

Fusion protein amino acids 1168-1237 of rat Slo2.2 (Slack)

#### Concentration

1 mg/ml

#### Conjugates

Alkaline Phosphatase, APC, ATTO 390, ATTO 488, ATTO 565, ATTO 594, ATTO 633, ATTO 655, ATTO 680, ATTO 700, Biotin, FITC, HRP, PE/ATTO 594, PerCP, RPE, Streptavidin, Unconjugated

### Properties

---

#### Storage Buffer

PBS pH7.4, 50% glycerol, 0.09% sodium azide

#### Storage Temperature

-20°C

#### Shipping Temperature

Blue Ice or 4°C

#### Purification

---

Protein G Purified

---

**Clonality**

---

Monoclonal

---

**Clone Number**

---

S3-26

---

**Isotype**

---

IgG1

---

**Specificity**

---

Detects ~140kDa. Weak human detection.

---

**Cite This Product**

---

Mouse Anti-Rat Slo2.2 Monoclonal, Clone S3-26 (StressMarq Biosciences Inc., Victoria BC CANADA, Catalog # SMC-323)

---

**Certificate Of Analysis**

---

1 µg/ml of SMC-323 was sufficient for detection of Slo2.2 in 10 µg of rat brain lysate by colorimetric immunoblot analysis using Goat anti-mouse IgG:HRP as the secondary antibody.

---

**Biological Description**

---

**Alternative Names**

KCNT1 Antibody, potassium channel subfamily T member 1 Antibody, bA100C15.2 Antibody, SLACK Antibody, KCa4.1KIAA1422FLJ41282 Antibody

---

**Research Areas**

---

Calcium-Activated Potassium Channels, Ion Channels, Neuroscience, Potassium Channels

---

**Cellular Localization**

---

Cell membrane

---

**Accession Number**

---

NP\_068625

---

**Gene ID**

---

60444

---

**Swiss Prot**

---

Q9Z258

---

**Scientific Background**

---

Slo2.2 is a novel member of the mammalian Slo potassium channel gene family. Slo2 channels may contribute to the resting potentials of cells that control their basal level of excitability (1). They also have sensors that couple channel activity to the intracellular concentrations of Na<sup>+</sup> and Cl<sup>-</sup> (2).

---

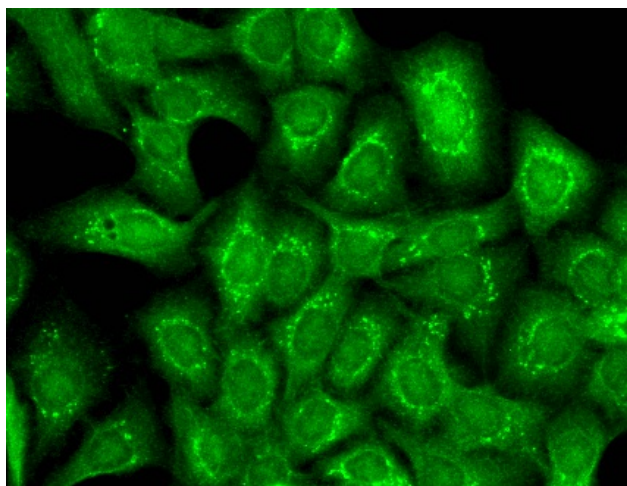
**References**

---

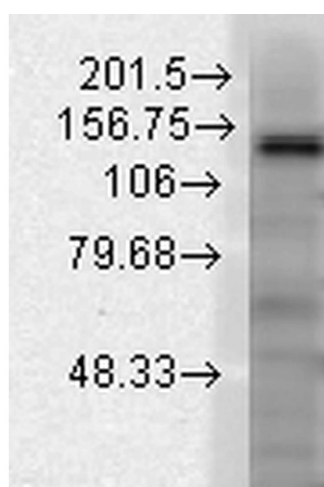
1. Santi C.M., et al. (2006) J Neuroscience, 26(19): 5059-5068.
  2. Yuan A., et al. (2003) Neuron 37: 765-773.
-

## Product Images

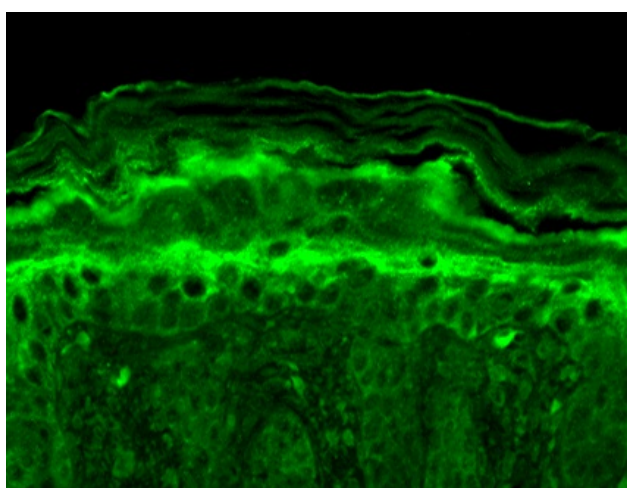
---



Immunocytochemistry/Immunofluorescence analysis using Mouse Anti-Slo2.2 Potassium Channel Monoclonal Antibody, Clone S3-26 (SMC-323). Tissue: HaCaT cells. Species: Human. Fixation: Cold 100% methanol for 10 minutes at -20°C. Primary Antibody: Mouse Anti-Slo2.2 Potassium Channel Monoclonal Antibody (SMC-323) at 1:100 for 1 hour at RT. Secondary Antibody: FITC Goat Anti-Mouse (green) at 1:50 for 1 hour at RT. Localization: Dotty staining around nucleus and some in cytoplasm.



Western Blot analysis of Rat brain membrane lysate showing detection of Slo2.2 Potassium Channel protein using Mouse Anti-Slo2.2 Potassium Channel Monoclonal Antibody, Clone S3-26 (SMC-323). Load: 15 µg protein. Block: 1.5% BSA for 30 minutes at RT. Primary Antibody: Mouse Anti-Slo2.2 Potassium Channel Monoclonal Antibody (SMC-323) at 1:1000 for 2 hours at RT. Secondary Antibody: Sheep Anti-Mouse IgG: HRP for 1 hour at RT.



Immunohistochemistry analysis using Mouse Anti-Slo2.2 Potassium Channel Monoclonal Antibody, Clone S3-26 (SMC-323). Tissue: backskin. Species: Mouse. Fixation: Bouin's Fixative and paraffin-embedded. Primary Antibody: Mouse Anti-Slo2.2 Potassium Channel Monoclonal Antibody (SMC-323) at 1:100 for 1 hour at RT. Secondary Antibody: FITC Goat Anti-Mouse (green) at 1:50 for 1 hour at RT. Localization: Suprabasal epidermal staining. Hair follicles negative.

## Product Citations (2)

---

### Other Citations

---

#### **Biomarker Analysis with Grating Coupled Surface Plasmon Coupled Fluorescence.**

Mendoza, A., Dias, J.A., Zeltner, T. and Lawrence, D.A. (2014) J Adv Bio & Biotech. 1(1): 1-22.

**PubMed ID:**   **Reactivity:** Human   **Applications:** Antibody Microarray

**Biomarker Analysis with Grating Coupled Surface Plasmon Coupled Fluorescence.**

Mendoza, A., Dias, J.A., Zeltner, T. and Lawrence, D.A. (2014) J Adv Bio & Biotech. 1(1): 1-22.

**PubMed ID:**   **Reactivity:** Mouse   **Applications:** Antibody Microarray

## Reviews

---

There are no reviews yet.