



SZABO SCANDIC

Part of Europa Biosite

Produktinformation



Forschungsprodukte & Biochemikalien



Zellkultur & Verbrauchsmaterial



Diagnostik & molekulare Diagnostik



Laborgeräte & Service

Weitere Information auf den folgenden Seiten!
See the following pages for more information!



Lieferung & Zahlungsart

siehe unsere [Liefer- und Versandbedingungen](#)

Zuschläge

- Mindermengenzuschlag
- Trockeneiszuschlag
- Gefahrgutzuschlag
- Expressversand

SZABO-SCANDIC HandelsgmbH

Quellenstraße 110, A-1100 Wien

T. +43(0)1 489 3961-0

F. +43(0)1 489 3961-7

mail@szabo-scandic.com

www.szabo-scandic.com

[linkedin.com/company/szaboscandic](https://www.linkedin.com/company/szaboscandic) 

Anti-Cav Beta 2 Antibody [S8B-1]

Mouse Anti-Rat Cav beta 2 Monoclonal IgG1
Catalog No. SMC-332



Discovery through partnership | Excellence through quality

Overview

Product Name

Cav beta 2 Antibody

Description

Mouse Anti-Rat Cav beta 2 Monoclonal IgG1

Species Reactivity

Human, Mouse, Rat

Applications

WB, IHC, ICC/IF, IP

Antibody Dilution

WB (1:1000), IHC (1:1000), ICC/IF (1:100); optimal dilutions for assays should be determined by the user.

Host Species

Mouse

Immunogen Species

Rat

Immunogen

Synthetic peptide amino acids 189-205 of rat CavBeta2

Concentration

1 mg/ml

Conjugates

Alkaline Phosphatase, APC, ATTO 390, ATTO 488, ATTO 565, ATTO 594, ATTO 633, ATTO 655, ATTO 680, ATTO 700, Biotin, FITC, HRP, PE/ATTO 594, PerCP, RPE, Streptavidin, Unconjugated

Properties

Storage Buffer

PBS pH7.4, 50% glycerol, 0.09% sodium azide

Storage Temperature

-20°C

Shipping Temperature

Blue Ice or 4°C

Purification

Protein G Purified

Clonality

Monoclonal

Clone Number

S8B-1

Isotype

IgG1

Specificity

Detects ~78 kDa. No cross reactivity against Cav β 1, Cav β 3, Cav β 4.

Cite This Product

Mouse Anti-Rat Cav Beta 2 Monoclonal, Clone S8B-1 (StressMarq Biosciences Inc., Victoria BC CANADA, Catalog # SMC-332)

Certificate Of Analysis

1 μ g/ml of SMC-332 was sufficient for detection of Cav β 2 in 10 μ g of rat brain lysate by colorimetric immunoblot analysis using Goat anti-mouse IgG:HRP as the secondary antibody

Biological Description

Alternative Names

Cacnb2 Antibody, cacnb2 Antibody, Voltage-dependent L-type calcium channel subunit beta-2 Antibody, CAB2 Antibody

Research Areas

Calcium Channels, Ion Channels, Neuroscience, Voltage-Gated Calcium Channels

Cellular Localization

Cell membrane, Sarcolemma

Accession Number

NP_446303

Gene ID

116600

Swiss Prot

Q8VGC3

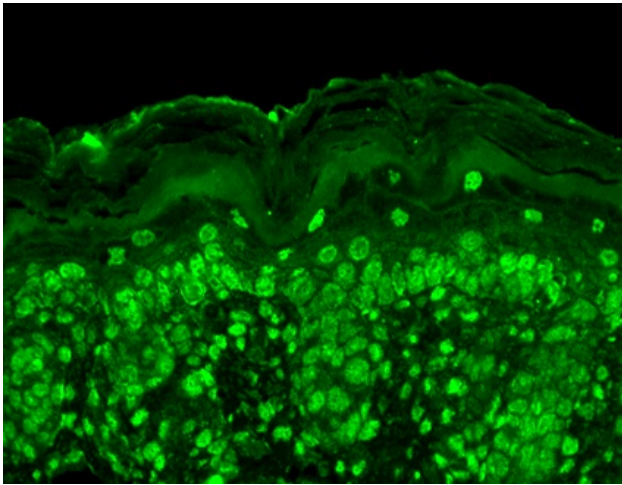
Scientific Background

Cav Beat subunits are involved in the transport of the pore forming alpha1 subunit to the plasma membrane (1). They also shield an ER Retention signal on the alpha1 subunit, thereby guiding the pore-forming subunit to the target membrane (2, 3). They also determine the biophysical properties of the calcium channel (3).

References

1. Dolphin A.C. (2003) J Bioenerg. Biomembr. 35: 599-620.
 2. Bichet D., et al. (2000) Neuron. 25: 177-190.
 3. Xie M., et al. (2007) J Cell Biol. 178(3): 489-502.
-

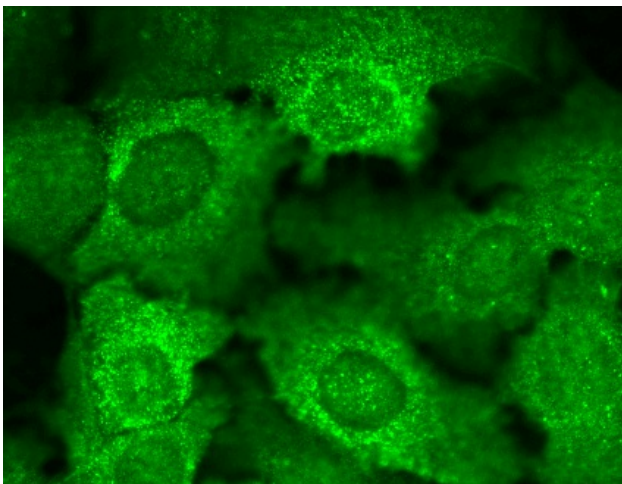
Product Images



Immunohistochemistry analysis using Mouse Anti-Cav Beta2 Calcium Channel Monoclonal Antibody, Clone S8b-1 (SMC-332). Tissue: backskin. Species: Mouse. Fixation: Bouin's Fixative and paraffin-embedded. Primary Antibody: Mouse Anti-Cav Beta2 Calcium Channel Monoclonal Antibody (SMC-332) at 1:100 for 1 hour at RT. Secondary Antibody: FITC Goat Anti-Mouse (green) at 1:50 for 1 hour at RT. Localization: All nuclei. Some nuclei also staining higher up in epidermis.



Western Blot analysis of Human Cell line lysates showing detection of Cav Beta2 Calcium Channel protein using Mouse Anti-Cav Beta2 Calcium Channel Monoclonal Antibody, Clone S8b-1 (SMC-332). Load: 15 µg protein. Block: 1.5% BSA for 30 minutes at RT. Primary Antibody: Mouse Anti-Cav Beta2 Calcium Channel Monoclonal Antibody (SMC-332) at 1:1000 for 2 hours at RT. Secondary Antibody: Sheep Anti-Mouse IgG: HRP for 1 hour at RT.



Immunocytochemistry/Immunofluorescence analysis using Mouse Anti-Cav Beta2 Calcium Channel Monoclonal Antibody, Clone S8b-1 (SMC-332). Tissue: HaCaT cells. Species: Human. Fixation: Cold 100% methanol for 10 minutes at -20°C. Primary Antibody: Mouse Anti-Cav Beta2 Calcium Channel Monoclonal Antibody (SMC-332) at 1:100 for 1 hour at RT. Secondary Antibody: FITC Goat Anti-Mouse (green) at 1:50 for 1 hour at RT. Localization: All cells positive. Bright dottiness located throughout cytoplasm and in nuclei.

Product Citations (2)

Other Citations

Biomarker Analysis with Grating Coupled Surface Plasmon Coupled Fluorescence.

Mendoza, A., Dias, J.A., Zeltner, T. and Lawrence, D.A. (2014) J Adv Bio & Biotech. 1(1): 1-22.

PubMed ID: **Reactivity:** Human **Applications:** Antibody Microarray

Biomarker Analysis with Grating Coupled Surface Plasmon Coupled Fluorescence.

Mendoza, A., Dias, J.A., Zeltner, T. and Lawrence, D.A. (2014) J Adv Bio & Biotech. 1(1): 1-22.

PubMed ID: **Reactivity:** Mouse **Applications:** Antibody Microarray

Reviews

There are no reviews yet.