



SZABO SCANDIC

Part of Europa Biosite

Produktinformation



Forschungsprodukte & Biochemikalien



Zellkultur & Verbrauchsmaterial



Diagnostik & molekulare Diagnostik



Laborgeräte & Service

Weitere Information auf den folgenden Seiten!
See the following pages for more information!



Lieferung & Zahlungsart

siehe unsere [Liefer- und Versandbedingungen](#)

Zuschläge

- Mindermengenzuschlag
- Trockeneiszuschlag
- Gefahrgutzuschlag
- Expressversand

SZABO-SCANDIC HandelsgmbH

Quellenstraße 110, A-1100 Wien

T. +43(0)1 489 3961-0

F. +43(0)1 489 3961-7

mail@szabo-scandic.com

www.szabo-scandic.com

[linkedin.com/company/szaboscandic](https://www.linkedin.com/company/szaboscandic) 

Anti-GluN2B/NR2B Antibody [S59-36]

Mouse Anti-Rat GluN2B/NR2B Monoclonal IgG2b
Catalog No. SMC-337



Discovery through partnership | Excellence through quality

Overview

Product Name

GluN2B/NR2B Antibody

Description

Mouse Anti-Rat GluN2B/NR2B Monoclonal IgG2b

Species Reactivity

Human, Mouse, Rat

Applications

WB, IHC, ICC/IF, IP

Antibody Dilution

WB (1:1000), IHC (1:1000), ICC/IF (1:100); optimal dilutions for assays should be determined by the user.

Host Species

Mouse

Immunogen Species

Rat

Immunogen

Fusion protein amino acids 20-271 (extracellular N-terminus) of rat NR2B

Concentration

1 mg/ml

Conjugates

Alkaline Phosphatase, APC, ATTO 390, ATTO 488, ATTO 565, ATTO 594, ATTO 633, ATTO 655, ATTO 680, ATTO 700, Biotin, FITC, HRP, PE/ATTO 594, PerCP, RPE, Streptavidin, Unconjugated

Properties

Storage Buffer

PBS pH7.4, 50% glycerol, 0.09% sodium azide

Storage Temperature

-20°C

Shipping Temperature

Blue Ice or 4°C

Purification

Protein G Purified

Clonality

Monoclonal

Clone Number

S59-36

Isotype

IgG2b

Specificity

Detects ~166kDa. No cross-reactivity against NR2A.

Cite This Product

Mouse Anti-Rat NR2B Monoclonal, Clone S59-36 (StressMarq Biosciences Inc., Victoria BC CANADA, Catalog # SMC-337)

Certificate Of Analysis

1 µg/ml of SMC-337 was sufficient for detection of NR2B in 10 µg of rat brain lysate by colorimetric immunoblot analysis using goat anti-mouse IgG:HRP as the secondary antibody.

Biological Description

Alternative Names

NMDAR2B Antibody, hNR3 Antibody, MGC142180 Antibody, glutamate receptor subunit epsilon-2 Antibody, NR3 Antibody

Research Areas

Glutamate Receptors, Ion Channels, Neurodegeneration, Neuroscience, Neurotransmitter Receptors, NMDA Receptors

Cellular Localization

Cell Junction, Cell membrane, Postsynaptic cell membrane, Synapse

Accession Number

NP_036706.1

Gene ID

24410

Swiss Prot

Q00960

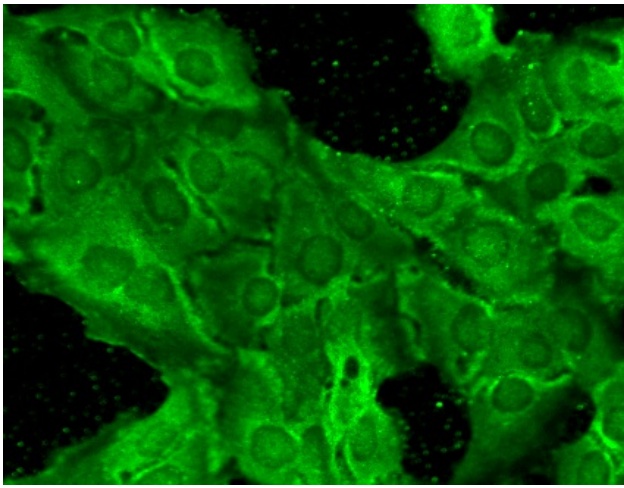
Scientific Background

NR2B containing receptors have been implicated in synaptic plasticity, memory formation and pain modulation (1). Studies suggest that the NR2B subunit of glutamate receptors may be potential targets for relieving pain; NR2B may be a probable target for anti-nociceptive drugs, and may also be useful as analgesics (2).

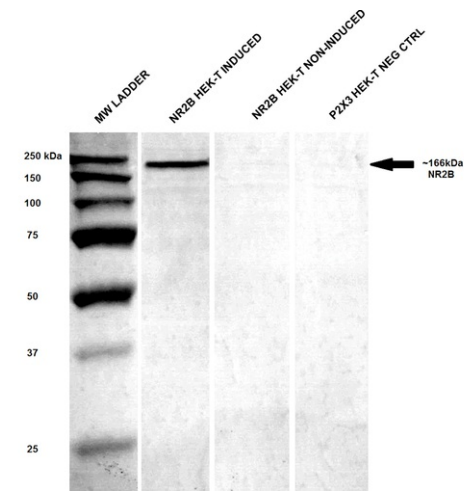
References

1. Zhuo M. (2009) Mol Brain. 2(1): 4
 2. Gurwitz D, and Weizman A. (2002) Drug Discovery Today, 7(7): 403-406.
-

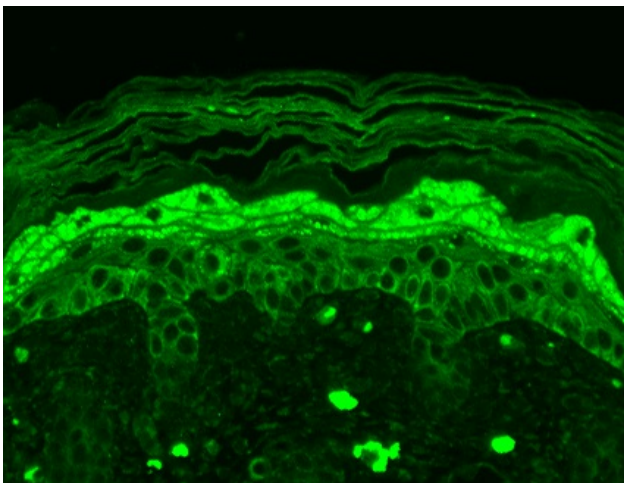
Product Images



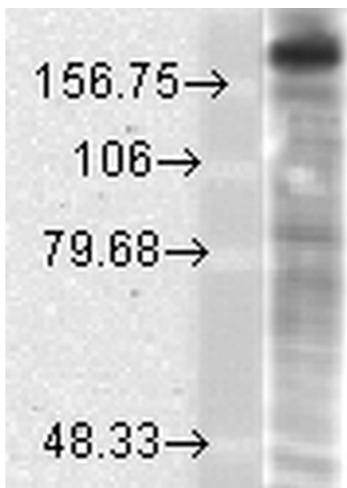
Immunocytochemistry/Immunofluorescence analysis using Mouse Anti-GluN2B/NR2B Monoclonal Antibody, Clone S59-36 (SMC-337). Tissue: HaCaT cells. Species: Human. Fixation: Cold 100% methanol for 10 minutes at -20°C. Primary Antibody: Mouse Anti-GluN2B/NR2B Monoclonal Antibody (SMC-337) at 1:100 for 1 hour at RT. Secondary Antibody: FITC Goat Anti-Mouse (green) at 1:50 for 1 hour at RT. Localization: Everything positive.



Western Blot analysis of Human HEK-T lysates showing detection of GluN2B/NR2B protein using Mouse Anti-GluN2B/NR2B Monoclonal Antibody, Clone S59-36 (SMC-337). Primary Antibody: Mouse Anti-GluN2B/NR2B Monoclonal Antibody (SMC-337) at 1:250.



Immunohistochemistry analysis using Mouse Anti-GluN2B/NR2B Monoclonal Antibody, Clone S59-36 (SMC-337). Tissue: backskin. Species: Mouse. Fixation: Bouin's Fixative and paraffin-embedded. Primary Antibody: Mouse Anti-GluN2B/NR2B Monoclonal Antibody (SMC-337) at 1:100 for 1 hour at RT. Secondary Antibody: FITC Goat Anti-Mouse (green) at 1:50 for 1 hour at RT. Localization: Filaggrinlike staining, and dermal staining.



Western Blot analysis of Rat brain membrane lysate showing detection of GluN2B/NR2B protein using Mouse Anti-GluN2B/NR2B Monoclonal Antibody, Clone S59-36 (SMC-337). Load: 15 μ g protein. Block: 1.5% BSA for 30 minutes at RT. Primary Antibody: Mouse Anti-GluN2B/NR2B Monoclonal Antibody (SMC-337) at 1:1000 for 2 hours at RT. Secondary Antibody: Sheep Anti-Mouse IgG: HRP for 1 hour at RT.

Product Citations (2)

Other Citations

Biomarker Analysis with Grating Coupled Surface Plasmon Coupled Fluorescence.

Mendoza, A., Dias, J.A., Zeltner, T. and Lawrence, D.A. (2014) J Adv Bio & Biotech. 1(1): 1-22.

PubMed ID: **Reactivity:** Human **Applications:** Antibody Microarray

Biomarker Analysis with Grating Coupled Surface Plasmon Coupled Fluorescence.

Mendoza, A., Dias, J.A., Zeltner, T. and Lawrence, D.A. (2014) J Adv Bio & Biotech. 1(1): 1-22.

PubMed ID: **Reactivity:** Mouse **Applications:** Antibody Microarray

Reviews

There are no reviews yet.