



SZABO SCANDIC

Part of Europa Biosite

Produktinformation



Forschungsprodukte & Biochemikalien



Zellkultur & Verbrauchsmaterial



Diagnostik & molekulare Diagnostik



Laborgeräte & Service

Weitere Information auf den folgenden Seiten!
See the following pages for more information!



Lieferung & Zahlungsart

siehe unsere [Liefer- und Versandbedingungen](#)

Zuschläge

- Mindermengenzuschlag
- Trockeneiszuschlag
- Gefahrgutzuschlag
- Expressversand

SZABO-SCANDIC HandelsgmbH

Quellenstraße 110, A-1100 Wien

T. +43(0)1 489 3961-0

F. +43(0)1 489 3961-7

mail@szabo-scandic.com

www.szabo-scandic.com

[linkedin.com/company/szaboscandic](https://www.linkedin.com/company/szaboscandic) 

Anti-GABA A Receptor Alpha 1 Antibody [S95-35]

Mouse Anti-Human GABA A Receptor Alpha 1 Monoclonal
IgG2A
Catalog No. SMC-346



Discovery through partnership | Excellence through quality

Overview

Product Name

GABA A Receptor Alpha 1 Antibody

Description

Mouse Anti-Human GABA A Receptor Alpha 1 Monoclonal IgG2A

Species Reactivity

Human, Mouse, Rat

Applications

WB, IHC, ICC/IF

Antibody Dilution

WB (1:1000), IHC (1:1000), ICC/IF (1:100); optimal dilutions for assays should be determined by the user.

Host Species

Mouse

Immunogen Species

Human

Immunogen

Fusion protein amino acids 355-394 of human GABA-A-R-Alpha1

Concentration

1 mg/ml

Conjugates

Alkaline Phosphatase, APC, ATTO 390, ATTO 488, ATTO 565, ATTO 594, ATTO 633, ATTO 655, ATTO 680, ATTO 700, Biotin, FITC, HRP, PE/ATTO 594, PerCP, RPE, Streptavidin, Unconjugated

Properties

Storage Buffer

PBS pH7.4, 50% glycerol, 0.09% sodium azide

Storage Temperature

-20°C

Shipping Temperature

Blue Ice or 4°C

Purification

Protein G Purified

Clonality

Monoclonal

Clone Number

S95-35

Isotype

IgG2a

Specificity

Detects ~55kDa. No cross-reactivity against GABA-A-R-Alpha 2 or Alpha3.

Cite This Product

Mouse Anti-Human GABA A Receptor Alpha 1 Monoclonal, Clone S95-35 (StressMarq Biosciences Inc., Victoria BC CANADA, Catalog # SMC-346)

Certificate Of Analysis

1 µg/ml of SMC-346 was sufficient for detection of alpha1 GABA receptor in 10 µg of rat brain lysate by colorimetric immunoblot analysis using Goat anti-mouse IgG:HRP as the secondary antibody.

Biological Description

Alternative Names

ECA4 antibody, EJM antibody, EJM5 antibody, Gaba receptor alpha 1 polypeptide antibody, GABA(A) receptor antibody, GABA(A) receptor subunit alpha 1 antibody, GABA(A) receptor subunit alpha-1 antibody, GABA(A) receptor, alpha 1 antibody, GABRA 1 antibody, GABRA1 antibody, Gamma aminobutyric acid (GABA) A receptor alpha 1 antibody, Gamma aminobutyric acid A receptor alpha 1 antibody, Gamma aminobutyric acid receptor subunit alpha 1 antibody, Gamma-aminobutyric acid receptor subunit alpha-1 antibody, GBRA1_HUMAN antibody

Research Areas

GABA Receptors, GABAA Receptors, Neuroscience, Neurotransmitter Receptors

Cellular Localization

Cell Junction, Cell membrane, Postsynaptic cell membrane, Synapse

Accession Number

NP_034380.1

Gene ID

14394

Swiss Prot

P14867

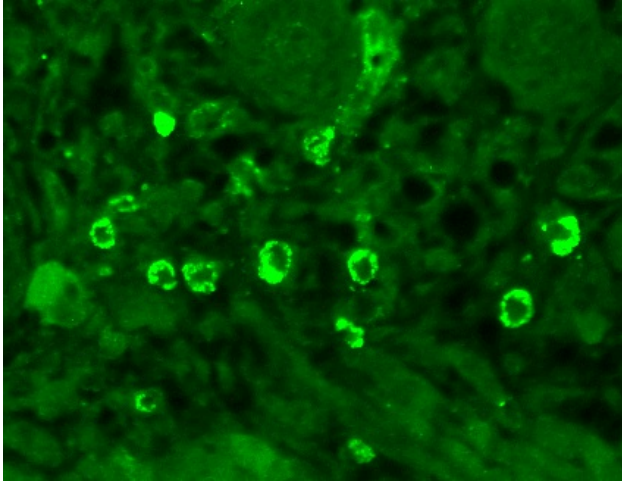
Scientific Background

The GABA-A receptor is a member of the superfamily of fast acting ligand-gated ion channels. The individual subunits of these receptors have similar sequences and structural features (1). GABA-A receptors are the major fast inhibitory neurotransmitter gated ion channels in the brain (2).

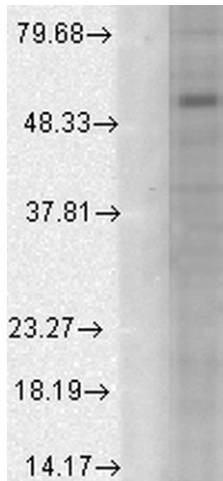
References

1. Bracamontes J.R. and Steinbach J.H. (2008) J Bio Chem. 283: 26128-26136.
2. Macdonald R.L., Olsen R.W. (1993) Annu Rev Neurosci. 17: 569-602.

Product Images



Immunohistochemistry analysis using Mouse Anti-GABA A Receptor Monoclonal Antibody, Clone S95-35 (SMC-346). Tissue: backskin. Species: Mouse. Fixation: Bouin's Fixative and paraffin-embedded. Primary Antibody: Mouse Anti-GABA A Receptor Monoclonal Antibody (SMC-346) at 1:100 for 1 hour at RT. Secondary Antibody: FITC Goat Anti-Mouse (green) at 1:50 for 1 hour at RT. Localization: Dermal Cells.



Western Blot analysis of Human Cell line lysates showing detection of GABA A Receptor protein using Mouse Anti-GABA A Receptor Monoclonal Antibody, Clone S95-35 (SMC-346). Load: 15 µg protein. Block: 1.5% BSA for 30 minutes at RT. Primary Antibody: Mouse Anti-GABA A Receptor Monoclonal Antibody (SMC-346) at 1:1000 for 2 hours at RT. Secondary Antibody: Sheep Anti-Mouse IgG: HRP for 1 hour at RT.

Product Citations (2)

Other Citations

Biomarker Analysis with Grating Coupled Surface Plasmon Coupled Fluorescence.

Mendoza, A., Dias, J.A., Zeltner, T. and Lawrence, D.A. (2014) J Adv Bio & Biotech. 1(1): 1-22.

PubMed ID: **Reactivity:** Human **Applications:** Antibody Microarray

Biomarker Analysis with Grating Coupled Surface Plasmon Coupled Fluorescence.

Mendoza, A., Dias, J.A., Zeltner, T. and Lawrence, D.A. (2014) J Adv Bio & Biotech. 1(1): 1-22.

PubMed ID: **Reactivity:** Mouse **Applications:** Antibody Microarray

Reviews

There are no reviews yet.