



# SZABO SCANDIC

Part of Europa Biosite

## Produktinformation



Forschungsprodukte & Biochemikalien



Zellkultur & Verbrauchsmaterial



Diagnostik & molekulare Diagnostik



Laborgeräte & Service

Weitere Information auf den folgenden Seiten!  
See the following pages for more information!



### Lieferung & Zahlungsart

siehe unsere [Liefer- und Versandbedingungen](#)

### Zuschläge

- Mindermengenzuschlag
- Trockeneiszuschlag
- Gefahrgutzuschlag
- Expressversand

### SZABO-SCANDIC HandelsgmbH

Quellenstraße 110, A-1100 Wien

T. +43(0)1 489 3961-0

F. +43(0)1 489 3961-7

[mail@szabo-scandic.com](mailto:mail@szabo-scandic.com)

[www.szabo-scandic.com](http://www.szabo-scandic.com)

[linkedin.com/company/szaboscandic](https://www.linkedin.com/company/szaboscandic) 

# Anti-LRP4 (Extracellular) Antibody [S207-27]

Mouse Anti-Mouse LRP4 (Extracellular) Monoclonal IgG2A  
Catalog No. SMC-418



Discovery through partnership | Excellence through quality

## Overview

---

### Product Name

LRP4 (Extracellular) Antibody

### Description

Mouse Anti-Mouse LRP4 (Extracellular) Monoclonal IgG2A

### Species Reactivity

Human, Mouse, Rat

### Applications

WB, ICC/IF

### Antibody Dilution

WB (1:1000), ICC/IF (1:100); optimal dilutions for assays should be determined by the user.

### Host Species

Mouse

### Immunogen Species

Mouse

### Immunogen

Fusion protein amino acids 26- 350 (extracellular N-terminus) of mouse LTP4

### Concentration

1 mg/ml

### Conjugates

Alkaline Phosphatase, APC, ATTO 390, ATTO 488, ATTO 565, ATTO 594, ATTO 633, ATTO 655, ATTO 680, ATTO 700, Biotin, FITC, HRP, PE/ATTO 594, PerCP, RPE, Streptavidin, Unconjugated

## Properties

---

### Storage Buffer

PBS pH7.4, 50% glycerol, 0.09% sodium azide

### Storage Temperature

-20°C

### Shipping Temperature

Blue Ice or 4°C

### Purification

---

Protein G Purified

---

### Clonality

Monoclonal

---

### Clone Number

S207-27

---

### Isotype

IgG2a

---

### Specificity

Detects the extracellular domain of LRP4 ~215kDa. Degradation product can be seen at ~150kDa.

---

### Cite This Product

Mouse Anti-Mouse LRP4 Monoclonal, Clone S207-27 (StressMarq Biosciences Inc., Victoria BC CANADA, Catalog # SMC-418)

---

### Certificate Of Analysis

1 µg/ml of SMC-418 was sufficient for detection of LRP4 in 20 µg of rat brain lysate by colorimetric immunoblot analysis using Goat anti-mouse IgG:HRP as the secondary antibody.

---

## Biological Description

---

### Alternative Names

Corin Antibody, KIAA0816 Antibody, LDLR Antibody, LDLR dan Antibody, Low density lipoprotein receptor related protein 4 Antibody, LRP-4 Antibody, LRP10 Antibody, MEGF7 Antibody, Multiple epidermal growth factor like domains 7 Antibody

---

### Research Areas

Cell Signaling, Cell Structure, Membrane Markers, Neuroscience

---

### Cellular Localization

Membrane

---

### Accession Number

NP\_766256.3

---

### Gene ID

83469

---

### Swiss Prot

Q8VI56

---

### Scientific Background

Potential cell surface endocytic receptor, which binds and internalizes extracellular ligands for degradation by lysosomes. It is involved in the negative regulation of the canonical Wnt signaling pathway, being able to antagonize the LRP6-mediated activation of this pathway.

---

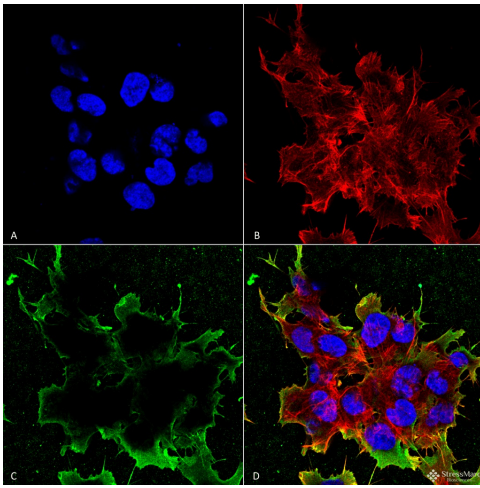
### References

1. Bennett V., Baines A.J. (2001) *Physiol. Rev.* 81 (3): 135392.

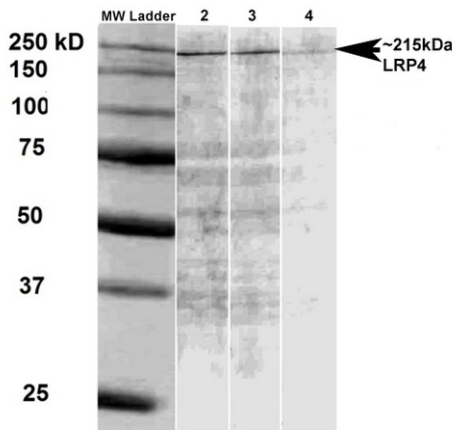
---

## Product Images

---



Immunocytochemistry/Immunofluorescence analysis using Mouse Anti-LRP4 (Extracellular) Monoclonal Antibody, Clone S207-27 (SMC-418). Tissue: Neuroblastoma cell line SK-N-BE. Species: Human. Fixation: 4% Formaldehyde for 15 min at RT. Primary Antibody: Mouse Anti-LRP4 (Extracellular) Monoclonal Antibody (SMC-418) at 1:100 for 60 min at RT. Secondary Antibody: Goat Anti-Mouse ATTO 488 at 1:100 for 60 min at RT. Counterstain: Phalloidin Texas Red F-Actin stain; DAPI (blue) nuclear stain at 1:1000, 1:5000 for 60min RT, 5min RT. Localization: Membrane. Magnification: 60X. (A) DAPI (blue) nuclear stain (B) Phalloidin Texas Red F-Actin stain (C) LRP4 (Extracellular) Antibody (D) Composite.



Western Blot analysis of Rat brain membrane lysate showing detection of LRP4 protein using Mouse Anti-LRP4 Monoclonal Antibody, Clone S207-27 (SMC-418). Primary Antibody: Mouse Anti-LRP4 Monoclonal Antibody (SMC-418) at 1:500, 1:1000, and 1:2000.

## Product Citations (0)

Currently there are no citations for this product.

## Reviews

There are no reviews yet.