



SZABO SCANDIC

Part of Europa Biosite

Produktinformation



Forschungsprodukte & Biochemikalien



Zellkultur & Verbrauchsmaterial



Diagnostik & molekulare Diagnostik



Laborgeräte & Service

Weitere Information auf den folgenden Seiten!
See the following pages for more information!



Lieferung & Zahlungsart

siehe unsere [Liefer- und Versandbedingungen](#)

Zuschläge

- Mindermengenzuschlag
- Trockeneiszuschlag
- Gefahrgutzuschlag
- Expressversand

SZABO-SCANDIC HandelsgmbH

Quellenstraße 110, A-1100 Wien

T. +43(0)1 489 3961-0

F. +43(0)1 489 3961-7

mail@szabo-scandic.com

www.szabo-scandic.com

[linkedin.com/company/szaboscandic](https://www.linkedin.com/company/szaboscandic)

Anti-GluN2A/NR2A Antibody [S327-95]

Mouse Anti-Rat GluN2A/NR2A Monoclonal IgG2A
Catalog No. SMC-429



Discovery through partnership | Excellence through quality

Overview

Product Name

GluN2A/NR2A Antibody

Description

Mouse Anti-Rat GluN2A/NR2A Monoclonal IgG2A

Species Reactivity

Human, Mouse, Rat

Applications

WB, IHC, ICC/IF

Antibody Dilution

WB (1:1000); optimal dilutions for assays should be determined by the user.

Host Species

Mouse

Immunogen Species

Rat

Immunogen

Fusion protein amino acids 75-325 (extracellular N-terminus) of rat GluN2A/NR2A

Concentration

1 mg/ml

Conjugates

Alkaline Phosphatase, APC, ATTO 390, ATTO 488, ATTO 565, ATTO 594, ATTO 633, ATTO 655, ATTO 680, ATTO 700, Biotin, FITC, HRP, PE/ATTO 594, PerCP, RPE, Streptavidin, Unconjugated

Properties

Storage Buffer

PBS pH7.4, 50% glycerol, 0.09% sodium azide

Storage Temperature

-20°C

Shipping Temperature

Blue Ice or 4°C

Purification

Protein G Purified

Clonality

Monoclonal

Clone Number

S327-95

Isotype

IgG2a

Specificity

Detects ~170kDa. Does not react with NR2B.

Cite This Product

Mouse Anti-Rat NR2A Monoclonal, Clone S327-95 (StressMarq Biosciences Inc., Victoria BC CANADA, Catalog # SMC-429)

Certificate Of Analysis

1 µg/ml of SMC-429 was sufficient for detection of GluN2A/NR2A in 20 µg of rat brain lysate by colorimetric immunoblot analysis using Goat anti-mouse IgG:HRP as the secondary antibody.

Biological Description

Alternative Names

NMDA 2A Antibody, NMDAR2A Antibody, NMDAR 2A Antibody, NMDA Receptor 2A Antibody, Glutamate Receptor Antibody, GRIN2A Antibody, Glutamate [NMDA] Receptor subunit epsilon-1 Antibody, Glutamate receptor ionotropic N methyl D aspartate 2A Antibody, HNR2A Antibody, N methyl D aspartate receptor channel Antibody, subunit epsilon 1 Antibody, N Methyl D Aspartate Receptor Subtype 2A Antibody, N methyl D aspartate receptor subunit 2A Antibody, NMDA receptor subtype 2A Antibody, NMDA Receptor Type 2A Antibody, OTTHUMP00000160135 Antibody, OTTHUMP00000174531 Antibody

Research Areas

Cell Signaling, Glutamate Receptors, Neuroscience, Neurotransmitter Receptors, NMDA Receptors

Cellular Localization

Cell Junction, Cell membrane

Accession Number

NP_036705.3

Gene ID

24409

Swiss Prot

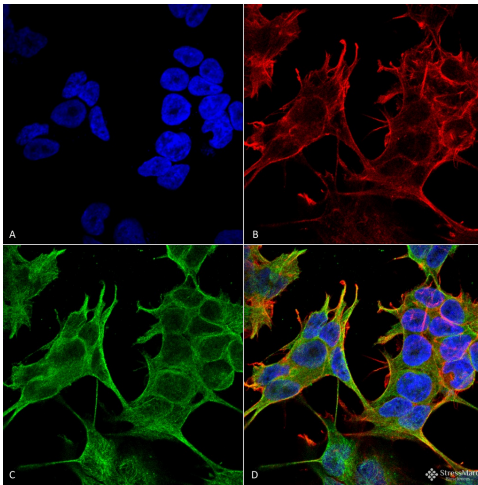
Q00959

Scientific Background

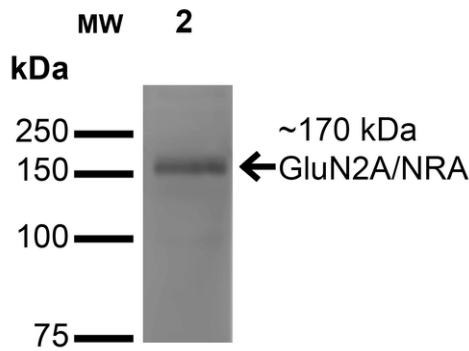
N-methyl-D-aspartate (NMDA) receptors are a class of ionotropic glutamate-gated ion channels. These receptors have been shown to be involved in long-term potentiation, an activity-dependent increase in the efficiency of synaptic transmission thought to underlie certain kinds of memory and learning. NMDA receptor channels are heteromers composed of the key receptor subunit NMDAR1 (GRIN1) and 1 or more of the 4 NMDAR2 subunits: NMDAR2A (GRIN2A), NMDAR2B (GRIN2B), NMDAR2C (GRIN2C) and NMDAR2D (GRIN2D).

References

Product Images



Immunocytochemistry/Immunofluorescence analysis using Mouse Anti-GluN2A/NR2A Monoclonal Antibody, Clone S327-95 (SMC-429). Tissue: Neuroblastoma cell line SK-N-BE. Species: Human. Fixation: 4% Formaldehyde for 15 min at RT. Primary Antibody: Mouse Anti-GluN2A/NR2A Monoclonal Antibody (SMC-429) at 1:100 for 60 min at RT. Secondary Antibody: Goat Anti-Mouse ATTO 488 at 1:100 for 60 min at RT. Counterstain: Phalloidin Texas Red F-Actin stain; DAPI (blue) nuclear stain at 1:1000, 1:5000 for 60min RT, 5min RT. Localization: Cell Membrane, Cell Junction. Magnification: 60X. (A) DAPI (blue) nuclear stain (B) Phalloidin Texas Red F-Actin stain (C) GluN2A/NR2A Antibody (D) Composite.



Western Blot analysis of Monkey COS cells transfected with GFP-tagged NR2A showing detection of ~170 kDa GluN2A/NR2A protein using Mouse Anti-GluN2A/NR2A Monoclonal Antibody, Clone S327-95 (SMC-429). Lane 1: Molecular Weight Ladder. Lane 2: Monkey COS cells transfected with GFP-tagged NR2A. Load: 15 μ g. Block: 2% BSA and 2% Skim Milk in 1X TBST. Primary Antibody: Mouse Anti-GluN2A/NR2A Monoclonal Antibody (SMC-429) at 1:200 for 16 hours at 4°C. Secondary Antibody: Goat Anti-Mouse IgG: HRP at 1:1000 for 1 hour RT. Color Development: ECL solution for 6 min in RT. Predicted/Observed Size: ~170 kDa. Other Band(s): 100 kDa.

Product Citations (0)

Currently there are no citations for this product.

Reviews

There are no reviews yet.