



SZABO SCANDIC

Part of Europa Biosite

Produktinformation



Forschungsprodukte & Biochemikalien



Zellkultur & Verbrauchsmaterial



Diagnostik & molekulare Diagnostik



Laborgeräte & Service

Weitere Information auf den folgenden Seiten!
See the following pages for more information!



Lieferung & Zahlungsart

siehe unsere [Liefer- und Versandbedingungen](#)

Zuschläge

- Mindermengenzuschlag
- Trockeneiszuschlag
- Gefahrgutzuschlag
- Expressversand

SZABO-SCANDIC HandelsgmbH

Quellenstraße 110, A-1100 Wien

T. +43(0)1 489 3961-0

F. +43(0)1 489 3961-7

mail@szabo-scandic.com

www.szabo-scandic.com

[linkedin.com/company/szaboscandic](https://www.linkedin.com/company/szaboscandic) 

Anti-Notch1 Antibody [S253-32]

Mouse Anti-Mouse Notch1 Monoclonal IgG1
Catalog No. SMC-430



Discovery through partnership | Excellence through quality

Overview

Product Name

Notch1 Antibody

Description

Mouse Anti-Mouse Notch1 Monoclonal IgG1

Species Reactivity

Mouse, Rat

Applications

WB, ICC/IF

Antibody Dilution

WB (1:1000); optimal dilutions for assays should be determined by the user.

Host Species

Mouse

Immunogen Species

Mouse

Immunogen

Fusion protein amino acids 20-216 (extracellular N-terminus, EGF-like domains 1-5) of mouse Notch1

Concentration

1 mg/ml

Conjugates

Alkaline Phosphatase, APC, ATTO 390, ATTO 488, ATTO 565, ATTO 594, ATTO 633, ATTO 655, ATTO 680, ATTO 700, Biotin, FITC, HRP, PE/ATTO 594, PerCP, RPE, Streptavidin, Unconjugated

Properties

Storage Buffer

PBS pH7.4, 50% glycerol, 0.09% sodium azide

Storage Temperature

-20°C

Shipping Temperature

Blue Ice or 4°C

Purification

Protein G Purified

Clonality

Monoclonal

Clone Number

S253-32

Isotype

IgG1

Specificity

Detects >270kDa, ~120kDa and small fragments due to proteolysis. Does not cross-react with Notch 2 or Notch3.

Cite This Product

Mouse Anti-Mouse Notch1 Monoclonal, Clone S253-32 (StressMarq Biosciences Inc., Victoria BC CANADA, Catalog # SMC-430)

Certificate Of Analysis

1 µg/ml of SMC-430 was sufficient for detection of Notch1 in 20 µg of rat brain membrane lysate and assayed by colorimetric immunoblot analysis using goat anti-mouse IgG:HRP as the secondary antibody.

Biological Description

Alternative Names

Neurogenic locus notch homolog protein 1 Antibody, hN1 Antibody, Translocation associated notch protein Antibody, TAN1 Antibody, TAN-1 Antibody, Motch A Antibody, mT14 Antibody, p300 Antibody, Motch Antibody, Mis6 Antibody, Neurogenic locus notch protein homolog Antibody, NICD Antibody, Notch 1 intracellular domain Antibody, Notch gene homolog 1 (Drosophila) Antibody, Notch homolog 1 Antibody, translocation-associated (Drosophila) Antibody, NOTCH Drosophila Antibody, homolog of 1 Antibody, Translocation associated notch homolog Antibody, Translocation associated notch protein TAN 1 Antibody, xotch Antibody

Research Areas

Cardiovascular System, Cell Signaling, Epigenetics, Heart, Neuroscience

Cellular Localization

Cell membrane, Nucleus

Accession Number

NP_032740.3

Gene ID

18128

Swiss Prot

Q01705

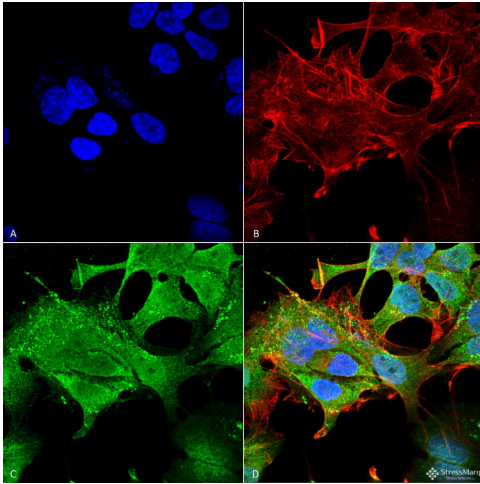
Scientific Background

Notch is synthesized in the endoplasmic reticulum as an inactive form which is proteolytically cleaved by a furin-like convertase (S1 cleavage) in the trans-golgi network before it reaches the plasma membrane to yield an active, ligand-accessible form. Cleavage results in a C-terminal fragment N(TM) and a N-terminal fragment N(EC). Following ligand binding, it is cleaved (S2 cleavage) by TNF-alpha converting enzyme (TACE) to yield a membrane-associated intermediate fragment called Notch extracellular truncation (NEXT). This fragment is then cleaved by presenilin-dependent gamma-secretase (S3 cleavage) to release the intracellular domain (NICD) from the membrane.

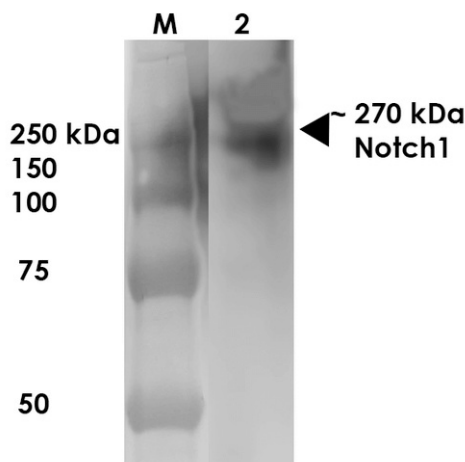
References

1. Swiatek P.J., et al. (1994) *Genes Dev.* 8: 707-719.
2. Simpson P. (1994) *The Notch Receptors*. Austin, TX: R.G. Landes Company.
3. Lindsell C.E., et al. (1995) *Cell* 80: 909-917.
4. Uyttendaele H., et al. (1996) *Development* 122: 2251-2259.
5. Girard L., et al. (1996) *Genes Dev.* 10: 1930-1944.

Product Images



Immunocytochemistry/Immunofluorescence analysis using Mouse Anti-Notch1 Monoclonal Antibody, Clone S253-32 (SMC-430). Tissue: Neuroblastoma cell line SK-N-BE. Species: Human. Fixation: 4% Formaldehyde for 15 min at RT. Primary Antibody: Mouse Anti-Notch1 Monoclonal Antibody (SMC-430) at 1:100 for 60 min at RT. Secondary Antibody: Goat Anti-Mouse ATTO 488 at 1:100 for 60 min at RT. Counterstain: Phalloidin Texas Red F-Actin stain; DAPI (blue) nuclear stain at 1:1000, 1:5000 for 60min RT, 5min RT. Localization: Cell Membrane, Nucleus. Magnification: 60X. (A) DAPI (blue) nuclear stain (B) Phalloidin Texas Red F-Actin stain (C) Notch1 Antibody (D) Composite.



Western Blot analysis of Rat Brain Membrane showing detection of ~270 kDa Notch1 protein using Mouse Anti-Notch1 Monoclonal Antibody, Clone S253-32 (SMC-430). Lane 1: MW Ladder. Lane 2: Rat Brain Membrane (10 µg). . Load: 10 µg. Block: 5% milk. Primary Antibody: Mouse Anti-Notch1 Monoclonal Antibody (SMC-430) at 1:1000 for 1 hour at RT. Secondary Antibody: Goat Anti-Mouse IgG: HRP at 1:200 for 1 hour at RT. Color Development: TMB solution for 10 min at RT. Predicted/Observed Size: ~270 kDa.

Product Citations (0)

Currently there are no citations for this product.

Reviews

There are no reviews yet.