



SZABO SCANDIC

Part of Europa Biosite

Produktinformation



Forschungsprodukte & Biochemikalien



Zellkultur & Verbrauchsmaterial



Diagnostik & molekulare Diagnostik



Laborgeräte & Service

Weitere Information auf den folgenden Seiten!
See the following pages for more information!



Lieferung & Zahlungsart

siehe unsere [Liefer- und Versandbedingungen](#)

Zuschläge

- Mindermengenzuschlag
- Trockeneiszuschlag
- Gefahrgutzuschlag
- Expressversand

SZABO-SCANDIC HandelsgmbH

Quellenstraße 110, A-1100 Wien

T. +43(0)1 489 3961-0

F. +43(0)1 489 3961-7

mail@szabo-scandic.com

www.szabo-scandic.com

[linkedin.com/company/szaboscandic](https://www.linkedin.com/company/szaboscandic) 

Anti-SUR2A Antibody [S319A-14]

Mouse Anti-Mouse SUR2A Monoclonal IgG2A
Catalog No. SMC-431



Discovery through partnership | Excellence through quality

Overview

Product Name

SUR2A Antibody

Description

Mouse Anti-Mouse SUR2A Monoclonal IgG2A

Species Reactivity

Mouse, Rat

Applications

WB, IHC, ICC/IF

Antibody Dilution

WB (1:1000); optimal dilutions for assays should be determined by the user.

Host Species

Mouse

Immunogen Species

Mouse

Immunogen

Fusion protein amino acids 1505-1546 (SSIVDAGLVLVFSEGLVECDTGPNNLLQHKNGLFSTLVMTNK, cytoplasmic C-terminus) of mouse SUR2A

Concentration

1 mg/ml

Conjugates

Alkaline Phosphatase, APC, ATTO 390, ATTO 488, ATTO 565, ATTO 594, ATTO 633, ATTO 655, ATTO 680, ATTO 700, Biotin, FITC, HRP, PE/ATTO 594, PerCP, RPE, Streptavidin, Unconjugated

Properties

Storage Buffer

PBS pH7.4, 50% glycerol, 0.09% sodium azide

Storage Temperature

-20°C

Shipping Temperature

Blue Ice or 4°C

Purification

Protein G Purified

Clonality

Monoclonal

Clone Number

S319A-14

Isotype

IgG2a

Specificity

Detects ~120kDa. Does not cross-react with SUR2B.

Cite This Product

Mouse Anti-Mouse SUR2A Monoclonal, Clone S319A-14 (StressMarq Biosciences Inc., Victoria BC CANADA, Catalog # SMC-431)

Certificate Of Analysis

1 µg/ml of SMC-431 was sufficient for detection of SUR2A in 20 µg of mouse brain membrane lysate and assayed by colorimetric immunoblot analysis using goat anti-mouse IgG:HRP as the secondary antibody.

Biological Description

Alternative Names

ABCC9 Antibody, Sulfonylurea receptor 2 Antibody, CMD10 Antibody, ABC37 Antibody, ATP-binding cassette transporter sub-family C member 9 Antibody, Sulfonylurea receptor 2A Antibody, isoform SUR2A Antibody

Research Areas

Cancer, Cell Signaling, Cell Structure, Membrane Markers, Neuroscience

Cellular Localization

Membrane

Accession Number

NP_001038185.1

Gene ID

20928

Swiss Prot

P70170

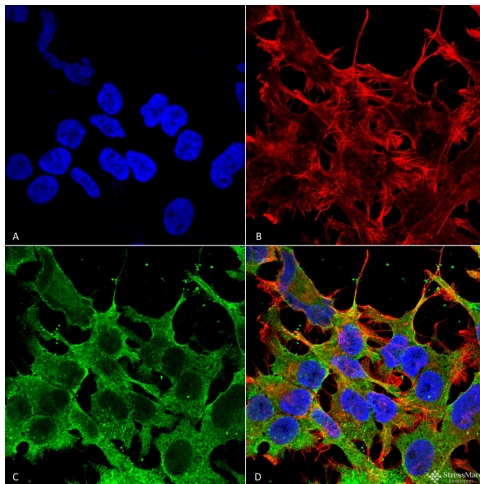
Scientific Background

Sulfonylurea receptors (SUR) are membrane proteins which are the molecular targets of the sulfonylurea class of anti-diabetic drugs whose mechanism of action is to promote insulin release from pancreatic beta cells. More specifically, SUR proteins are subunits of the inward-rectifier potassium ion channels Kir6.x (6.1 and 6.2) (1). The association of four Kir6.x and four SUR subunits form an ion conducting channel commonly referred to as the KATP channel. The primary function of the sulfonylurea receptor is to sense intracellular levels of the nucleotides ATP and ADP and in response facilitate the open or closing its associated Kir6.x potassium channel. Hence the KATP channel monitors the energy balance within the cell (2).

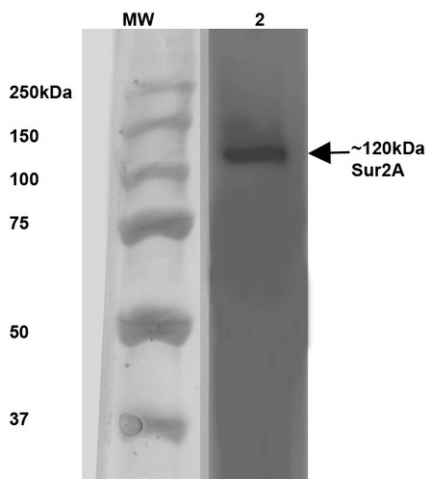
References

1. Campbell J.D., Sansom M.S., Ashcroft F.M. (2003) EMBO Resp. 4(11): 1038-1042.

Product Images



Immunocytochemistry/Immunofluorescence analysis using Mouse Anti-SUR2A Monoclonal Antibody, Clone S319A-14 (SMC-431). Tissue: Neuroblastoma cell line SK-N-BE. Species: Human. Fixation: 4% Formaldehyde for 15 min at RT. Primary Antibody: Mouse Anti-SUR2A Monoclonal Antibody (SMC-431) at 1:100 for 60 min at RT. Secondary Antibody: Goat Anti-Mouse ATTO 488 at 1:100 for 60 min at RT. Counterstain: Phalloidin Texas Red F-Actin stain; DAPI (blue) nuclear stain at 1:1000, 1:5000 for 60min RT, 5min RT. Localization: Membrane. Magnification: 60X. (A) DAPI (blue) nuclear stain (B) Phalloidin Texas Red F-Actin stain (C) SUR2A Antibody (D) Composite.



Western Blot analysis of Rat Brain Membrane showing detection of ~120 kDa SUR2A protein using Mouse Anti-SUR2A Monoclonal Antibody, Clone S319A-14 (SMC-431). Lane 1: MW Ladder. Lane 2: Rat Brain Membrane (10 µg). . Load: 10 µg. Block: 5% milk. Primary Antibody: Mouse Anti-SUR2A Monoclonal Antibody (SMC-431) at 1:1000 for 1 hour at RT. Secondary Antibody: Goat Anti-Mouse IgG: HRP at 1:200 for 1 hour at RT. Color Development: TMB solution for 10 min at RT. Predicted/Observed Size: ~120 kDa.

Product Citations (0)

Currently there are no citations for this product.

Reviews

There are no reviews yet.