



SZABO SCANDIC

Part of Europa Biosite

Produktinformation



Forschungsprodukte & Biochemikalien



Zellkultur & Verbrauchsmaterial



Diagnostik & molekulare Diagnostik



Laborgeräte & Service

Weitere Information auf den folgenden Seiten!
See the following pages for more information!



Lieferung & Zahlungsart

siehe unsere [Liefer- und Versandbedingungen](#)

Zuschläge

- Mindermengenzuschlag
- Trockeneiszuschlag
- Gefahrgutzuschlag
- Expressversand

SZABO-SCANDIC HandelsgmbH

Quellenstraße 110, A-1100 Wien

T. +43(0)1 489 3961-0

F. +43(0)1 489 3961-7

mail@szabo-scandic.com

www.szabo-scandic.com

[linkedin.com/company/szaboscandic](https://www.linkedin.com/company/szaboscandic) 

Anti-GluA1/GluR1 Antibody [S355-1]

Mouse Anti-Rat GluA1/GluR1 Glutamate
Receptor Monoclonal IgG1
Catalog No. SMC-440



Discovery through partnership | Excellence through quality

Overview

Product Name

GluA1/GluR1 Antibody

Description

Mouse Anti-Rat GluA1/GluR1 Glutamate Receptor Monoclonal IgG1

Species Reactivity

Human, Mouse, Rat

Applications

WB, IHC, ICC/IF

Antibody Dilution

WB (1:1000), ICC/IF (1:100); optimal dilutions for assays should be determined by the user.

Host Species

Mouse

Immunogen Species

Rat

Immunogen

Fusion protein amino acids 1-389 (extracellular N-terminus) of rat GluA1/GluR1

Concentration

1 mg/ml

Conjugates

Alkaline Phosphatase, APC, ATTO 390, ATTO 488, ATTO 565, ATTO 594, ATTO 633, ATTO 655, ATTO 680, ATTO 700, Biotin, FITC, HRP, PE/ATTO 594, PerCP, RPE, Streptavidin, Unconjugated

Properties

Storage Buffer

PBS pH 7.4, 50% glycerol, 0.1% sodium azide

Storage Temperature

-20°C

Shipping Temperature

Blue Ice or 4°C

Purification

Protein G Purified

Clonality

Monoclonal

Clone Number

S355-1

Isotype

IgG1

Specificity

Detects ~100kDa. Does not cross-react with GluR2.

Cite This Product

Mouse Anti-Rat GluR1 Monoclonal, Clone S355-1 (StressMarq Biosciences Inc., Victoria BC CANADA, Catalog # SMC-440)

Certificate Of Analysis

1 µg/ml of SMC-440 was sufficient for detection of GluA1/GluR1 in 20 µg of mouse brain membrane lysate and assayed by colorimetric immunoblot analysis using goat anti-mouse IgG:HRP as the secondary antibody.

Biological Description

Alternative Names

AMPA 1 Antibody, AMPA selective glutamate receptor 1 Antibody, Glutamate receptor 1 Antibody, GluA1 Antibody, GLUH 1 Antibody, GluR K1 Antibody, GluRK1 Antibody, Glr-1 Antibody, Glur-1 Antibody, HIPA Antibody, Glur1 Antibody, GluR-A Antibody, A1853806 Antibody, 2900051M01Rik Antibody, GluRA Antibody, Glr1 Antibody, MGC13325 Antibody, GLUH1 Antibody, GluA1 Antibody, GLUR1 Antibody, HBGR1 Antibody,

GLURA Antibody, gluR- Antibody, GluA1 Antibody, Glutamate receptor ionotropic AMPA 1 Antibody, Glutamate receptor ionotropic Antibody, Gria 1 Antibody, HBGR1 Antibody, OTTHUMP00000160643 Antibody, OTTHUMP00000165781 Antibody, OTTHUMP00000224241 Antibody, OTTHUMP00000224242 Antibody, OTTHUMP00000224243 Antibody

Research Areas

AMPA Receptors, Cell Signaling, Glutamate Receptors, Neuroscience, Neurotransmitter Receptors

Cellular Localization

Cell Junction, Cell membrane, Endoplasmic Reticulum

Accession Number

NP_113796

Gene ID

50592

Swiss Prot

P19490

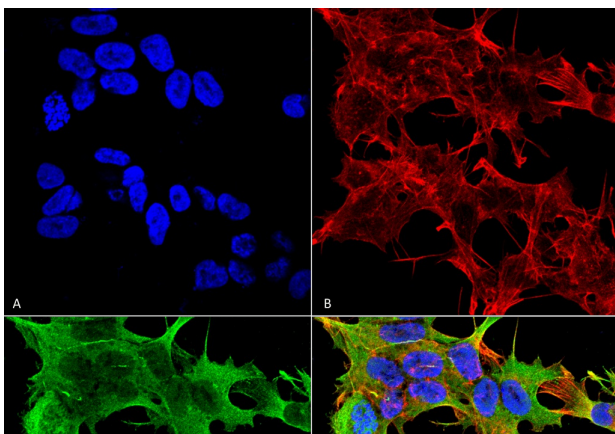
Scientific Background

Glutamic acid is the major excitatory neurotransmitter in the mammalian central nervous system. Glutamate receptors are classified on the basis of their activation by different agonists (1-3). GluR1, human glutamate receptor type 1, is an integral membrane protein that is widely expressed in the human brain. The postsynaptic actions of glutamic acid are mediated by a variety of receptors that are named according to their selective agonists. GluR1 is known to bind a kainate subtype of agonist. It has been found that malfunctioning of the glutamatergic system may result in certain brain disorders and neurodegeneration (3).

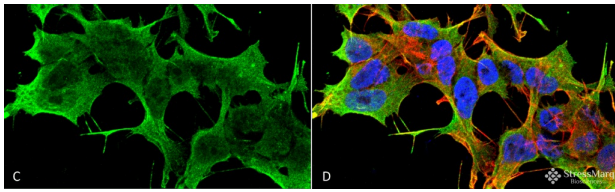
References

1. Potier M.C., Spillantini M.G., Carter N.P. (1992) DNA Seq. 2(4): 211-218.
2. Puckett, C., et al. (1991) Proc. Nat. Acad. Sci. USA 88(17): 7557-7561.
3. Gregor, P., et al. (1993) Proc. Nat. Acad. Sci. USA 90: 3053-3057.

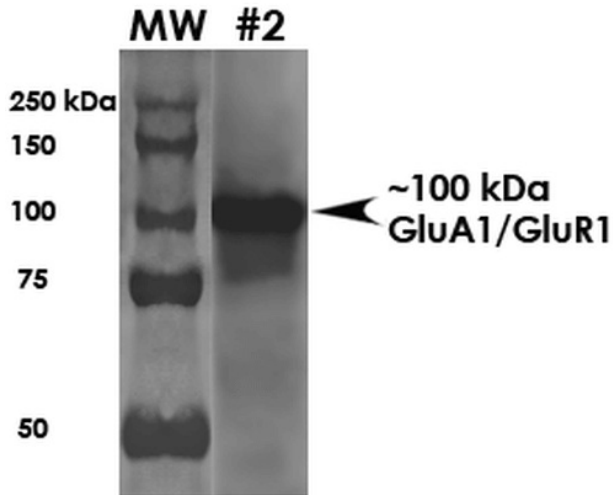
Product Images



Immunocytochemistry/Immunofluorescence analysis using Mouse Anti-GluA1/GluR1 Glutamate Receptor Monoclonal Antibody, Clone S355-1 (SMC-440). Tissue: Neuroblastoma cell line SK-N-BE. Species: Human. Fixation: 4% Formaldehyde for 15 min at RT. Primary Antibody: Mouse Anti-GluA1/GluR1 Glutamate Receptor Monoclonal Antibody (SMC-440) at 1:100 for 60 min at RT. Secondary Antibody: Goat Anti-Mouse ATTO 488 at 1:100 for 60 min at RT. Counterstain: Phalloidin Texas Red F-Actin stain; DAPI (blue) nuclear stain at 1:1000, 1:5000 for 60min RT, 5min RT. Localization: Cell



Membrane, Cell Junction. Magnification: 60X. (A) DAPI (blue) nuclear stain (B) Phalloidin Texas Red F-Actin stain (C) GluA1/GluR1 Glutamate Receptor Antibody (D) Composite.



Western Blot analysis of Rat Brain Membrane showing detection of ~100 kDa GluA1-GluR1 protein using Mouse Anti-GluA1-GluR1 Monoclonal Antibody, Clone S355-1 (SMC-440). Load: 10 μ g. Block: 5% milk + TBST. Primary Antibody: Mouse Anti-GluA1-GluR1 Monoclonal Antibody (SMC-440) at 1:2000 for 1 hour at RT. Secondary Antibody: Goat Anti-Mouse HRP at 1:200 for 1 hour at RT. Predicted/Observed Size: ~100 kDa.

Product Citations (0)

Currently there are no citations for this product.

Reviews

There are no reviews yet.