



SZABO SCANDIC

Part of Europa Biosite

Produktinformation



Forschungsprodukte & Biochemikalien



Zellkultur & Verbrauchsmaterial



Diagnostik & molekulare Diagnostik



Laborgeräte & Service

Weitere Information auf den folgenden Seiten!
See the following pages for more information!



Lieferung & Zahlungsart

siehe unsere [Liefer- und Versandbedingungen](#)

Zuschläge

- Mindermengenzuschlag
- Trockeneiszuschlag
- Gefahrgutzuschlag
- Expressversand

SZABO-SCANDIC HandelsgmbH

Quellenstraße 110, A-1100 Wien

T. +43(0)1 489 3961-0

F. +43(0)1 489 3961-7

mail@szabo-scandic.com

www.szabo-scandic.com

[linkedin.com/company/szaboscandic](https://www.linkedin.com/company/szaboscandic) 

Anti-GFAP Antibody [S206A-8]

Mouse Anti-Human GFAP Monoclonal IgG1
Catalog No. SMC-441



Discovery through partnership | Excellence through quality

Overview

Product Name

GFAP Antibody

Description

Mouse Anti-Human GFAP Monoclonal IgG1

Species Reactivity

Human, Mouse, Rat

Applications

WB, IHC, ICC/IF

Antibody Dilution

WB (1:1000); optimal dilutions for assays should be determined by the user.

Host Species

Mouse

Immunogen Species

Human

Immunogen

Synthetic peptide amino acids 411-422 (KTVMERDGEVIK) of human GFAP; 100% identical in rat and mouse

Concentration

1 mg/ml

Conjugates

Alkaline Phosphatase, APC, ATTO 390, ATTO 488, ATTO 565, ATTO 594, ATTO 633, ATTO 655, ATTO 680, ATTO 700, Biotin, FITC, HRP, PE/ATTO 594, PerCP, RPE, Streptavidin, Unconjugated

Properties

Storage Buffer

PBS pH 7.4, 50% glycerol, 0.1% sodium azide

Storage Temperature

-20°C

Shipping Temperature

Blue Ice or 4°C

Purification

Protein G Purified

Clonality

Monoclonal

Clone Number

S206A-8

Isotype

IgG1

Specificity

Detects ~50kDa. Cross-reacts with GFAP-R416W and other GFAP mutant proteins.

Cite This Product

Mouse Anti-Human GFAP Monoclonal, Clone S206A-8 (StressMarq Biosciences Inc., Victoria BC CANADA, Catalog # SMC-441)

Certificate Of Analysis

1 µg/ml of SMC-441 was sufficient for detection of GFAP in 20 µg of rat brain lysate by colorimetric immunoblot analysis using Goat anti-mouse IgG:HRP as the secondary antibody.

Biological Description

Alternative Names

Glial fibrillary acidic protein Antibody, Intermediate filament protein Antibody, Astrocyte Antibody, gfapl Antibody, DKFZp459C0729 Antibody, MGC139638 Antibody, FLJ45472 Antibody, AI836096 Antibody, GFAP Antibody

Research Areas

Astrocyte Markers, Cell Structure, Neuroscience

Cellular Localization

Cytoplasm

Accession Number

NP_001124491.1

Gene ID

2670

Swiss Prot

P14136

Scientific Background

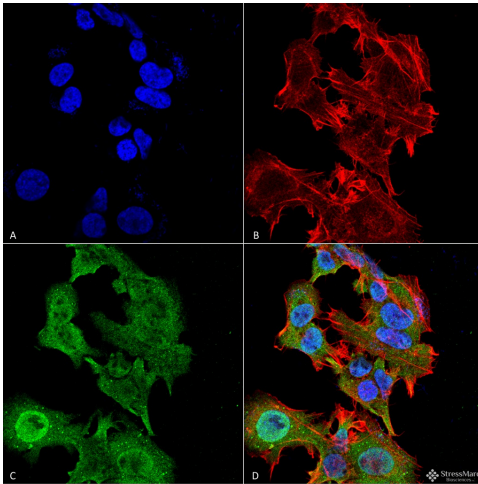
The 50 kDa type III intermediate filament protein glial fibrillary acidic protein (GFAP) is a major structural component of astrocytes. GFAP associates with the calcium binding protein annexin II-p2 and S-100. Association with these proteins together with phosphorylation regulates GFAP polymerization. Astrocytes respond to brain injury by proliferating (astrogliosis), and one of the first events to occur during astrocyte proliferation is increased GFAP expression. Interestingly, antibodies to GFAP have been detected in individuals with dementia.

References

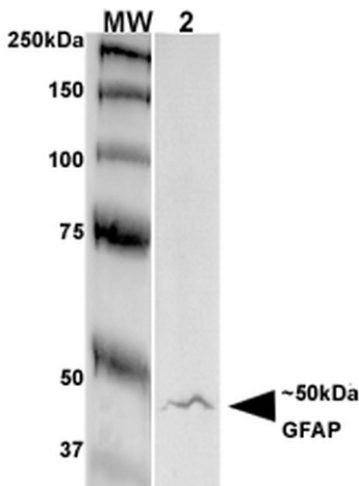
1. Velasco M.E., et al. (1980) Cancer. 45:484.
2. Bonnin J.M., et al. (1984) Acta Neuropathology. 62:185.

3. Lee VM-Y., et al. (1984) J. Neurochem. 42:25-32 (1984).
4. Trojanowski JQ et al. (1986) J. Neurochem. 6(3): 650-660 (1986).
5. Schmidt ML et al; Lab Invest 56:282-294 (1987).
6. Kosik KS et al; Neuron 1:817-825 (1988).
7. Schmidt ML et al; Lab Invest 59:460-466 (1988).
8. Mokuna, K, et al; J Neurosci Res 23:396 (1989).
9. Molenaar, et al; Exp Neurology 108:1-9 (1990).
10. Tohyama T et al; Am J Pathol, 142:871-882 (1993).
11. Tohyama T et al; Am J Pathol 142:883-892 (1993).
12. Thilenius, A.R.B., et al; J. Immunol. 162(2): 643-650 (1999).

Product Images



Immunocytochemistry/Immunofluorescence analysis using Mouse Anti-GFAP Monoclonal Antibody, Clone S206A-8 (SMC-441). Tissue: Neuroblastoma cell line SK-N-BE. Species: Human. Fixation: 4% Formaldehyde for 15 min at RT. Primary Antibody: Mouse Anti-GFAP Monoclonal Antibody (SMC-441) at 1:100 for 60 min at RT. Secondary Antibody: Goat Anti-Mouse ATTO 488 at 1:100 for 60 min at RT. Counterstain: Phalloidin Texas Red F-Actin stain; DAPI (blue) nuclear stain at 1:1000, 1:5000 for 60min RT, 5min RT. Localization: Cytoplasm . Magnification: 60X. (A) DAPI (blue) nuclear stain (B) Phalloidin Texas Red F-Actin stain (C) GFAP Antibody (D) Composite.



Western Blot analysis of Rat Brain Membrane showing detection of GFAP protein using Mouse Anti-GFAP Monoclonal Antibody, Clone S206A-8 (SMC-441). Primary Antibody: Mouse Anti-GFAP Monoclonal Antibody (SMC-441) at 1:250.

Product Citations (0)

Currently there are no citations for this product.

Reviews

There are no reviews yet.