



# SZABO SCANDIC

Part of Europa Biosite

## Produktinformation



Forschungsprodukte & Biochemikalien



Zellkultur & Verbrauchsmaterial



Diagnostik & molekulare Diagnostik



Laborgeräte & Service

Weitere Information auf den folgenden Seiten!  
See the following pages for more information!



### Lieferung & Zahlungsart

siehe unsere [Liefer- und Versandbedingungen](#)

### Zuschläge

- Mindermengenzuschlag
- Trockeneiszuschlag
- Gefahrgutzuschlag
- Expressversand

### SZABO-SCANDIC HandelsgmbH

Quellenstraße 110, A-1100 Wien

T. +43(0)1 489 3961-0

F. +43(0)1 489 3961-7

[mail@szabo-scandic.com](mailto:mail@szabo-scandic.com)

[www.szabo-scandic.com](http://www.szabo-scandic.com)

[linkedin.com/company/szaboscandic](https://www.linkedin.com/company/szaboscandic) 

## Anti-LAR/PTPRF Antibody [S165-38]

Mouse Anti-Human LAR/PTPRF Monoclonal IgG2a  
Catalog No. SMC-443



Discovery through partnership | Excellence through quality

### Overview

---

#### Product Name

LAR/PTPRF Antibody

#### Description

Mouse Anti-Human LAR/PTPRF Monoclonal IgG2a

#### Species Reactivity

Human, Mouse, Rat

#### Applications

WB, ICC/IF

#### Antibody Dilution

WB (1:1000); optimal dilutions for assays should be determined by the user.

#### Host Species

Mouse

#### Immunogen Species

Human

#### Immunogen

Fusion protein amino acids 1315-1607 (cytoplasmic C-terminus) of human LAR. 97% identical in both rat and mouse. >80% identity with PTPRD and PTPRS. >50% identity with PTPRM and PTPRK.

#### Concentration

1 mg/ml

#### Conjugates

Alkaline Phosphatase, APC, ATTO 390, ATTO 488, ATTO 565, ATTO 594, ATTO 633, ATTO 655, ATTO 680, ATTO 700, Biotin, FITC, HRP, PE/ATTO 594, PerCP, RPE, Streptavidin, Unconjugated

### Properties

---

#### Storage Buffer

PBS pH 7.4, 50% glycerol, 0.1% sodium azide

#### Storage Temperature

-20°C

#### Shipping Temperature

Blue Ice or 4°C

#### Purification

---

Protein G Purified

---

**Clonality**

Monoclonal

---

**Clone Number**

S165-38

---

**Isotype**

IgG2a

---

**Specificity**

Detects ~85kDa (full length protein is 210 kDa smaller due to proteolysis into P-subunit containing transmembrane and intracellular domains.

---

**Cite This Product**

Mouse Anti-Human LAR Monoclonal, Clone S165-38 (StressMarq Biosciences Inc., Victoria BC CANADA, Catalog # SMC-443)

---

**Certificate Of Analysis**

1 µg/ml of SMC-443 was sufficient for detection of LAR/PTPRF in 20 µg of rat brain lysate by colorimetric immunoblot analysis using Goat anti-mouse IgG:HRP as the secondary antibody.

---

**Biological Description**

---

**Alternative Names**

FLJ43335 Antibody, FLJ45062 Antibody, FLJ45567 Antibody, LAR Antibody, LAR protein Antibody, LARFN5C Antibody, LARS Antibody, LCA homolog Antibody, Leukocyte antigen related (LAR) PTP receptor Antibody, Leukocyte antigen related Antibody, Leukocyte antigen related PTP receptor Antibody, Leukocyte antigen related tyrosine phosphatase Antibody, Leukocyte common antigen related Antibody, Protein Tyrosine Phosphatase Receptor Type F Antibody, Protein tyrosine phosphatase receptor type F polypeptide Antibody, PTPRF protein Antibody, Receptor linked phosphatase LAR Antibody, Receptor type tyrosine protein phosphatase F Antibody, Receptor type tyrosine protein phosphatase F precursor Antibody, Receptor-type tyrosine-protein phosphatase F Antibody

---

**Research Areas**

Cell Signaling, Cell Structure, Neuroscience, Phosphorylation, Post-translational Modifications

---

**Cellular Localization**

Membrane

---

**Accession Number**

NP\_002831.2.

---

**Gene ID**

5792

---

**Swiss Prot**

P10586

---

**Scientific Background**

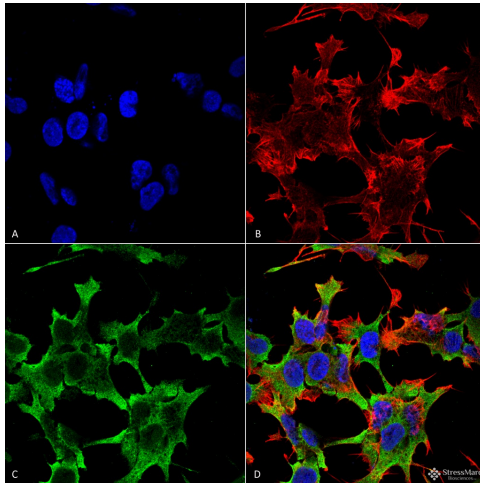
PTPRF or leukocyte common antigen-related protein (LAR) is a widely expressed protein tyrosine phosphatase with an extracellular receptor region that resembles a cell adhesion molecule. PTPRF removes phosphate group from  $\beta$ -catenin, an event that may subsequently facilitate cell-cell adhesion and ensure the stability of the cadherin complex. This phosphatase has also been

implicated in various cellular processes such as neurite growth, nerve regeneration, actin remodeling and regulation of insulin function (1,2,3,4). Anti-PTPRF (C-terminal) antibody is specific for the extracellular and cytoplasmic subunits of human PTPRF (approx. 210, 150 and 85 kDa). Detection of the PTPRF bands by immunoblotting is specifically inhibited by the immunizing peptide.

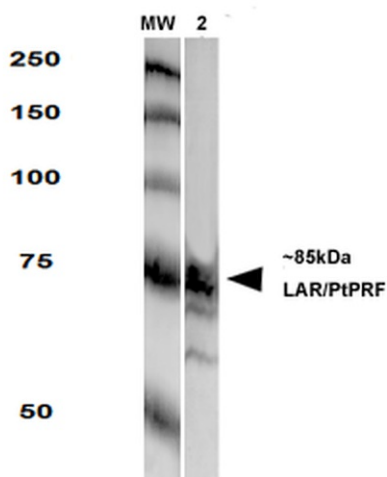
## References

1. Streuli M. M., et al. (1992) EMBO Journal, 11(3), 897-907.
2. Mooney R.A. and C.M LeVea. (2003) Current Topics in Medicinal Chemistry, 3(7), 809-819.
3. Chagnon M.J., et al. (2004) Biochemistry and Cell Biology, 82(6), 664-675.
4. Ahmad F.F., and B.J. Goldstein (1997) Journal of Biological Chemistry, 272(1), 448-457.

## Product Images



Immunocytochemistry/Immunofluorescence analysis using Mouse Anti-LAR/PTPRF Monoclonal Antibody, Clone S165-38 (SMC-443). Tissue: Neuroblastoma cell line SK-N-BE. Species: Human. Fixation: 4% Formaldehyde for 15 min at RT. Primary Antibody: Mouse Anti-LAR/PTPRF Monoclonal Antibody (SMC-443) at 1:100 for 60 min at RT. Secondary Antibody: Goat Anti-Mouse ATTO 488 at 1:100 for 60 min at RT. Counterstain: Phalloidin Texas Red F-Actin stain; DAPI (blue) nuclear stain at 1:1000, 1:5000 for 60min RT, 5min RT. Localization: Membrane. Magnification: 60X. (A) DAPI (blue) nuclear stain (B) Phalloidin Texas Red F-Actin stain (C) LAR/PTPRF Antibody (D) Composite.



Western Blot analysis of Rat Brain Membrane showing detection of LAR protein using Mouse Anti-LAR Monoclonal Antibody, Clone S165-38 (SMC-443). Primary Antibody: Mouse Anti-LAR Monoclonal Antibody (SMC-443) at 1:250.

## Product Citations (0)

Currently there are no citations for this product.

## Reviews

There are no reviews yet.