



SZABO SCANDIC

Part of Europa Biosite

Produktinformation



Forschungsprodukte & Biochemikalien



Zellkultur & Verbrauchsmaterial



Diagnostik & molekulare Diagnostik



Laborgeräte & Service

Weitere Information auf den folgenden Seiten!
See the following pages for more information!



Lieferung & Zahlungsart

siehe unsere [Liefer- und Versandbedingungen](#)

Zuschläge

- Mindermengenzuschlag
- Trockeneiszuschlag
- Gefahrgutzuschlag
- Expressversand

SZABO-SCANDIC HandelsgmbH

Quellenstraße 110, A-1100 Wien

T. +43(0)1 489 3961-0

F. +43(0)1 489 3961-7

mail@szabo-scandic.com

www.szabo-scandic.com

[linkedin.com/company/szaboscandic](https://www.linkedin.com/company/szaboscandic) 

Anti-LRRK2/Dardarin Antibody [S138-6]

Mouse Anti-Human LRRK2/Dardarin Monoclonal IgG1
Catalog No. SMC-446



Discovery through partnership | Excellence through quality

Overview

Product Name

LRRK2/Dardarin Antibody

Description

Mouse Anti-Human LRRK2/Dardarin Monoclonal IgG1

Species Reactivity

Human, Mouse, Rat

Applications

WB, ICC/IF

Antibody Dilution

WB (1:1000); optimal dilutions for assays should be determined by the user.

Host Species

Mouse

Immunogen Species

Human

Immunogen

Fusion protein, amino acids 1-500 (N-terminus) of human LRRK2. 83% identical in mouse and rat. No significant identity with LRRK1.

Concentration

1 mg/ml

Conjugates

Alkaline Phosphatase, APC, ATTO 390, ATTO 488, ATTO 565, ATTO 594, ATTO 633, ATTO 655, ATTO 680, ATTO 700, Biotin, FITC, HRP, PE/ATTO 594, PerCP, RPE, Streptavidin, Unconjugated

Properties

Storage Buffer

PBS pH 7.4, 50% glycerol, 0.1% sodium azide

Storage Temperature

-20°C

Shipping Temperature

Blue Ice or 4°C

Purification

Protein G Purified

Clonality

Monoclonal

Clone Number

S138-6

Isotype

IgG1

Specificity

Detects >~200kDa.

Cite This Product

Mouse Anti-Human LRRK2 Monoclonal, Clone S138-6 (StressMarq Biosciences Inc., Victoria BC CANADA, Catalog # SMC-446)

Certificate Of Analysis

1 µg/ml of SMC-446 was sufficient for detection of LRRK2/Dardarin in 20 µg of rat brain lysate by colorimetric immunoblot analysis using Goat anti-mouse IgG:HRP as the secondary antibody.

Biological Description

Alternative Names

Leucine-rich repeat kinase 2 Antibody, RIP7 Antibody, PARK8 Antibody, Dardarin Antibody, ROCO 2 Antibody, RIPK7 Antibody, Leucine-rich repeat serine/threonine-protein kinase 2 Antibody, augmented in rheumatoid arthritis 17 Antibody

Research Areas

Cell Signaling, Neurodegeneration, Neuroscience, Parkinson's Disease, Phosphorylation, Post-translational modification

Cellular Localization

Cytoplasm, Axon, Cell projection, Cytoplasmic Vesicle, Dendrite, Endoplasmic Reticulum, Endosome, Golgi apparatus, Lysosome, Membrane, Mitochondrion

Accession Number

NP_940980

Gene ID

120892

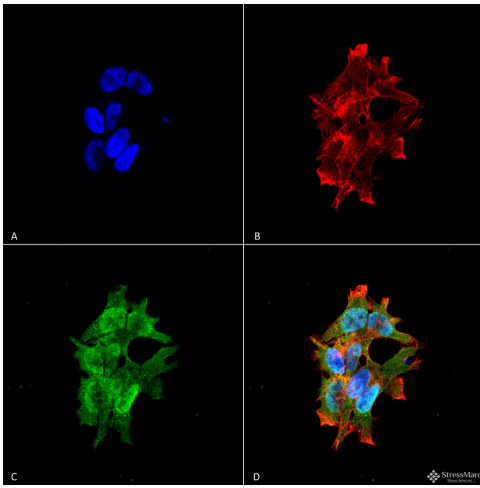
Swiss Prot

Q5S007

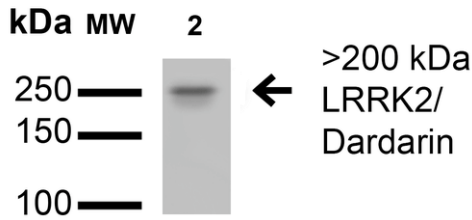
Scientific Background

LRRK2 is a large protein with multiple domains including several ankyrin, leucine-rich, and WD40 repeats, a Ras-like small GTPase family domain named Roc, and a kinase domain that is closely related to the RIP kinase domain. LRRK2 gene is expressed in brain as well as in other tissues such as lung, liver and heart. LRRK2 might be central to the pathogenesis of several major neurodegenerative diseases associated with parkinsonism. Several dominantly inherited missense mutations in the gene encoding LRRK2 have been identified in several families that exhibit a broad spectrum of neuropathological features.

Product Images



Immunocytochemistry/Immunofluorescence analysis using Mouse Anti-LRRK2/Dardarin Monoclonal Antibody, Clone S138-6 (SMC-446). Tissue: Neuroblastoma cell line SK-N-BE. Species: Human. Fixation: 4% Formaldehyde for 15 min at RT. Primary Antibody: Mouse Anti-LRRK2/Dardarin Monoclonal Antibody (SMC-446) at 1:100 for 60 min at RT. Secondary Antibody: Goat Anti-Mouse ATTO 488 at 1:100 for 60 min at RT. Counterstain: Phalloidin Texas Red F-Actin stain; DAPI (blue) nuclear stain at 1:1000; 1:5000 for 60 min RT, 5 min RT. Localization: Cytoplasm, Membrane, Nucleus. Magnification: 60X. (A) DAPI (blue) nuclear stain (B) Phalloidin Texas Red F-Actin stain (C) LRRK2/Dardarin Antibody (D) Composite.



Western Blot analysis of Rat Brain Membrane showing detection of >200 kDa LRRK2/Dardarin protein using Mouse Anti-LRRK2/Dardarin Monoclonal Antibody, Clone S138-6 (SMC-446). Lane 1: Molecular Weight Ladder. Lane 2: Rat Brain Membrane. Load: 15 μ g. Block: 2% BSA and 2% Skim Milk in 1X TBST. Primary Antibody: Mouse Anti-LRRK2/Dardarin Monoclonal Antibody (SMC-446) at 1:200 for 16 hours at 4°C. Secondary Antibody: Goat Anti-Mouse IgG: HRP at 1:1000 for 1 hour RT. Color Development: ECL solution for 6 min in RT. Predicted/Observed Size: >200 kDa.

Product Citations (0)

Currently there are no citations for this product.

Reviews

There are no reviews yet.