



SZABO SCANDIC

Part of Europa Biosite

Produktinformation



Forschungsprodukte & Biochemikalien



Zellkultur & Verbrauchsmaterial



Diagnostik & molekulare Diagnostik



Laborgeräte & Service

Weitere Information auf den folgenden Seiten!
See the following pages for more information!



Lieferung & Zahlungsart

siehe unsere [Liefer- und Versandbedingungen](#)

Zuschläge

- Mindermengenzuschlag
- Trockeneiszuschlag
- Gefahrgutzuschlag
- Expressversand

SZABO-SCANDIC HandelsgmbH

Quellenstraße 110, A-1100 Wien

T. +43(0)1 489 3961-0

F. +43(0)1 489 3961-7

mail@szabo-scandic.com

www.szabo-scandic.com

[linkedin.com/company/szaboscandic](https://www.linkedin.com/company/szaboscandic) 

Anti-ATF4 Antibody [S360A-24]

Mouse Anti-Human ATF4 Monoclonal IgG2a
Catalog No. SMC-447



Discovery through partnership | Excellence through quality

Overview

Product Name

ATF4 Antibody

Description

Mouse Anti-Human ATF4 Monoclonal IgG2a

Species Reactivity

Human, Rat

Applications

WB, IHC, ICC/IF

Antibody Dilution

WB (1:1000); optimal dilutions for assays should be determined by the user.

Host Species

Mouse

Immunogen Species

Human

Immunogen

Fusion protein amino acids 25-327 of human ATF4. 86% identical to rat, and 85% identical to mouse. <50% identity with ATF5.

Concentration

1 mg/ml

Conjugates

Alkaline Phosphatase, APC, ATTO 390, ATTO 488, ATTO 565, ATTO 594, ATTO 633, ATTO 655, ATTO 680, ATTO 700, Biotin, FITC, HRP, PE/ATTO 594, PerCP, RPE, Streptavidin, Unconjugated

Properties

Storage Buffer

PBS pH 7.4, 50% glycerol, 0.1% sodium azide

Storage Temperature

-20°C

Shipping Temperature

Blue Ice or 4°C

Purification

Protein G Purified

Clonality

Monoclonal

Clone Number

S360A-24

Isotype

IgG2a

Specificity

Detects ~60kDa. Does not cross-react with ATF5.

Cite This Product

Mouse Anti-Human ATF4 Monoclonal, Clone S360A-24 (StressMarq Biosciences Inc., Victoria BC CANADA, Catalog # SMC-447)

Certificate Of Analysis

1 µg/ml of SMC-447 was sufficient for detection of ATF4 in 20 µg of rat brain lysate by colorimetric immunoblot analysis using Goat anti-mouse IgG:HRP as the secondary antibody.

Biological Description

Alternative Names

Activating Transcription Factor 4 Antibody, ATF 4 Antibody, ATF4 protein Antibody, cAMP-dependent transcription factor ATF-4 Antibody, cAMP-responsive element-binding protein 2 Antibody, CREB 2 Antibody, CREB-2 Antibody, CREB2 Antibody, Cyclic AMP dependent transcription factor ATF 4 Antibody, Cyclic AMP response element binding protein 2 Antibody, Cyclic AMP response element binding protein 2 Antibody, Cyclic AMP-dependent transcription factor ATF-4 Antibody, Cyclic AMP-responsive element-binding protein 2 Antibody, DNA binding protein TAXREB67 Antibody, DNA binding protein TAXREB67 Antibody, DNA-binding protein TAXREB67 Antibody, Tax Responsive Enhancer Element B67 Antibody, Tax-responsive enhancer element-binding protein 67 Antibody, TAXREB67 Antibody, TXREB Antibody

Research Areas

Cell Signaling, Epigenetics, Neuroscience

Cellular Localization

Cytoplasm, Cell membrane, Nucleus

Accession Number

NP_001666.2

Gene ID

468

Swiss Prot

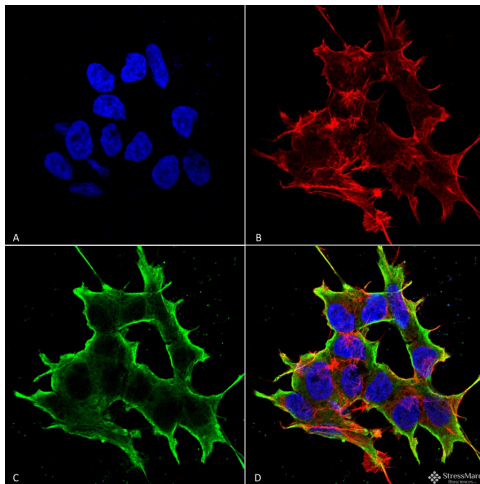
P18848

Scientific Background

Cyclic AMP-dependent transcription factor ATF-4 (ATF4) is a basic leucine-zipper (bZip) transcription factor, which regulates amino acid metabolism, DNA damage repair, chromatin remodeling, and apoptosis in response to cellular and ER stress. ATF4 works with various proteins, such as C/EBP homology protein (CHOP), asparagine synthetase (ASNS), and cAMP response element (CRE) among others to mediate cellular stress. ATF4 also regulates glucose homeostasis by suppressing beta-cell proliferation and insulin

production. Furthermore, ATF4 targets the histone demethylase JMJD3 to alter chromatin structure and enhance gene transcription in response to amino acid deprivation.

Product Images



Immunocytochemistry/Immunofluorescence analysis using Mouse Anti-ATF4 Monoclonal Antibody, Clone S360A-24 (SMC-447). Tissue: Neuroblastoma cell line SK-N-BE. Species: Human. Fixation: 4% Formaldehyde for 15 min at RT. Primary Antibody: Mouse Anti-ATF4 Monoclonal Antibody (SMC-447) at 1:100 for 60 min at RT. Secondary Antibody: Goat Anti-Mouse ATTO 488 at 1:100 for 60 min at RT. Counterstain: Phalloidin Texas Red F-Actin stain; DAPI (blue) nuclear stain at 1:1000; 1:5000 for 60 min RT, 5 min RT. Localization: Cytoplasm, Cell Membrane. Magnification: 60X. (A) DAPI (blue) nuclear stain (B) Phalloidin Texas Red F-Actin stain (C) ATF4 Antibody (D) Composite.

Product Citations (0)

Currently there are no citations for this product.

Reviews

There are no reviews yet.