



# SZABO SCANDIC

Part of Europa Biosite

## Produktinformation



Forschungsprodukte & Biochemikalien



Zellkultur & Verbrauchsmaterial



Diagnostik & molekulare Diagnostik



Laborgeräte & Service

Weitere Information auf den folgenden Seiten!  
See the following pages for more information!



### Lieferung & Zahlungsart

siehe unsere [Liefer- und Versandbedingungen](#)

### Zuschläge

- Mindermengenzuschlag
- Trockeneiszuschlag
- Gefahrgutzuschlag
- Expressversand

### SZABO-SCANDIC HandelsgmbH

Quellenstraße 110, A-1100 Wien

T. +43(0)1 489 3961-0

F. +43(0)1 489 3961-7

[mail@szabo-scandic.com](mailto:mail@szabo-scandic.com)

[www.szabo-scandic.com](http://www.szabo-scandic.com)

[linkedin.com/company/szaboscandic](https://www.linkedin.com/company/szaboscandic) 

## Anti-Ataxin 1 Antibody [S76-8]

Mouse Anti-Mouse Ataxin 1 Monoclonal IgG2b  
Catalog No. SMC-455



Discovery through partnership | Excellence through quality

### Overview

---

#### Product Name

Ataxin 1 Antibody

#### Description

Mouse Anti-Mouse Ataxin 1 Monoclonal IgG2b

#### Species Reactivity

Human, Mouse, Rat

#### Applications

WB, IHC, IP

#### Antibody Dilution

WB (1:1000); optimal dilutions for assays should be determined by the user.

#### Host Species

Mouse

#### Immunogen Species

Mouse

#### Immunogen

Synthetic peptide amino acids 164-197 (ATTPSQRSQLEAYSTLLANMGSLSQAPGHKVEPP) of mouse Ataxin-1. Rat: 100% identity (34/34 amino acids identical). Human: 88% identity (30/34 amino acids identical).

#### Concentration

1 mg/ml

#### Conjugates

Alkaline Phosphatase, APC, ATTO 390, ATTO 488, ATTO 565, ATTO 594, ATTO 633, ATTO 655, ATTO 680, ATTO 700, Biotin, FITC, HRP, PE/ATTO 594, PerCP, RPE, Streptavidin, Unconjugated

### Properties

---

#### Storage Buffer

PBS pH 7.4, 50% glycerol, 0.1% sodium azide

#### Storage Temperature

-20°C

#### Shipping Temperature

Blue Ice or 4°C

#### Purification

---

Protein G Purified

---

**Clonality**

Monoclonal

---

**Clone Number**

S76-8

---

**Isotype**

IgG2b

---

**Specificity**

Detects ~85kDa.

---

**Cite This Product**

Mouse Anti-Mouse Ataxin 1 Monoclonal, Clone S76-8 (StressMarq Biosciences Inc., Victoria BC CANADA, Catalog # SMC-455)

---

**Certificate Of Analysis**

1 µg/ml of SMC-455 was sufficient for detection of Ataxin-1 in 20 µg of rat brain lysate by colorimetric immunoblot analysis using Goat anti-mouse IgG:HRP as the secondary antibody.

---

**Biological Description**

---

**Alternative Names**

Ataxin-1 Antibody, ATX1 Antibody, Atxn1 Antibody, D6S504E Antibody, OTTHUMP00000016065 Antibody, SCA1 Antibody, Spinocerebellar ataxia type 1 protein Antibody

---

**Research Areas**

Cell Signaling, Epigenetics, Neurodegeneration, Neuroscience

---

**Cellular Localization**

Cytoplasm, Nucleus

---

**Accession Number**

NP\_001186233.1

---

**Gene ID**

20238

---

**Swiss Prot**

P54254

---

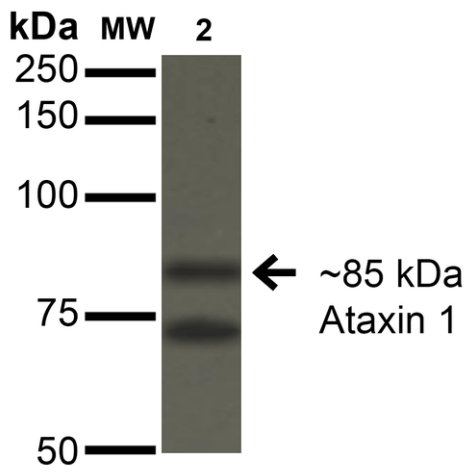
**Scientific Background**

Ataxin-1 is a member of the ATXN1 protein family and contains a single AXH domain. It is a neurodegenerative disorder protein thought to have a role in the metabolism of RNA as it has been shown to localize to the RNA and transcription dependent inclusions within the nucleus. A mutation of Ataxin-1 is the cause of spinocerebellar ataxia type-1 (SCA1), a progressive, neurodegenerative disease that is autosomal dominant and primarily affects the Purkinje cells found in brain stem neuronal populations and the cerebellum. Expression of Ataxin-1 is almost ubiquitous, except in the brain where it is isolated to populations of neurons.

---

**Product Images**

---



Western Blot analysis of Monkey COS-1 cells transfected with Ataxin-1 showing detection of ~85 kDa Ataxin 1 protein using Mouse Anti-Ataxin 1 Monoclonal Antibody, Clone S76-8 (SMC-455). Lane 1: Molecular Weight Ladder. Lane 2: Monkey COS-1 cells transfected with Ataxin-1. Load: 15  $\mu$ g. Block: 2% BSA and 2% Skim Milk in 1X TBST. Primary Antibody: Mouse Anti-Ataxin 1 Monoclonal Antibody (SMC-455) at 1:200 for 16 hours at 4°C. Secondary Antibody: Goat Anti-Mouse IgG: HRP at 1:1000 for 1 hour RT. Color Development: ECL solution for 6 min in RT. Predicted/Observed Size: ~85 kDa.

## Product Citations (0)

---

Currently there are no citations for this product.

## Reviews

---

There are no reviews yet.