



# SZABO SCANDIC

Part of Europa Biosite

## Produktinformation



Forschungsprodukte & Biochemikalien



Zellkultur & Verbrauchsmaterial



Diagnostik & molekulare Diagnostik



Laborgeräte & Service

Weitere Information auf den folgenden Seiten!  
See the following pages for more information!



### Lieferung & Zahlungsart

siehe unsere [Liefer- und Versandbedingungen](#)

### Zuschläge

- Mindermengenzuschlag
- Trockeneiszuschlag
- Gefahrgutzuschlag
- Expressversand

### SZABO-SCANDIC HandelsgmbH

Quellenstraße 110, A-1100 Wien

T. +43(0)1 489 3961-0

F. +43(0)1 489 3961-7

[mail@szabo-scandic.com](mailto:mail@szabo-scandic.com)

[www.szabo-scandic.com](http://www.szabo-scandic.com)

[linkedin.com/company/szaboscandic](https://www.linkedin.com/company/szaboscandic) 

# Anti-Mitofusin 2 Antibody [S153-5]

Mouse Anti-Human Mitofusin 2 Monoclonal IgG2a  
Catalog No. SMC-457



Discovery through partnership | Excellence through quality

## Overview

---

### Product Name

Mitofusin 2 Antibody

### Description

Mouse Anti-Human Mitofusin 2 Monoclonal IgG2a

### Species Reactivity

Human, Mouse, Rat

### Applications

WB, IHC, ICC/IF

### Antibody Dilution

WB (1:1000), ICC/IF (1:100); optimal dilutions for assays should be determined by the user.

### Host Species

Mouse

### Immunogen Species

Human

### Immunogen

Fusion protein amino acids 370-600 (cytoplasmic N-terminus) of mouse Mitofusin-2. Rat: 97% identity (226/231 amino acids identical). Human: 92% identity (214/231 amino acids identical) ~55% identity with Mitofusin-1.

### Concentration

1 mg/ml

### Conjugates

Alkaline Phosphatase, APC, ATTO 390, ATTO 488, ATTO 565, ATTO 594, ATTO 633, ATTO 655, ATTO 680, ATTO 700, Biotin, FITC, HRP, PE/ATTO 594, PerCP, RPE, Streptavidin, Unconjugated

## Properties

---

### Storage Buffer

PBS pH 7.4, 50% glycerol, 0.1% sodium azide

### Storage Temperature

-20°C

### Shipping Temperature

Blue Ice or 4°C

### Purification

---

Protein G Purified

---

**Clonality**

Monoclonal

---

**Clone Number**

S153-5

---

**Isotype**

IgG2a

---

**Specificity**

Detects ~90kDa. No cross-reactivity against Mitofusin-1.

---

**Cite This Product**

Mouse Anti-Human Mitofusin 2 Monoclonal, Clone S153-5 (StressMarq Biosciences Inc., Victoria BC CANADA, Catalog # SMC-457)

---

**Certificate Of Analysis**

1 µg/ml of SMC-457 was sufficient for detection of Mitofusin-2 in 20 µg of mouse cardiac mitochondrial lysate by colorimetric immunoblot analysis using Goat anti-mouse IgG:HRP as the secondary antibody.

---

**Biological Description**

---

**Alternative Names**

CMT2A Antibody, CMT2A2 Antibody, CPRP 1 Antibody, CPRP1 Antibody, Fzo Antibody, HSG Antibody, hyperplasia suppressor gene Antibody, Hypertension related protein 1 Antibody, KIAA0214 Antibody, MARF Antibody, MFN 2 Antibody, Mfn2 Antibody, Mitochondrial assembly regulatory factor Antibody, Mitofusin-2 Antibody, Mitofusin2 Antibody, Transmembrane GTPase MFN2 Antibody

---

**Research Areas**

Cancer, Apoptosis, Cell Signaling, Cell Structure, Neurodegeneration, Neuroscience

---

**Cellular Localization**

Mitochondrion, Mitochondrion outer membrane

---

**Accession Number**

NP\_573464.2

---

**Gene ID**

170731

---

**Swiss Prot**

Q80U63

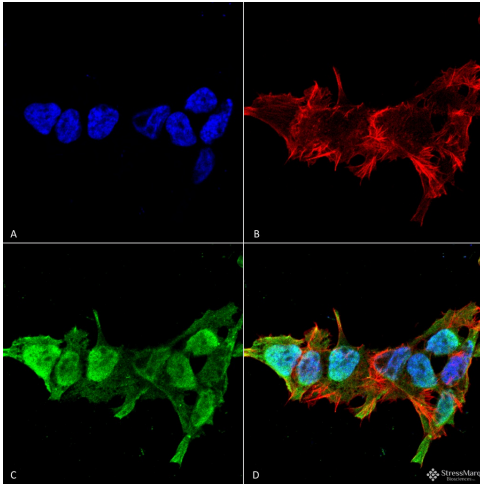
---

**Scientific Background**

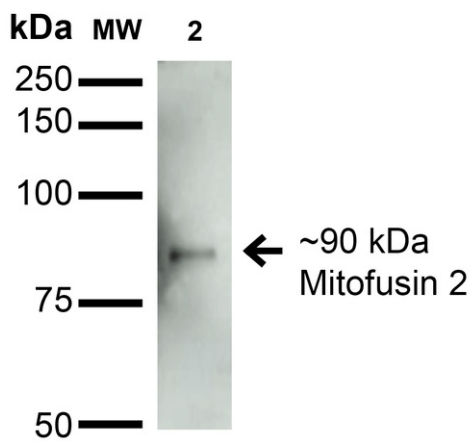
Mitofusin-2 (Mfn2) is a membrane protein of the mitochondria and is important in mitochondrial fusion in mammalian cells. Mfn2 activity has also been implicated in mitochondrial metabolism and the loss of Mfn2 may be the reason for certain metabolic modifications that are seen in individuals with obesity. Mfn2 has been associated with maintaining the membrane potential of the mitochondria. Mfn2 has been shown to hinder mitochondrial antiviral signaling by inhibiting production of type 1 interferons. Mfn2 is a p53-inducible target and involved in cell proliferation, apoptosis promotion and tumor suppression.

---

**Product Images**



Immunocytochemistry/Immunofluorescence analysis using Mouse Anti-Mitofusin 2 Monoclonal Antibody, Clone S153-5 (SMC-457). Tissue: Neuroblastoma cell line SK-N-BE. Species: Human. Fixation: 4% Formaldehyde for 15 min at RT. Primary Antibody: Mouse Anti-Mitofusin 2 Monoclonal Antibody (SMC-457) at 1:100 for 60 min at RT. Secondary Antibody: Goat Anti-Mouse ATTO 488 at 1:100 for 60 min at RT. Counterstain: Phalloidin Texas Red F-Actin stain; DAPI (blue) nuclear stain at 1:1000; 1:5000 for 60 min RT, 5 min RT. Localization: Cytoplasm, Nucleus. Magnification: 60X. (A) DAPI (blue) nuclear stain (B) Phalloidin Texas Red F-Actin stain (C) Mitofusin 2 Antibody (D) Composite.



Western Blot analysis of Rat Brain Membrane showing detection of ~90 kDa Mitofusin 2 protein using Mouse Anti-Mitofusin 2 Monoclonal Antibody, Clone S153-5 (SMC-457). Lane 1: Molecular Weight Ladder. Lane 2: Rat Brain Membrane. Load: 15  $\mu$ g. Block: 2% BSA and 2% Skim Milk in 1X TBST. Primary Antibody: Mouse Anti-Mitofusin 2 Monoclonal Antibody (SMC-457) at 1:200 for 16 hours at 4°C. Secondary Antibody: Goat Anti-Mouse IgG: HRP at 1:1000 for 1 hour RT. Color Development: ECL solution for 6 min in RT. Predicted/Observed Size: ~90 kDa.

## Product Citations (0)

Currently there are no citations for this product.

## Reviews

There are no reviews yet.