



# SZABO SCANDIC

Part of Europa Biosite

## Produktinformation



Forschungsprodukte & Biochemikalien



Zellkultur & Verbrauchsmaterial



Diagnostik & molekulare Diagnostik



Laborgeräte & Service

Weitere Information auf den folgenden Seiten!  
See the following pages for more information!



### Lieferung & Zahlungsart

siehe unsere [Liefer- und Versandbedingungen](#)

### Zuschläge

- Mindermengenzuschlag
- Trockeneiszuschlag
- Gefahrgutzuschlag
- Expressversand

### SZABO-SCANDIC HandelsgmbH

Quellenstraße 110, A-1100 Wien

T. +43(0)1 489 3961-0

F. +43(0)1 489 3961-7

[mail@szabo-scandic.com](mailto:mail@szabo-scandic.com)

[www.szabo-scandic.com](http://www.szabo-scandic.com)

[linkedin.com/company/szaboscandic](https://www.linkedin.com/company/szaboscandic) 

# Anti-LGI1 Antibody [S283-7]

Mouse Anti-Mouse LGI1 Monoclonal IgG2a  
Catalog No. SMC-461



Discovery through partnership | Excellence through quality

## Overview

---

### Product Name

LGI1 Antibody

### Description

Mouse Anti-Mouse LGI1 Monoclonal IgG2a

### Species Reactivity

Human, Mouse, Rat

### Applications

WB, IHC, ICC/IF

### Antibody Dilution

WB (1:1000); optimal dilutions for assays should be determined by the user.

### Host Species

Mouse

### Immunogen Species

Mouse

### Immunogen

Fusion protein amino acids 37-113 (LRRNT domain and first LRR repeat) of mouse LGI1. Rat: 100% identity (77/77 amino acids identical). Human: 98% identity (76/77 amino acids identical). ~50% identity with LGI2, LGI3 and LGI4.

### Concentration

1 mg/ml

### Conjugates

Alkaline Phosphatase, APC, ATTO 390, ATTO 488, ATTO 565, ATTO 594, ATTO 633, ATTO 655, ATTO 680, ATTO 700, Biotin, FITC, HRP, PE/ATTO 594, PerCP, RPE, Streptavidin, Unconjugated

## Properties

---

### Storage Buffer

PBS pH 7.4, 50% glycerol, 0.1% sodium azide

### Storage Temperature

-20°C

### Shipping Temperature

Blue Ice or 4°C

### Purification

---

Protein G Purified

---

**Clonality**

Monoclonal

---

**Clone Number**

S283-7

---

**Isotype**

IgG2a

---

**Specificity**

Detects ~60kDa.

---

**Cite This Product**

Mouse Anti-Mouse LGI1 Monoclonal, Clone S283-7 (StressMarq Biosciences Inc., Victoria BC CANADA, Catalog # SMC-461)

---

**Certificate Of Analysis**

1 µg/ml of SMC-461 was sufficient for detection of LGI1 in 20 µg of rat brain lysate by colorimetric immunoblot analysis using Goat anti-mouse IgG:HRP as the secondary antibody.

---

**Biological Description**

---

**Alternative Names**

ADLTE Antibody, ADPAEF Antibody, ADPEAF Antibody, Epitempin 1 Antibody, EPT Antibody, ETL1 Antibody, IB1099 Antibody, leucine rich glioma inactivated 1 Antibody, OTTHUMP00000020121 Antibody, OTTHUMP00000020122 Antibody

---

**Research Areas**

Cancer, Cell Signaling, Epigenetics, Neurodegeneration, Neuroscience

---

**Cellular Localization**

Cell Junction, Endoplasmic Reticulum, Golgi apparatus

---

**Accession Number**

NP\_064674.1

---

**Gene ID**

56839

---

**Swiss Prot**

Q9JIA1.1

---

**Scientific Background**

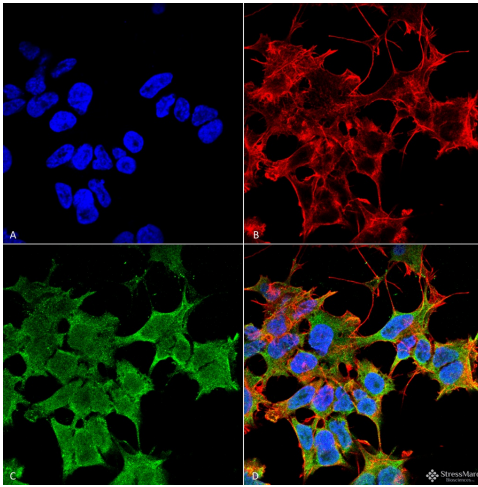
The leucine-rich, glioma inactivated gene 1 (LGI1) was first identified as a candidate tumor suppressor gene for glioma and may play a role in other cancers. LGI1 is a member of a family of highly related proteins containing leucine-rich repeats (LRRs) which are highly similar to other transmembrane signaling molecules and receptors. LGI1 serves as a ligand to ADAM22, a metalloprotease localized at the synapse. Mutations in LGI1 account for nearly half of autodominant lateral temporal epilepsy (ADTLE), an epileptic syndrome characterized by focal seizures with predominant auditory symptoms. Two isoforms of LGI1 are known to exist; this LGI1 antibody will recognize only the longer form.

---

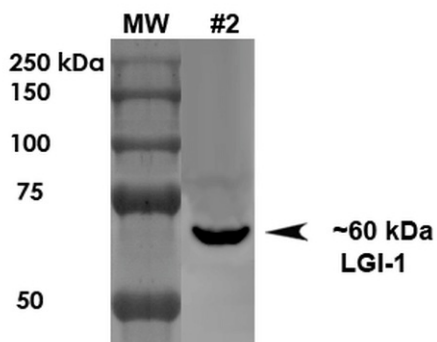
**References**

1. Chernova O.B., Somerville R.P. and Cowell J.K. (1998) *Oncogene*. 17:2873-81.
2. Fialka F., et al. (2008) *Oral Oncol.*
3. Gu W., et al. (2005) *Mol. Biol. Evol.* 22:2209-16.
4. Fukata Y., et al. (2006) *Science*. 313:1792-5.

## Product Images



Immunocytochemistry/Immunofluorescence analysis using Mouse Anti-LGI1 Monoclonal Antibody, Clone S283-7 (SMC-461). Tissue: Neuroblastoma cell line SK-N-BE. Species: Human. Fixation: 4% Formaldehyde for 15 min at RT. Primary Antibody: Mouse Anti-LGI1 Monoclonal Antibody (SMC-461) at 1:100 for 60 min at RT. Secondary Antibody: Goat Anti-Mouse ATTO 488 at 1:100 for 60 min at RT. Counterstain: Phalloidin Texas Red F-Actin stain; DAPI (blue) nuclear stain at 1:1000, 1:5000 for 60min RT, 5min RT. Localization: Cell Junction, Golgi Apparatus, Endoplasmic Reticulum. Magnification: 60X. (A) DAPI (blue) nuclear stain (B) Phalloidin Texas Red F-Actin stain (C) LGI1 Antibody (D) Composite.



Western Blot analysis of Rat Brain Membrane showing detection of ~60 kDa LGI1 protein using Mouse Anti-LGI1 Monoclonal Antibody, Clone S283-7 (SMC-461). Load: 10  $\mu$ g. Primary Antibody: Mouse Anti-LGI1 Monoclonal Antibody (SMC-461) at 1:1000 for 1 hour at RT. Secondary Antibody: Goat Anti-Mouse HRP at 1:200 for 1 hour at RT. Predicted/Observed Size: ~60 kDa.

## Product Citations (0)

Currently there are no citations for this product.

## Reviews

There are no reviews yet.