



SZABO SCANDIC

Part of Europa Biosite

Produktinformation



Forschungsprodukte & Biochemikalien



Zellkultur & Verbrauchsmaterial



Diagnostik & molekulare Diagnostik



Laborgeräte & Service

Weitere Information auf den folgenden Seiten!
See the following pages for more information!



Lieferung & Zahlungsart

siehe unsere [Liefer- und Versandbedingungen](#)

Zuschläge

- Mindermengenzuschlag
- Trockeneiszuschlag
- Gefahrgutzuschlag
- Expressversand

SZABO-SCANDIC HandelsgmbH

Quellenstraße 110, A-1100 Wien

T. +43(0)1 489 3961-0

F. +43(0)1 489 3961-7

mail@szabo-scandic.com

www.szabo-scandic.com

[linkedin.com/company/szaboscandic](https://www.linkedin.com/company/szaboscandic) 

Anti-Beta 4 Spectrin Antibody [S393-2]

Mouse Anti-Human beta 4 Spectrin Monoclonal IgG1
Catalog No. SMC-484



Discovery through partnership | Excellence through quality

Overview

Product Name

beta 4 Spectrin Antibody

Description

Mouse Anti-Human beta 4 Spectrin Monoclonal IgG1

Species Reactivity

Human, Mouse, Rat

Applications

WB, IHC, ICC/IF

Antibody Dilution

WB (1:1000); optimal dilutions for assays should be determined by the user.

Host Species

Mouse

Immunogen Species

Human

Immunogen

Fusion protein amino acids 1621-1832 (C-terminal repeats 14 to 15) of human Beta4-spectrin

Concentration

1 mg/ml

Conjugates

Alkaline Phosphatase, APC, ATTO 390, ATTO 488, ATTO 565, ATTO 594, ATTO 633, ATTO 655, ATTO 680, ATTO 700, Biotin, FITC, HRP, PE/ATTO 594, PerCP, RPE, Streptavidin, Unconjugated

Properties

Storage Buffer

PBS pH7.4, 50% glycerol, 0.1% sodium azide

Storage Temperature

-20°C

Shipping Temperature

Blue Ice or 4°C

Purification

Protein G Purified

Clonality

Monoclonal

Clone Number

S393-2

Isotype

IgG1

Specificity

Detects ~>200kDa. Does not cross react with other Beta-spectrins

Cite This Product

Mouse Anti-Human beta 4 Spectrin Monoclonal, Clone S393-2 (StressMarq Biosciences Inc., Victoria BC CANADA, Catalog # SMC-484)

Certificate Of Analysis

A 1:100 dilution of SMC-484 was sufficient for detection of Beta 4 Spectrin in 20 µg of mouse brain lysate by ECL immunoblot analysis using Goat anti-mouse IgG:HRP as the secondary antibody.

Biological Description

Alternative Names

BetaIV-spectrin sigma1 Antibody, Non-erythrocytic spectrin beta chain 4 Antibody, Non-erythroidspectrin beta chain 3 Antibody, SPTBN4 Antibody, SPTBN3 Antibody, Spnb4 Antibody, KIAA1642 Antibody, EMBL BAB83243.1 Antibody, Ensembl ENSRNOP00000028393 Antibody

Research Areas

Cell Signaling, Neuroscience, Scaffolds

Cellular Localization

Cytoplasm, Cell Cortex, Cytoskeleton

Accession Number

NP_066022.2

Gene ID

57731

Swiss Prot

Q9H254

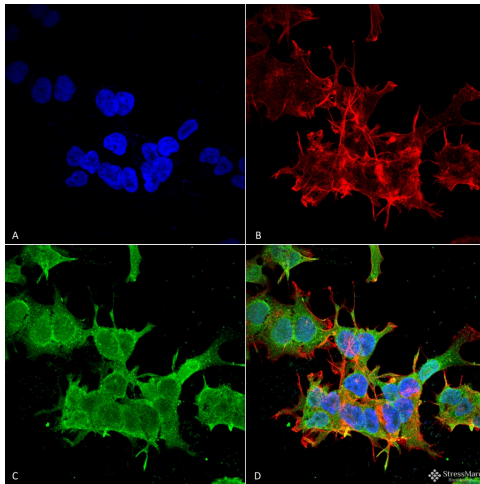
Scientific Background

Spectrin is the major constituent of the cytoskeletal network underlying the erythrocyte plasma membrane and determines cell shape, arrangement of transmembrane proteins and organization of organelles. It is expressed at very low levels in many tissues, with the strongest expression in the cerebellum, spinal cord, stomach, pituitary gland, liver, pancreas, salivary gland, kidney, bladder and heart (1). Spectrin beta 4 is a non-erythrocyte member, and is expressed in the brain and pancreatic islets and localized to the nuclear matrix, cytoplasmic vesicles and PML nuclear bodies. Beta4 spectrins are also essential for membrane stability and the molecular organization of the nodes of Ranvier (2).

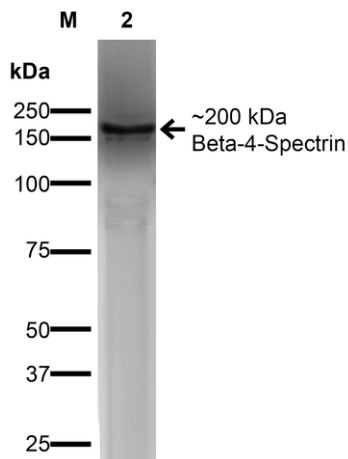
References

1. Genes and mapped phenotypes. (n.d.). Retrieved March 12, 2015, from <http://www.ncbi.nlm.nih.gov/gene/57731>
2. Yang Y., Lacas-Gervais S., Morest D.K., Solimena M., and Rasband M.N. (2004) J Neurosci. 24(33): 7230-7240.

Product Images



Immunocytochemistry/Immunofluorescence analysis using Mouse Anti-beta 4 Spectrin Monoclonal Antibody, Clone S393-2 (SMC-484). Tissue: Neuroblastoma cell line SK-N-BE. Species: Human. Fixation: 4% Formaldehyde for 15 min at RT. Primary Antibody: Mouse Anti-beta 4 Spectrin Monoclonal Antibody (SMC-484) at 1:100 for 60 min at RT. Secondary Antibody: Goat Anti-Mouse ATTO 488 at 1:100 for 60 min at RT. Counterstain: Phalloidin Texas Red F-Actin stain; DAPI (blue) nuclear stain at 1:1000; 1:5000 for 60 min RT, 5 min RT. Localization: Cytoplasm. Magnification: 60X. (A) DAPI (blue) nuclear stain (B) Phalloidin Texas Red F-Actin stain (C) beta 4 Spectrin Antibody (D) Composite.



Western Blot analysis of COS-Beta-4-Spectrin-His showing detection of ~ 200 kDa Beta-4-Spectrin protein using Mouse Anti-Beta-4-Spectrin Monoclonal Antibody, Clone S393-2 (SMC-484). Lane 1: MW Ladder. Lane 2: COS-Beta-4-Spectrin-His. Load: 15 µg protein. Block: 2% GE Healthcare Blocker for 1 hour at RT. Primary Antibody: Mouse Anti-Beta-4-Spectrin Monoclonal Antibody (SMC-484) at 1:1000 for 16 hours at 4°C. Secondary Antibody: Goat Anti-Mouse IgG: HRP at 1:200 for 1 hour at RT. Color Development: ECL solution for 6 min at RT. Predicted/Observed Size: ~ 200 kDa.

Product Citations (0)

Currently there are no citations for this product.

Reviews

There are no reviews yet.