



# SZABO SCANDIC

Part of Europa Biosite

## Produktinformation



Forschungsprodukte & Biochemikalien



Zellkultur & Verbrauchsmaterial



Diagnostik & molekulare Diagnostik



Laborgeräte & Service

Weitere Information auf den folgenden Seiten!  
See the following pages for more information!



### Lieferung & Zahlungsart

siehe unsere [Liefer- und Versandbedingungen](#)

### Zuschläge

- Mindermengenzuschlag
- Trockeneiszuschlag
- Gefahrgutzuschlag
- Expressversand

### SZABO-SCANDIC HandelsgmbH

Quellenstraße 110, A-1100 Wien

T. +43(0)1 489 3961-0

F. +43(0)1 489 3961-7

[mail@szabo-scandic.com](mailto:mail@szabo-scandic.com)

[www.szabo-scandic.com](http://www.szabo-scandic.com)

[linkedin.com/company/szaboscandic](https://www.linkedin.com/company/szaboscandic) 

# Anti-Nav Beta3 Antibody [S396-29]

Mouse Anti-Rat Nav beta3 Monoclonal IgG2B  
Catalog No. SMC-490



Discovery through partnership | Excellence through quality

## Overview

---

### Product Name

Nav beta3 Antibody

### Description

Mouse Anti-Rat Nav beta3 Monoclonal IgG2B

### Species Reactivity

Human, Mouse, Rat

### Applications

WB, ICC/IF

### Antibody Dilution

WB (1:1000), ICC/IF (1:100); optimal dilutions for assays should be determined by the user.

### Host Species

Mouse

### Immunogen Species

Rat

### Immunogen

Fusion protein amino acids 1-215 (full-length) of rat NavBeta3

### Concentration

1 mg/ml

### Conjugates

Alkaline Phosphatase, APC, ATTO 390, ATTO 488, ATTO 565, ATTO 594, ATTO 633, ATTO 655, ATTO 680, ATTO 700, Biotin, FITC, HRP, PE/ATTO 594, PerCP, RPE, Streptavidin, Unconjugated

## Properties

---

### Storage Buffer

PBS pH7.4, 50% glycerol, 0.1% sodium azide

### Storage Temperature

-20°C

### Shipping Temperature

Blue Ice or 4°C

### Purification

---

Protein G Purified

---

**Clonality**

---

Monoclonal

---

**Clone Number**

---

S396-29

---

**Isotype**

---

IgG2b

---

**Specificity**

---

Detects ~40kDa. Does not cross-react with NavBeta1, Navbeta2, or Navbeta4.

---

**Cite This Product**

---

Mouse Anti-Rat Navbeta3 Monoclonal, Clone S396-29 (StressMarq Biosciences Inc., Victoria BC CANADA, Catalog # SMC-490)

---

**Certificate Of Analysis**

---

A 1:100 dilution of SMC-490 was sufficient for detection of NavBeta3 in 20 µg of mouse brain lysate by ECL immunoblot analysis using Goat anti-mouse IgG:HRP as the secondary antibody.

---

**Biological Description**

---

**Alternative Names**

---

Sodium channel subunit beta-3 Antibody, Scn3b Antibody, KIAA1158 Antibody

---

**Research Areas**

---

Ion Channels, Neuroscience, Sodium Channels, Voltage-Gated Sodium Channels

---

**Cellular Localization**

---

Membrane

---

**Accession Number**

---

NP\_620797.1

---

**Gene ID**

---

245956

---

**Swiss Prot**

---

Q9JK00

---

**Scientific Background**

---

Nav Beta 3 (SCN3B) belongs to the voltage-gated sodium channel group, and modulates channel gating kinetics. It inactivates the sodium channel opening more slowly than its Beta1 subunit. It is also unique in causing persistent sodium currents which are thought to amplify summation of synaptic inputs which is likely to increase the excitability of specific neurons to their individual inputs (2). Its association with neurofascin may target the sodium channels to the nodes of Ranvier of developing axons and retain these channels at the nodes in mature myelinated axons (1, 2). Defects in SCN3B are the cause of Brugada syndrome (3).

---

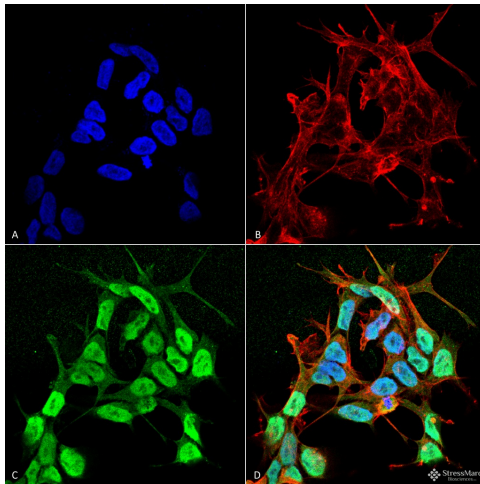
**References**

---

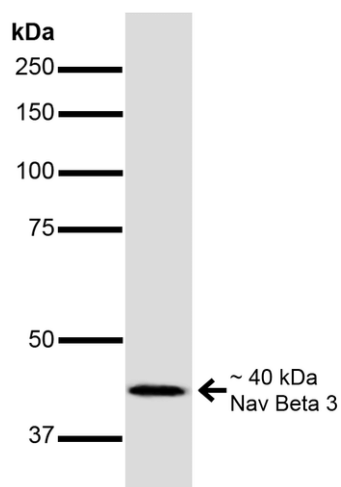
1. Genes and mapped phenotypes. (n.d.). Retrieved March 26, 2015, from <http://www.ncbi.nlm.nih.gov/gene/?term=Q9JK00>
  2. Qu Y., et al. (2001) Mol Cell Neurosci. 18(5): 570-580.
  3. Ishikawa T., et al. (2013) Circ J. 77(4): 956-967.
-

## Product Images

---



Immunocytochemistry/Immunofluorescence analysis using Mouse Anti-Nav beta 3 Monoclonal Antibody, Clone S396-29 (SMC-490). Tissue: Neuroblastoma cell line SK-N-BE. Species: Human. Fixation: 4% Formaldehyde for 15 min at RT. Primary Antibody: Mouse Anti-Nav beta 3 Monoclonal Antibody (SMC-490) at 1:100 for 60 min at RT. Secondary Antibody: Goat Anti-Mouse ATTO 488 at 1:100 for 60 min at RT. Counterstain: Phalloidin Texas Red F-Actin stain; DAPI (blue) nuclear stain at 1:1000, 1:5000 for 60min RT, 5min RT. Localization: Cell Membrane, Nucleus. Magnification: 60X. (A) DAPI (blue) nuclear stain (B) Phalloidin Texas Red F-Actin stain (C) Nav beta 3 Antibody (D) Composite.



Western Blot analysis of Mouse Brain showing detection of ~40 kDa Nav Beta 3 protein using Mouse Anti-Nav Beta 3 Monoclonal Antibody, Clone S396-29 (SMC-490). Lane 1: MW Ladder. Lane 2: Mouse Brain. Load: 20  $\mu$ g. Primary Antibody: Mouse Anti-Nav Beta 3 Monoclonal Antibody (SMC-490) at 1:1000 for 16 hours at 4°C. Secondary Antibody: Goat Anti-Mouse IgG: HRP at 1:200 for 1 hour at RT. Predicted/Observed Size: ~40 kDa.

## Product Citations (0)

---

Currently there are no citations for this product.

## Reviews

---

There are no reviews yet.