



SZABO SCANDIC

Part of Europa Biosite

Produktinformation



Forschungsprodukte & Biochemikalien



Zellkultur & Verbrauchsmaterial



Diagnostik & molekulare Diagnostik



Laborgeräte & Service

Weitere Information auf den folgenden Seiten!
See the following pages for more information!



Lieferung & Zahlungsart

siehe unsere [Liefer- und Versandbedingungen](#)

Zuschläge

- Mindermengenzuschlag
- Trockeneiszuschlag
- Gefahrgutzuschlag
- Expressversand

SZABO-SCANDIC HandelsgmbH

Quellenstraße 110, A-1100 Wien

T. +43(0)1 489 3961-0

F. +43(0)1 489 3961-7

mail@szabo-scandic.com

www.szabo-scandic.com

[linkedin.com/company/szaboscandic](https://www.linkedin.com/company/szaboscandic) 

Anti-Kir6.1 Antibody [S366-60]

Mouse Anti-Rat Kir6.1 Monoclonal IgG2A
Catalog No. SMC-491



Discovery through partnership | Excellence through quality

Overview

Product Name

Kir6.1 Antibody

Description

Mouse Anti-Rat Kir6.1 Monoclonal IgG2A

Species Reactivity

Human, Mouse, Rat

Applications

WB, IHC, ICC/IF

Antibody Dilution

WB (1:1000), ICC/IF (1:100); optimal dilutions for assays should be determined by the user.

Host Species

Mouse

Immunogen Species

Rat

Immunogen

Fusion protein amino acids 306-424 (Cytoplasmic C-terminus) of rat Kir6.1

Concentration

1 mg/ml

Conjugates

Alkaline Phosphatase, APC, ATTO 390, ATTO 488, ATTO 565, ATTO 594, ATTO 633, ATTO 655, ATTO 680, ATTO 700, Biotin, FITC, HRP, PE/ATTO 594, PerCP, RPE, Streptavidin, Unconjugated

Properties

Storage Buffer

PBS pH7.4, 50% glycerol, 0.1% sodium azide

Storage Temperature

-20°C

Shipping Temperature

Blue Ice or 4°C

Purification

Protein G Purified

Clonality

Monoclonal

Clone Number

S366-60

Isotype

IgG2a

Specificity

Detects ~45kDa.

Cite This Product

Mouse Anti-Rat Kir6.1 Monoclonal, Clone S366-60 (StressMarq Biosciences Inc., Victoria BC CANADA, Catalog # SMC-491)

Certificate Of Analysis

A 1:100 dilution of SMC-491 was sufficient for detection of Kir6.1 in 20 µg of mouse brain lysate by ECL immunoblot analysis using Goat anti-mouse IgG:HRP as the secondary antibody.

Biological Description

Alternative Names

ATP-sensitive inward rectifier potassium channel 8 Antibody, Potassium channel inwardly rectifying subfamily J member 8 Antibody, uKATP-1 Antibody, Kcnj8 Antibody

Research Areas

Cancer, Inward-Rectifying Potassium Channels, Ion Channels, Neuroscience, Potassium Channels

Cellular Localization

Membrane

Accession Number

NP_058795.3

Gene ID

25472

Swiss Prot

Q63664

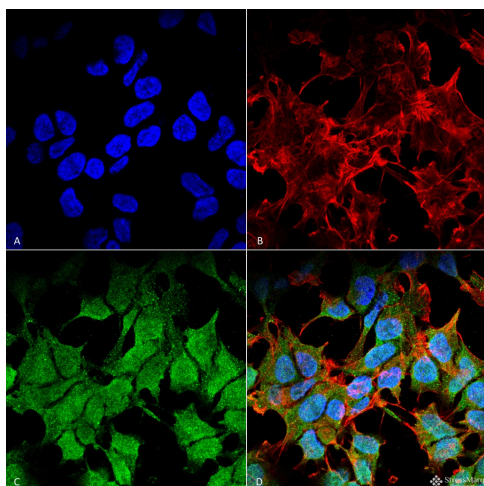
Scientific Background

Several different potassium channels are known to be involved with electrical signaling in the nervous system. One class is activated by depolarization whereas a second class is not. The latter are referred to as inwardly rectifying K⁺ channels, and they have a greater tendency to allow potassium to flow into the cell rather than out of it. This asymmetry in potassium ion conductance plays a key role in the excitability of muscle cells and neurons. The protein encoded by this gene is an integral membrane protein and member of the inward rectifier potassium channel family (1-3). This is predominantly detected in fetal and adult hearts, and defects can be associated with J-wave syndromes, a group of heart disorders characterized by early repolarization events (4).

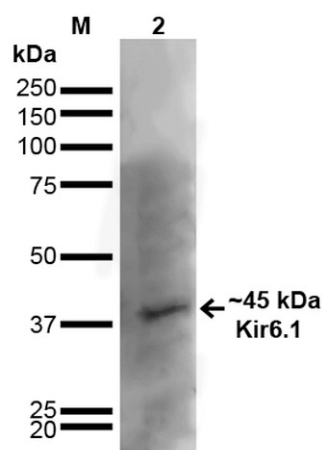
References

1. Zobel C., et al. (2003) J Physiol. 550: 365-372.
2. Panama B.K., McLerie M., and Lopatin A.N. (2007) Am J Physiol Heart Circ Physiol. 293: H3558-H3567.
3. Munoz V., et al. (2007) Heart Rhythm. 4(4): 487-496.
4. Aguilar-Bryan L., et al. (1998) Physiol Rev. 78(1): 227-245.

Product Images



Immunocytochemistry/Immunofluorescence analysis using Mouse Anti-Kir6.1 Monoclonal Antibody, Clone S366-60 (SMC-491). Tissue: Neuroblastoma cell line SK-N-BE. Species: Human. Fixation: 4% Formaldehyde for 15 min at RT. Primary Antibody: Mouse Anti-Kir6.1 Monoclonal Antibody (SMC-491) at 1:100 for 60 min at RT. Secondary Antibody: Goat Anti-Mouse ATTO 488 at 1:100 for 60 min at RT. Counterstain: Phalloidin Texas Red F-Actin stain; DAPI (blue) nuclear stain at 1:1000, 1:5000 for 60min RT, 5min RT. Localization: Membrane. Magnification: 60X. (A) DAPI (blue) nuclear stain (B) Phalloidin Texas Red F-Actin stain (C) Kir6.1 Antibody (D) Composite.



Western Blot analysis of Rat Brain showing detection of ~45 kDa Kir6.1 protein using Mouse Anti-Kir6.1 Monoclonal Antibody, Clone S366-60 (SMC-491). Lane 1: MW Ladder. Lane 2: Rat Brain. Load: 20 μ g. Block: 2% GE Healthcare Blocker for 1 hour at RT. Primary Antibody: Mouse Anti-Kir6.1 Monoclonal Antibody (SMC-491) at 1:1000 for 16 hours at 4°C. Secondary Antibody: Goat Anti-Mouse IgG: HRP at 1:200 for 1 hour at RT. Color Development: ECL solution for 6 min at RT. Predicted/Observed Size: ~45 kDa. Other Band(s): ~100 kDa.

Product Citations (0)

Currently there are no citations for this product.

Reviews

There are no reviews yet.