



SZABO SCANDIC

Part of Europa Biosite

Produktinformation



Forschungsprodukte & Biochemikalien



Zellkultur & Verbrauchsmaterial



Diagnostik & molekulare Diagnostik



Laborgeräte & Service

Weitere Information auf den folgenden Seiten!
See the following pages for more information!



Lieferung & Zahlungsart

siehe unsere [Liefer- und Versandbedingungen](#)

Zuschläge

- Mindermengenzuschlag
- Trockeneiszuschlag
- Gefahrgutzuschlag
- Expressversand

SZABO-SCANDIC HandelsgmbH

Quellenstraße 110, A-1100 Wien

T. +43(0)1 489 3961-0

F. +43(0)1 489 3961-7

mail@szabo-scandic.com

www.szabo-scandic.com

[linkedin.com/company/szaboscandic](https://www.linkedin.com/company/szaboscandic) 

MOLECULAR SIGNATURE®
**Anti-Sulfotyrosine
Antibody [12B11
(Formerly sold as
7C5)]**



Discovery through Partnership | Excellence through Quality

Mouse Anti-Sulfotyrosine Monoclonal IgG1
Catalog No. SMC-522

Product Name

Sulfotyrosine Antibody

Description

Mouse Anti-Sulfotyrosine Monoclonal IgG1

Species Reactivity

Species Independent

Applications

WB, ICC/IF, IHC, ELISA

Antibody Dilution

WB (1:1000); ICC/IF (1:50); ELISA (1:1000); IHC (1:25); optimal dilutions for assays should be determined by the user.

Host Species

Mouse

Immunogen

Synthetic Sulfotyrosine conjugated to Keyhole Limpet Hemocyanin (KLH).

Concentration

1 mg/ml

Conjugates

APC, ATTO 390, ATTO 488, ATTO 594, Biotin, FITC, HRP, PerCP, RPE, Unconjugated

Field Of Use

Not for use in humans. Not for use in diagnostics or therapeutics. For in vitro research use only.

Properties

Storage Buffer

PBS pH 7.4, 50% glycerol, 0.09% Sodium azide *Storage buffer may change when conjugated

Storage Temperature

-20°C, Conjugated antibodies should be stored according to the product label

Shipping Temperature

Blue Ice or 4°C

Purification

Protein G Purified

Clonality

Monoclonal

Clone Number

12B11 (Formerly sold as 7C5)

Isotype

IgG1

Specificity

Specific for sulfated tyrosine residues on various proteins. Does not detect free Sulfotyrosine. Does not cross-react with phosphotyrosine.

Cite This Product

StressMarq Biosciences Cat# SMC-522, RRID: AB_2703035

Certificate Of Analysis

A 1:1000 dilution of SMC-522 was sufficient for detection of Sulfotyrosine in 0.5 µg of Sulfotyrosine conjugated to BSA by ECL immunoblot analysis using Goat Anti-Mouse IgG:HRP as the secondary Antibody.

Biological Description

Alternative Names

Sulfotyrosine Antibody, Tyrosine sulfation Antibody, Sulfated Tyrosine Antibody, S-Tyrosine Antibody, sTYR Antibody, Sulphotyrosine Antibody, Tyrosine Sulphation Antibody, Sulphated Tyrosine Antibody

Research Areas

Cell Signaling, Post-translational Modifications, Sulfation

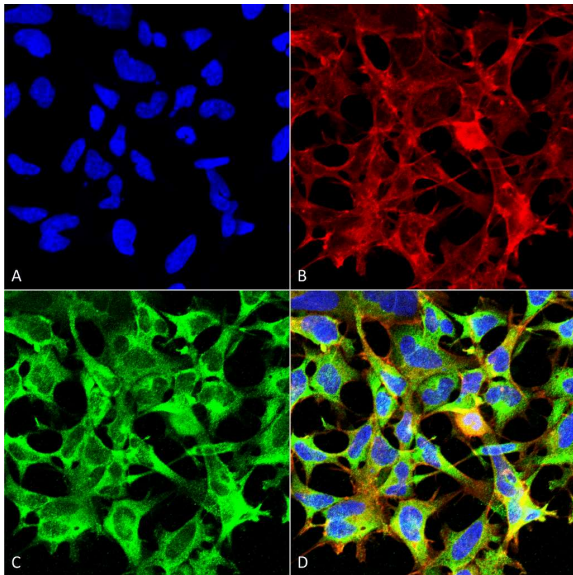
Scientific Background

Tyrosine sulfation is a common post-translational protein modification catalyzed by tyrosylprotein sulfotransferase (TPST) (1). Sulfotyrosines mediate interactions between hirudin and thrombin, P-selectin glycoprotein ligand-1 and P-selectin, and von Willebrand factor and factor VIII. Tyrosine sulfation of certain receptors is required for several viruses and parasites to enter their hosts.

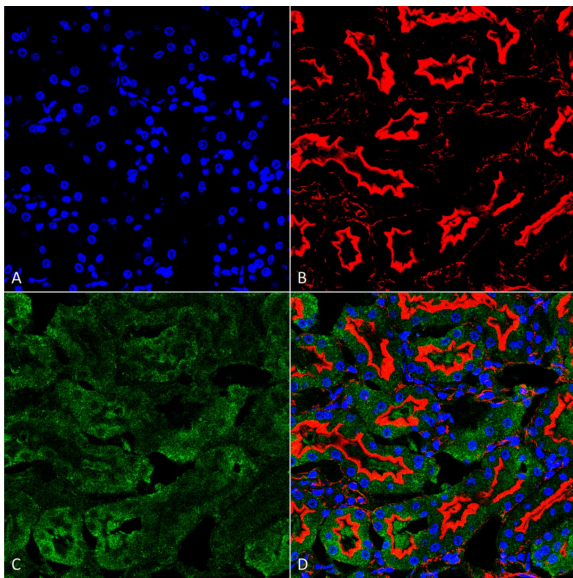
References

1. Lee, R.W., Huttner W.B. (1983). J Biol Chem. 258(18):11326-34.

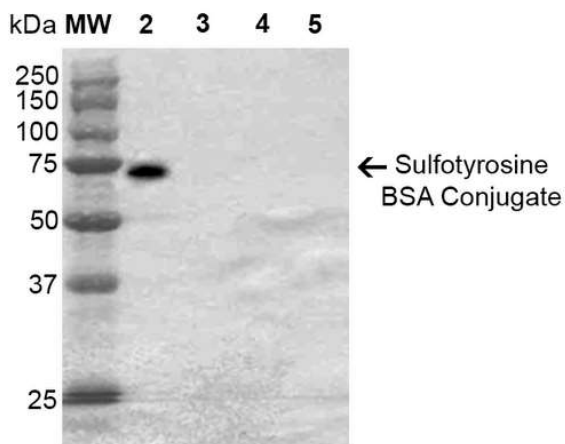
Product Images



Immunocytochemistry/Immunofluorescence analysis using Mouse Anti-Sulfotyrosine Monoclonal Antibody, Clone 12B11 (SMC-522). Tissue: Embryonic kidney epithelial cell line (HEK293). Species: Human. Fixation: 5% Formaldehyde for 5 min. Primary Antibody: Mouse Anti-Sulfotyrosine Monoclonal Antibody (SMC-522) at 1:50 for 30-60 min at RT. Secondary Antibody: Goat Anti-Mouse Alexa Fluor 488 at 1:1500 for 30-60 min at RT. Counterstain: Phalloidin Alexa Fluor 633 F-Actin stain; DAPI (blue) nuclear stain at 1:250, 1:50000 for 30-60 min at RT. Localization: Cytoplasmic. Magnification: 20X (2X Zoom). (A) DAPI (blue) nuclear stain. (B) Phalloidin Alexa Fluor 633 F-Actin stain. (C) Sulfotyrosine Antibody. (D) Composite. Courtesy of: Dr. Robert Burke, University of Victoria.



Immunohistochemistry analysis using Mouse Anti-Sulfotyrosine Monoclonal Antibody, Clone 12B11 (SMC-522). Tissue: kidney. Species: Human. Fixation: Formalin fixed, paraffin embedded. Primary Antibody: Mouse Anti-Sulfotyrosine Monoclonal Antibody (SMC-522) at 1:25 for 1 hour at RT. Secondary Antibody: Goat Anti-Mouse IgG: Alexa Fluor 488. Counterstain: Actin-binding Phalloidin-Alexa Fluor 633; DAPI (blue) nuclear stain. Magnification: 63X. (A) DAPI (blue) nuclear stain. (B) Phalloidin Alexa Fluor 633 F-Actin stain. (C) Sulfotyrosine Antibody (D) Composite.



Western Blot analysis of Sulfotyrosine-BSA Conjugate showing detection of 67 kDa Sulfotyrosine protein using Mouse Anti-Sulfotyrosine Monoclonal Antibody, Clone 12B11 (SMC-522). Lane 1: Molecular Weight Ladder (MW). Lane 2: Sulfotyrosine-BSA. Lane 3: Tyrosine-BSA. Lane 4: Phosphotyrosine-BSA. Lane 5: BSA. Load: 2 μ g. Block: 5% Skim Milk in TBST. Primary Antibody: Mouse Anti-Sulfotyrosine Monoclonal Antibody (SMC-522) at 1:1000 for 2 hours at RT. Secondary Antibody: Goat Anti-Mouse IgG: HRP at 1:2000 for 60 min at RT. Color Development: ECL solution for 5 min in RT. Predicted/Observed Size: 67 kDa.

Product Citations

Reviews

There are no reviews yet.