



# SZABO SCANDIC

Part of Europa Biosite

## Produktinformation



Forschungsprodukte & Biochemikalien



Zellkultur & Verbrauchsmaterial



Diagnostik & molekulare Diagnostik



Laborgeräte & Service

Weitere Information auf den folgenden Seiten!  
See the following pages for more information!



### Lieferung & Zahlungsart

siehe unsere [Liefer- und Versandbedingungen](#)

### Zuschläge

- Mindermengenzuschlag
- Trockeneiszuschlag
- Gefahrgutzuschlag
- Expressversand

### SZABO-SCANDIC HandelsgmbH

Quellenstraße 110, A-1100 Wien

T. +43(0)1 489 3961-0

F. +43(0)1 489 3961-7

[mail@szabo-scandic.com](mailto:mail@szabo-scandic.com)

[www.szabo-scandic.com](http://www.szabo-scandic.com)

[linkedin.com/company/szaboscandic](https://www.linkedin.com/company/szaboscandic) 

# Anti-Tau Antibody (pThr217) [15B7]



Discovery through Partnership | Excellence through Quality

Mouse Anti-Human Tau (pThr217) Monoclonal  
IgG1 Kappa  
Catalog No. SMC-615

## Product Name

Tau Antibody (pThr217)

## Description

Mouse Anti-Human Tau (pThr217) Monoclonal IgG1 Kappa

## Species Reactivity

Human, Mouse, Rat

## Applications

WB, DB

## Antibody Dilution

WB (1:1000); optimal dilutions for assays should be determined by the user.

## Host Species

Mouse

## Immunogen Species

Human

## Immunogen

Synthetic peptide of Wild-type Human Tau (pThr217) AA 210-224: SRTPSLP-pT-PPTREPK

## Concentration

1mg/mL

## Conjugates

Alkaline Phosphatase, APC, ATTO 390, ATTO 488, ATTO 594, Biotin, FITC, HRP, PerCP, RPE, Unconjugated

## Field Of Use

Not for use in humans. Not for use in diagnostics or therapeutics. For in vitro research use only.

## Properties

---

### Storage Buffer

PBS pH 7.4, 50% glycerol, 0.09% Sodium azide \*Storage buffer may change when conjugated

---

### Storage Temperature

-20°C

---

### Shipping Temperature

Blue Ice or 4°C

---

### Purification

Protein G Purified

---

### Clonality

Monoclonal

---

### Clone Number

15B7

---

### Isotype

IgG1 Kappa

---

### Specificity

Detects phosphorylation on Thr217

---

### Cite This Product

Mouse Anti-Human Tau Antibody (pThr217) Monoclonal (StressMarq Biosciences, Victoria BC, Cat# SMC-615)

---

### Certificate Of Analysis

A 1:1000 dilution of SMC-615 was sufficient for detection of Tau in 10 µg of Human, Mouse, Rat Tau Peptide (pThr217) by DB analysis using Goat Anti-Mouse IgG:HRP as the secondary antibody.

---

## Biological Description

---

### Alternative Names

Microtubule associated protein tau, phospho tau

---

### Research Areas

---

Alzheimer's Disease, Axon Markers, Cell Markers, Cell Signaling, Cytoskeleton, Microtubules, MT Associated Proteins, Neurodegeneration, Neuron Markers, Neuroscience, Tangles & Tau

---

### **Cellular Localization**

---

Intracellular, Secreted

---

### **Accession Number**

---

NP\_058519.3

---

### **Gene ID**

---

4137

---

### **Swiss Prot**

---

P10636

---

### **Scientific Background**

---

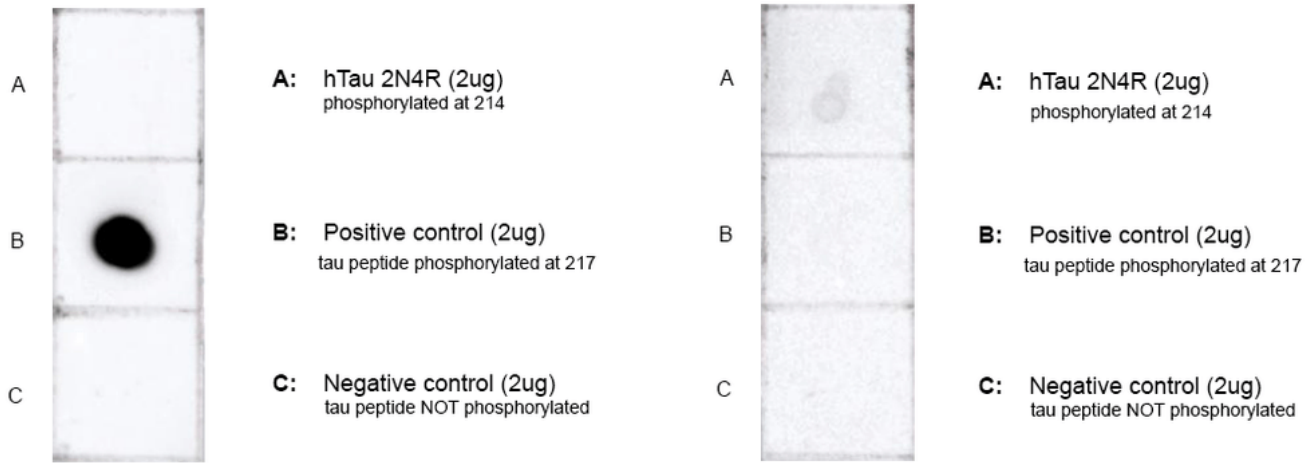
This gene encodes the microtubule-associated protein tau (MAPT) whose transcript undergoes complex, regulated alternative splicing, giving rise to several mRNA species. MAPT transcripts are differentially expressed in the nervous system, depending on stage of neuronal maturation and neuron type.

---

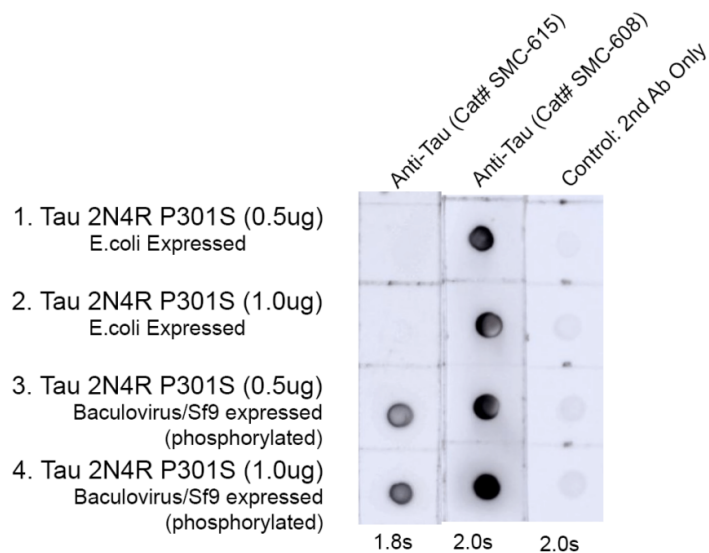
### **Product Images**

---

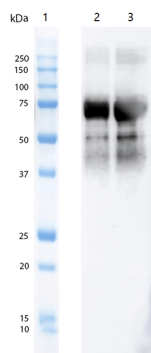
---



Dot Blot analysis of Tau Peptide (pThr217) showing detection of Tau protein using Mouse Anti-Tau Monoclonal Antibody, Clone 15B7 (SMC-615). Panel A: hTau 2N4R monomer (pSer214) (2 ug). Panel B: Tau peptide (pThr217) (2 ug). Panel C: Tau peptide (non phospho) (2 ug). Panels on the right are negative control with secondary antibody only. Load: 2ug. Block: 5% Skim Milk in 1X TBST. Primary Antibody: Mouse Anti-Tau Monoclonal Antibody (SMC-615) at 1:1000 for 1 hour at RT with shaking. Secondary Antibody: Goat anti-mouse IgG:HRP at 1:4000 for 1/2 hour at RT with shaking. Color Development: Chemiluminescent for HRP (Moss) for 1 min in ECL. Phospho peptide sequence: SRTPSLP-pT-PPTREPK. Non-phospho peptide sequence: SRTPSLPTPPTREPK. This sequence is the same for human, mouse, and rat.



Dot Blot analysis of Tau 2N4R P301S (phospho & non-phospho) showing detection of Tau protein using Mouse Anti-Tau Monoclonal Antibody, Clone 15B7 (SMC-615). Lane 1: hTau 2N4R P301S Monomer(0.5ug). Lane 2: hTau 2N4R P301S Monomer(1.0ug). Lane 3: Recombinant hTau-441 (2N4R) P301S Monomer, Baculovirus/Sf9 Expressed (phosphorylated)(0.5ug). Lane 4: Recombinant hTau-441 (2N4R) P301S Monomer, Baculovirus/Sf9 Expressed (phosphorylated)(1.0ug). Load: 0.5ug, 1.0ug. Block: 5% BSA in TBST. Primary Antibody: Mouse Anti-Tau Monoclonal Antibody (SMC-615) at 1:4 for Overnight, 4C, with shaking. Secondary Antibody: Goat anti-mouse IgG:HRP at 1:4000 for 1 hour at RT with shaking. Color Development: Chemiluminescent for HRP (Moss) for 5 min in RT. Dot Blot performed with supernatants.



Western Blot analysis of baculovirus-expressed human Tau 2N4R monomer showing detection of Tau protein phosphorylated at Thr217 using Mouse Anti-Tau Monoclonal Antibody, Clone 15B7 (SMC-615). Lane 1: Biorad All Blue Standards (3uL), Lane 2: baculovirus expressed hTau 2N4R monomer (2ug), lane 3: baculovirus expressed hTau 2N4R monomer (4ug). Block: 5% Skim Milk in TBST, 1/2 hr at RT with shaking. Primary Antibody: Mouse Anti-Tau Monoclonal Antibody (SMC-615) at 1:1000 for 1 hour at RT. Secondary Antibody: Goat anti-mouse IgG:HRP at 1:4000 for 1/2 hour at RT with shaking. Color Development: Chemiluminescent for HRP (Moss) for 1 min in RT. Species reactivity with Mouse & Rat. Baculovirus-expressed hTau 2N4R wildtype monomer purified in-house.

## Product Citations (0)

---

Currently there are no citations for this product.

## Reviews

---

There are no reviews yet.