



# SZABO SCANDIC

Part of Europa Biosite

## Produktinformation



Forschungsprodukte & Biochemikalien



Zellkultur & Verbrauchsmaterial



Diagnostik & molekulare Diagnostik



Laborgeräte & Service

Weitere Information auf den folgenden Seiten!  
See the following pages for more information!



### Lieferung & Zahlungsart

siehe unsere [Liefer- und Versandbedingungen](#)

### Zuschläge

- Mindermengenzuschlag
- Trockeneiszuschlag
- Gefahrgutzuschlag
- Expressversand

### SZABO-SCANDIC HandelsgmbH

Quellenstraße 110, A-1100 Wien

T. +43(0)1 489 3961-0

F. +43(0)1 489 3961-7

[mail@szabo-scandic.com](mailto:mail@szabo-scandic.com)

[www.szabo-scandic.com](http://www.szabo-scandic.com)

[linkedin.com/company/szaboscandic](https://www.linkedin.com/company/szaboscandic) 

# Anti-PPM1H Antibody [10D2]



Discovery through Partnership | Excellence through Quality

Human Anti-Human PPM1H Monoclonal IgG1  
Catalog No. SMC-616

## Product Name

PPM1H Antibody

## Description

Human Anti-Human PPM1H Monoclonal IgG1

## Species Reactivity

Human, Mouse, Rat

## Applications

WB, ICC/IF

## Antibody Dilution

WB (1:1000), ICC/IF (1:500); optimal dilutions for assays should be determined by the user.

## Host Species

Mouse

## Immunogen Species

Human

## Immunogen

Recombinant Human PPM1H Protein

## Concentration

1mg/mL

## Conjugates

Alkaline Phosphatase, APC, ATTO 390, ATTO 488, ATTO 594, Biotin, FITC, HRP, PerCP, RPE, Unconjugated

## Field Of Use

Not for use in humans. Not for use in diagnostics or therapeutics. For in vitro research use only.

## Properties

---

### Storage Buffer

PBS pH 7.4, 50% glycerol, 0.09% sodium azide \*Storage buffer may change when conjugated

---

### Storage Temperature

-20°C

---

### Shipping Temperature

Blue Ice or 4°C

---

### Purification

Protein G Purified

---

### Clonality

Monoclonal

---

### Clone Number

10D2

---

### Isotype

IgG1

---

### Specificity

Detects ~55kDa.

---

### Cite This Product

Mouse Anti-Human PPM1H Monoclonal (StressMarq Biosciences, Victoria BC, Cat# SMC-616)

---

### Certificate Of Analysis

A 1:1000 dilution of SMC-616 was sufficient for detection of PPM1H in 10 µg of Hu, Ms, Rt Kidney Cells (HEK293), Alveolar Basal Epithelial cells (A549) by ECL immunoblot analysis using Goat Anti-Mouse IgG:HRP as the secondary antibody.

---

## Biological Description

---

### Alternative Names

Protein phosphatase Mg<sup>2+</sup>/Mn<sup>2+</sup> dependent 1H Antibody | NERPP2C | Protein phosphatase 1H Antibody

---

### Research Areas

Cancer, Cell Signaling, Neurodegeneration, Neuroscience, Oncoproteins, Parkinson's Disease, Protein Phosphorylation, Serine / Threonine Kinases, Signal Transducers, Tumor Biomarkers

## Cellular Localization

Intracellular

## Accession Number

NP\_065751.1

## Gene ID

57460

## Swiss Prot

Q9ULR3

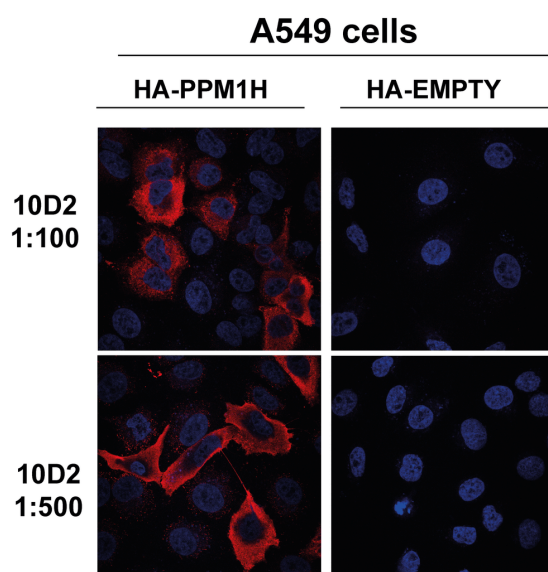
## Scientific Background

PPM1H is an independent prognostic biomarker of non-small cell lung cancer (1). PPM1H acts as a key modulator of LRRK2 signaling by controlling dephosphorylation of Rab proteins (2). PPM1H is also suggested to be a gatekeeper to prevent excessive bone morphogenetic protein (BMP) signalling through dephosphorylation (3).

## References

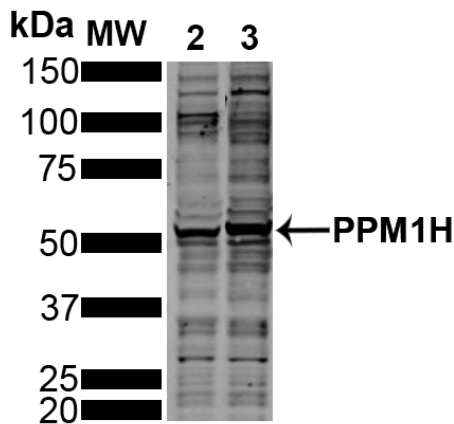
1. Zhang W.Q., et al. (2021) Neoplasma. 68(5): 917-923.
2. Berndsen K., et al. (2019) 8:e50416.
3. Shen T., et al. (2014) Cell Res. 24(6): 727-741.

## Product Images



Immunocytochemistry/Immunofluorescence analysis using Mouse Anti-PPM1H Monoclonal Antibody, Clone 10D2 (SMC-616). Tissue: Alveolar Basal Epithelial cells (A549). Species: Hu, Ms, Rt. Primary Antibody: Mouse Anti-PPM1H Monoclonal Antibody (SMC-616) at 1:1000 for 1 hour at RT. Secondary Antibody: Alexa

Fluor 594 Donkey anti mouse secondary diluted in 0.2% BSA + 0.02% sodium azide in PBS at 1:1000 for 1 hour at RT. Counterstain: Cells mounted and co-stained with DAPI using ProLong Gold antifade reagent with DAPI (Invitrogen). Localization: Intracellular, Nucleoplasm. Magnification: 63x. Courtesy of: Dario Alessi Lab, University of Dundee.



**2 - A549**

**3 - HEK293**

Western Blot analysis of Hu, Ms, Rt Kidney Cells (HEK293), Alveolar Basal Epithelial cells (A549) showing detection of ~55 PPM1H protein using Mouse Anti-PPM1H Monoclonal Antibody, Clone 10D2 (SMC-616). Lane 1: MW Ladder. Lane 2: A549. Lane 3: HEK293.. Load: 30 ug. Block: 5% Skim Milk in TBST, 1h, RT. Primary Antibody: Mouse Anti-PPM1H Monoclonal Antibody (SMC-616) at 1:1000 for Overnight, 4C. Secondary Antibody: Donkey anti-mouse 800 (LiCOR) at 1:25000 for 1 hour at RT. Color Development: Odyssey CLx Western Blot imaging . Predicted/Observed Size: ~55. Other Band(s): ~30, ~100. Courtesy of: Dario Alessi Lab, University of Dundee.

## Product Citations (0)

---

Currently there are no citations for this product.

## Reviews

---

There are no reviews yet.