



SZABO SCANDIC

Part of Europa Biosite

Produktinformation



Forschungsprodukte & Biochemikalien



Zellkultur & Verbrauchsmaterial



Diagnostik & molekulare Diagnostik



Laborgeräte & Service

Weitere Information auf den folgenden Seiten!
See the following pages for more information!



Lieferung & Zahlungsart

siehe unsere [Liefer- und Versandbedingungen](#)

Zuschläge

- Mindermengenzuschlag
- Trockeneiszuschlag
- Gefahrgutzuschlag
- Expressversand

SZABO-SCANDIC HandelsgmbH

Quellenstraße 110, A-1100 Wien

T. +43(0)1 489 3961-0

F. +43(0)1 489 3961-7

mail@szabo-scandic.com

www.szabo-scandic.com

[linkedin.com/company/szaboscandic](https://www.linkedin.com/company/szaboscandic) 

Anti-CDC37 Antibody

Rabbit Anti-Human CDC37 Polyclonal
Catalog No. SPC-142



Discovery through partnership | Excellence through quality

Overview

Product Name

CDC37 Antibody

Description

Rabbit Anti-Human CDC37 Polyclonal

Species Reactivity

Human

Applications

WB, ICC/IF

Antibody Dilution

WB (1:2000), ICC/IF (1:200); optimal dilutions for assays should be determined by the user.

Host Species

Rabbit

Immunogen Species

Human

Immunogen

Native human Cdc37, full length

Concentration

1.68 mg/ml

Conjugates

Alkaline Phosphatase, APC, ATTO 390, ATTO 488, ATTO 565, ATTO 594, ATTO 633, ATTO 655, ATTO 680, ATTO 700, Biotin, FITC, HRP, PE/ATTO 594, PerCP, RPE, Streptavidin, Unconjugated

Properties

Storage Buffer

PBS pH 7.4, 50% glycerol, 0.09% sodium azide

Storage Temperature

-20°C

Shipping Temperature

Blue Ice or 4°C

Purification

Protein A purified

Clonality

Polyclonal

Specificity

Detects ~44.5kDa.

Cite This Product

Rabbit Anti-Human CDC37 Polyclonal (StressMarq Biosciences Inc., Victoria BC CANADA, Catalog # SPC-142)

Certificate Of Analysis

A 1:2000 dilution of SPC-142 was sufficient for detection of cdc37 in 20 µg of HeLa cell lysate by ECL immunoblot analysis.

Biological Description

Research Areas

Cancer, Heat Shock, Cell Signaling, Epigenetics

Cellular Localization

Cytoplasm

Accession Number

NP_008996.1

Gene ID

11140

Swiss Prot

Q16543

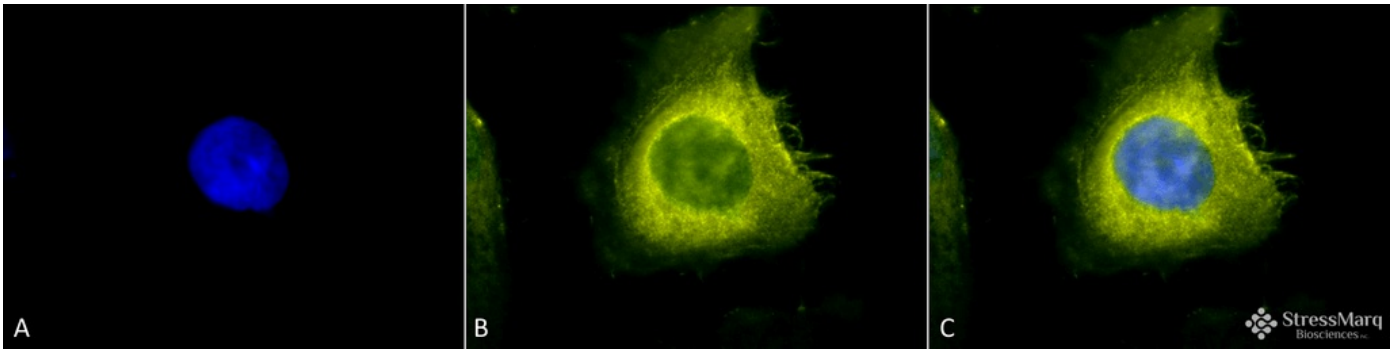
Scientific Background

HSP90 co-chaperone Cdc37 is a protein that is encoded by the CDC37 gene. It has been found to form complexes with HSP90 and a variety of protein kinases including CDK4, CDK6, SRC, RAF1, MOK and eIF-2 alpha kinases. It is thought to play a critical role in directing HSP90 to its target kinases (1, 2). CDC37 is necessary for maintaining prostate tumor cell growth and represents a novel target in the exploration for multi-targeted therapies (3, 4).

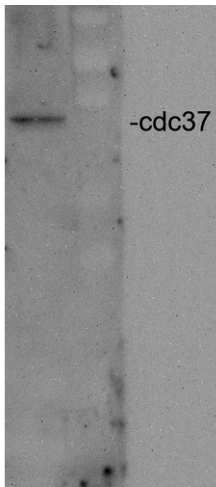
References

1. Dai K, Kobayashi R., Beach D. (1996) J Biol Chem. 271(36): 22030-22034.
 2. Stepanova L, Leng X., Parker S.B., Harper J.W. (1996) Genes Dev. 10(12): 1491-1502.
 3. Kimura Y., et al. (1997) Genes Dev. 11(14): 1775-1185.
 4. Gray P.J., et al. (2008) Nat Rev Cancer. 8(7): 491-495.
-

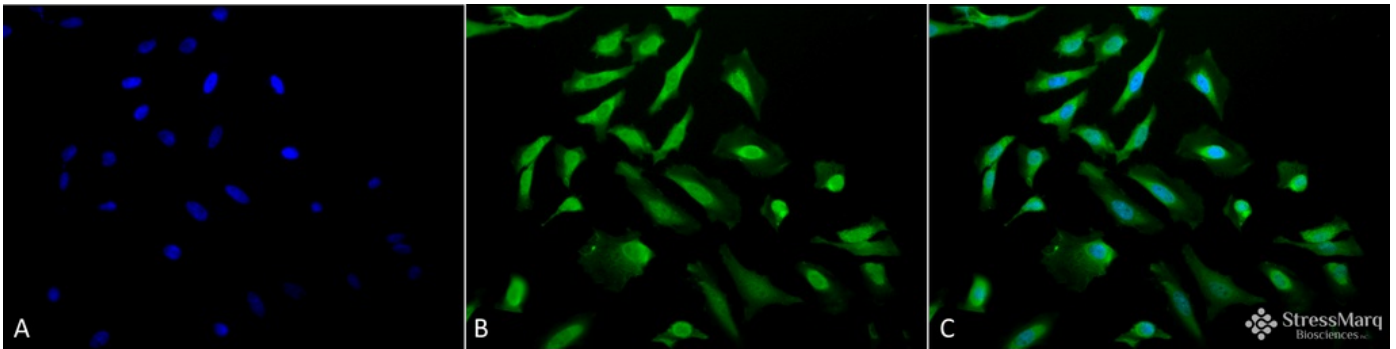
Product Images



Immunocytochemistry/Immunofluorescence analysis using Rabbit Anti-CDC37 Polyclonal Antibody (SPC-142). Tissue: Heat Shocked HeLa Cells. Species: Human. Fixation: 2% Formaldehyde for 20 min at RT. Primary Antibody: Rabbit Anti-CDC37 Polyclonal Antibody (SPC-142) at 1:200 for 12 hours at 4°C. Secondary Antibody: R-PE Goat Anti-Rabbit (yellow) at 1:200 for 2 hours at RT. Counterstain: DAPI (blue) nuclear stain at 1:40000 for 2 hours at RT. Localization: Cytoplasm. Magnification: 100x. (A) DAPI (blue) nuclear stain. (B) Anti-CDC37 Antibody. (C) Composite. Heat Shocked at 42°C for 30 min.



Western blot analysis of Human HeLa cell lysates showing detection of CDC37 protein using Rabbit Anti-CDC37 Polyclonal Antibody (SPC-142). Primary Antibody: Rabbit Anti-CDC37 Polyclonal Antibody (SPC-142) at 1:2000.



Immunocytochemistry/Immunofluorescence analysis using Rabbit Anti-CDC37 Polyclonal Antibody (SPC-142). Tissue: Heat Shocked HeLa Cells. Species: Human. Fixation: 2% Formaldehyde for 20 min at RT. Primary Antibody: Rabbit Anti-CDC37 Polyclonal Antibody (SPC-142) at 1:200 for 12 hours at 4°C. Secondary Antibody: FITC Goat Anti-Rabbit (green) at 1:200 for 2 hours at RT. Counterstain: DAPI (blue) nuclear stain at 1:40000 for 2 hours at RT. Localization: Cytoplasm. Magnification: 20x. (A) DAPI (blue) nuclear stain. (B) Anti-CDC37 Antibody. (C) Composite. Heat Shocked at 42°C for 30 min.

Product Citations (0)

Currently there are no citations for this product.

Reviews

There are no reviews yet.